

Product datasheet for RC203552

KLHDC3 (NM_057161) Human Tagged ORF Clone

Product data:

Product Type:	Expression Plasmids
Product Name:	KLHDC3 (NM_057161) Human Tagged ORF Clone
Tag:	Myc-DDK
Symbol:	KLHDC3
Synonyms:	dj20C7.3; PEAS
Vector:	pCMV6-Entry (PS100001)
E. coli Selection:	Kanamycin (25 ug/mL)
Cell Selection:	Neomycin
ORF Nucleotide Sequence:	>RC203552 ORF sequence Red=Cloning site Blue=ORF Green=Tags(s)

TTTTGTAATACGACTCACTATAGGGCGGCCGGAATTCGTCGACTGGATCCGGTACCGAGGAGATCTGCC
GCCGCGATCGCC

ATGTTACGGTGGACAGTGCACCTGGAGGGCGGCCCGCAGGGTGAACCATGCTGCAGTGGCTGTCGGGC
ATCGGGTATACTCCTTCGGGGTACTGCTCTGGTGAAGACTATGAGACTGCGTCAGATAGATGTGCA
CATTTTCAATGCAGTGTCTTGGCTTGGACAAAGCTGCCCGGTGAAGTCTGCCATCCGTGGGCAAGCT
CCTGTGGTACCCTACATGCGCTATGGACTCAACCGTCCTCATCGACGACACAGTCTCCTTTGGGGCG
GGCGGAATGACACCGAAGGGGCTGCAATGTGCTCTATGCCTTTGACGTAATACGCACAAGTGGTTCAC
ACCCCGAGTGTACGGGACAGTTCCTGGGGCCGGGATGGACATTCAGCCTGTGCTCCTAGGCAAGATCATG
TACATTTTGGGGGTACGAGCAGCAGGCGGACTGTTTTTCCAATGACATTCACAAGCTAGATACCAGCA
CCATGACATGGACTCTTATCTGTACAAAGGGCAGCCCTGCACGCTGGAGGGACTTCCACTCAGCCACAAT
GCTGGGAAGTACATGTATGTCTTTGGGGCCGTGCCGACCGCTTTGGGCCATTCATTCACAACAATGAG
ATTTACTGCAACCGCATTCGAGTCTTTGACACCAGAAGTGGCTGGACTGTCCCGGACTCCAG
TGCTGCCGAGGGGCGCCGGAGCCACTCGGCCTTTGGCTACAATGGGGAGCTGTACATCTTTGGTGGTTA
TAATGCAAGGCTGAACCGCACTTCCATGACCTCTGGAAGTTAATCCTGTGCTCTTACCTGGAAAAAG
ATTGAACCGAAGGGGAAGGGCCATGTCCCGCCGGCGCCAGTGTGCTGTATTGTTGGTGACAAGATTG
TCCTCTTTGGGGTACCAGTCCATCTCCTGAGGAAGCCCTGGGAGATGAATTTGACCTTATAGATCATT
TGACTTACACATTTGGACTTTAGCCCTAGTCTGAAGACTCTGTGCAACTGGCCGTGATTCAGTATAAC
CTAGACCAGTCTGTTGCCTCATGATATCAGGTGGGAGCTGAATGCCATGACCACCAACAGCAATATCA
GTCGCCCCATCGTCTCCTCCATGGG

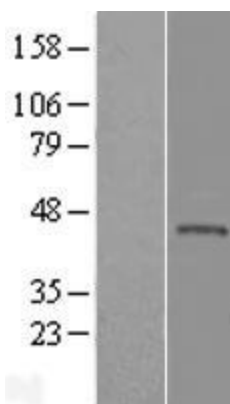
ACGCGTACGCGGCCGCTCGAGCAGAAACTCATCTCAGAAGAGGATCTGGCAGCAAATGATATCCTGGATT
ACAAGGATGACGACGATAAGTTTAA



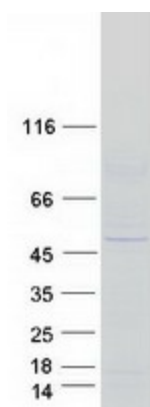
[View online »](#)

ACCN:	NM_057161
ORF Size:	1146 bp
OTI Disclaimer:	The molecular sequence of this clone aligns with the gene accession number as a point of reference only. However, individual transcript sequences of the same gene can differ through naturally occurring variations (e.g. polymorphisms), each with its own valid existence. This clone is substantially in agreement with the reference, but a complete review of all prevailing variants is recommended prior to use. More info
OTI Annotation:	This clone was engineered to express the complete ORF with an expression tag. Expression varies depending on the nature of the gene.
RefSeq:	NM_057161.4
RefSeq Size:	2029 bp
RefSeq ORF:	1149 bp
Locus ID:	116138
UniProt ID:	Q9BQ90
Domains:	Kelch
MW:	43.1 kDa
Gene Summary:	The protein encoded by this gene contains six repeated kelch motifs that are structurally similar to recombination activating gene 2, a protein involved in the activation of the V(D)J recombination. In mouse, this gene is found to be expressed specifically in testis. Its expression in pachytene spermatocytes is localized to cytoplasm and meiotic chromatin, suggesting that this gene may be involved in meiotic recombination. [provided by RefSeq, Jun 2012]

Product images:



Western blot validation of overexpression lysate (Cat# [LY409263]) using anti-DDK antibody (Cat# [TA50011-100]). Left: Cell lysates from untransfected HEK293T cells; Right: Cell lysates from HEK293T cells transfected with RC203552 using transfection reagent MegaTran 2.0 (Cat# [TT210002]).



Coomassie blue staining of purified KLHDC3 protein (Cat# [TP303552]). The protein was produced from HEK293T cells transfected with KLHDC3 cDNA clone (Cat# RC203552) using MegaTran 2.0 (Cat# [TT210002]).