

Product datasheet for **RC203551**

HLX1 (HLX) (NM_021958) Human Tagged ORF Clone

Product data:

Product Type:	Expression Plasmids
Product Name:	HLX1 (HLX) (NM_021958) Human Tagged ORF Clone
Tag:	Myc-DDK
Symbol:	HLX1
Synonyms:	HB24; HLX1
Mammalian Cell Selection:	Neomycin
Vector:	pCMV6-Entry (PS100001)
E. coli Selection:	Kanamycin (25 ug/mL)



[View online »](#)

ORF Nucleotide Sequence:

>RC203551 ORF sequence
 Red=Cloning site Blue=ORF Green=Tags(s)

TTTTGTAATACGACTCACTATAGGGCGGCCGGGAATTCGTCGACTGGATCCGGTACCGAGGAGATCTGCC
 GCC**CGATCGCC**

ATGTTTCGACGCCGGGCTGGCTCCCTTCTACGCCTCCAACCTCAGCCTCTGGTCGGCCGCTTACTGCTCCT
 CGGCCGGCCAGGCGGCTGCTCCTTCCCCTTGGACCCCGCCGCTCAAAAAGCCCTCCTTCTGCATCGC
 AGACATTTCTGCACGCGCGTGGGGATCTGGGGCGGCCCGGAGGGCCTGGCAGGGCCCTCGGCCGCC
 GCCCTCACCGCCTTGGGCTCGGTTACCCGCACGCCTCTTCCAAGCGGCGGCCAGATCCCCGCTTC
 GACCCACCCAGTGGTGGCGCCCTCCGAAGTCCCAGGCTGGCTTCCCGCAGCGGCTGTCTCCGCTCTCAGC
 CGCCTACCACCACATCACCCGCAACAACAACAGCAGCAGCAACAGCCGAGCAGCAACAGCCTCCGCT
 CCGCCCGGGCTGGCGCCTGCAGCCCCGGCCTCGGGACGCGAGTGGTCCGAACCCACCACAGT
 GCTCTGCCCGGCCCTCCAGCAAAGACTCAAATTTGGAATTGACCGATTTTATCTGCAGAATTGA
 CCCAAAAGTCAAAGAAGCAACAGCTGAGAGATCTCACTCCCTGCTAACCGGTGGGCGGCCCGCCGGG
 GTGCACCTCTCAGGCCTGCAGCCCTCGGCCGGCAGTTCTTCGATCTCTAGATCCCATTAACGAGGCTT
 CTGCAATCCTGAGTCCCTTAAACTCGAACCCAAGAAATTCAGTTCAGCATCAGTTCGAAGACACGTTTCC
 AGGTCCCTATGCTGTGCTCACGAAGACACCATGCCGAGACGTACAAAAGGAAGCGTTCATGGTCGCGC
 GCTGTGTTCTCCAACCTGCAGAGGAAAGCCCTGGAGAAAAGTTTGGATTTCAGAAAGTACGTGACCAAGC
 CGGACCGAAAGCAGTGGCGCGGATGCTGGGCCTCACGGACGCACAGGTGAAGGTGTGGTCCAGAACC
 GCGGATGAAGTGGCGGCACTCCAAGGAGGCCAGGCCAAAAGGACAAGGACAAGGAGGCTGGCGAGAAG
 CCATCAGGTGGAGCCCCGGCTGCGGATGGCGAGCAGGACGAGAGGAGCCCGAGCCGTTCTGAAGGCGAGG
 CTGAGAGCGAGAGCAGCAGCTCCGAGTCCCTGGACATGGCCCCAGCGACAGGAGCGGAGTGGGGGAG
 TGAGCGTTCTCTGACCAAAACAACAGTTATTAAGGCCCGGTCACTGGCGCCCTCATTACCGCAGCAGT
 GCTGGGAGTGGTGGGAGCAGCGCGCGCGGCAATAGTTTCAGCTTCAGCAGCGCCAGCAGTCTTAGTA
 GCAGCAGCAGCAGTGGGGTTGCGCCAGCAGCCTTGGCGCGCGCGCCCTCGGAGCTTCTCCCTGCAAC
 ACAGCCACAGCCAGCAGCGCTCCAAAAGCCCGAGCCAGCCAAAGGCGCGTTGGCTGCTTA

ACGCGTACGCGGCCGCTCGAGCAGAAACTCATCTCAGAAGAGGATCTGGCAGCAAATGATATCTGGATT
 ACAAGGATGACGACGATAAGGTTTAA

Protein Sequence:

>RC203551 protein sequence
 Red=Cloning site Green=Tags(s)

MFAAGLAPFYASNFSLWSAAYCSSAGPGGCSFPLDPAAVKKPSFCIADILHAGVGDLAGAPEGLAGASAA
 ALTAHLGSVPHASFQAAARSPLRPTPVVAPSEVPAGFPQRLSPLSAAYHHHPQQQQQQPQQQPPPP
 PPRAGALQPPASGTRVVPNPHSGSAPAPSSKDLKFGIDRILSAEFDPKVKEGNTLRDLTSLLTGGRPAG
 VHLSGLQPSAGQFFASLDPINEASAILSPLNSNPRNSVQHQQDTPPGPYAVLTKDTPQTYKRKRSWSR
 AVFSLNQRKLEKRFIEIQYVTKPDRKQLAAMLGLTDAQVKVWFQNRMKWRHSKEAQAQKDKDKEAGEK
 PSGGAPAADGEQDERSPSRSEGEAESESSDSESLDMAPSDTERTEGSESLHQTTVIKAPVTGALITASS
 AGSGGSSGGGNSFSFSSASSLSSSSTSAGCASSLGGGASELLPATQPTASSAPKSPEPAQGALGCL

TRTRPLEQKLISEEDLAANDILDYKDDDDKV

Chromatograms:

https://cdn.origene.com/chromatograms/mk6152_d11.zip

Restriction Sites:

Sgfl-Mlul

Cloning Scheme:

Cloning sites used for ORF Shutting:



* The last codon before the Stop codon of the ORF

ACCN: NM_021958

ORF Size: 1464 bp

OTI Disclaimer: The molecular sequence of this clone aligns with the gene accession number as a point of reference only. However, individual transcript sequences of the same gene can differ through naturally occurring variations (e.g. polymorphisms), each with its own valid existence. This clone is substantially in agreement with the reference, but a complete review of all prevailing variants is recommended prior to use. [More info](#)

OTI Annotation: This clone was engineered to express the complete ORF with an expression tag. Expression varies depending on the nature of the gene.

Components: The ORF clone is ion-exchange column purified and shipped in a 2D barcoded Matrix tube containing 10ug of transfection-ready, dried plasmid DNA (reconstitute with 100 ul of water).

Reconstitution Method:

1. Centrifuge at 5,000xg for 5min.
2. Carefully open the tube and add 100ul of sterile water to dissolve the DNA.
3. Close the tube and incubate for 10 minutes at room temperature.
4. Briefly vortex the tube and then do a quick spin (less than 5000xg) to concentrate the liquid at the bottom.
5. Store the suspended plasmid at -20°C. The DNA is stable for at least one year from date of shipping when stored at -20°C.

RefSeq: [NM_021958.4](#)
RefSeq Size: 2308 bp

RefSeq ORF: 1467 bp

Locus ID: 3142

UniProt ID: [Q14774](#)
Cytogenetics: 1q41

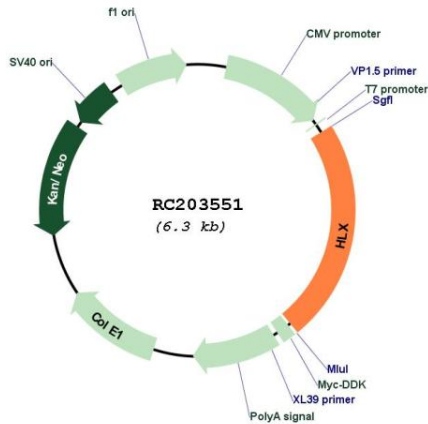
Domains: homeobox

Protein Families: Transcription Factors

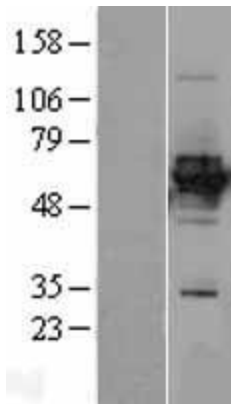
MW: 50.8 kDa

Gene Summary: Transcription factor required for TBX21/T-bet-dependent maturation of Th1 cells as well as maintenance of Th1-specific gene expression. Involved in embryogenesis and hematopoiesis (By similarity).[UniProtKB/Swiss-Prot Function]

Product images:



Circular map for RC203551



Western blot validation of overexpression lysate (Cat# [LY402891]) using anti-DDK antibody (Cat# [TA50011-100]). Left: Cell lysates from untransfected HEK293T cells; Right: Cell lysates from HEK293T cells transfected with RC203551 using transfection reagent MegaTran 2.0 (Cat# [TT210002]).