

Product datasheet for RC203550L3

HPDL (NM_032756) Human Tagged Lenti ORF Clone

Product data:

Product Type:	Expression Plasmids
Product Name:	HPDL (NM_032756) Human Tagged Lenti ORF Clone
Tag:	Myc-DDK
Symbol:	HPDL
Synonyms:	4-HPPD-L; GLOXD1
Mammalian Cell Selection:	Puromycin
Vector:	pLenti-C-Myc-DDK-P2A-Puro (PS100092)
E. coli Selection:	Chloramphenicol (34 ug/mL)
ORF Nucleotide Sequence:	The ORF insert of this clone is exactly the same as(RC203550).
Restriction Sites:	SgfI-MluI
Cloning Scheme:	

Cloning sites used for ORF Shuttling:



* The last codon before the Stop codon of the ORF.

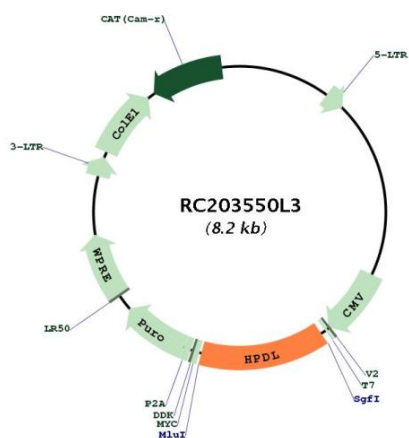
ACCN:	NM_032756
ORF Size:	1113 bp



[View online »](#)

OTI Disclaimer:	The molecular sequence of this clone aligns with the gene accession number as a point of reference only. However, individual transcript sequences of the same gene can differ through naturally occurring variations (e.g. polymorphisms), each with its own valid existence. This clone is substantially in agreement with the reference, but a complete review of all prevailing variants is recommended prior to use. More info
OTI Annotation:	This clone was engineered to express the complete ORF with an expression tag. Expression varies depending on the nature of the gene.
Components:	The ORF clone is ion-exchange column purified and shipped in a 2D barcoded Matrix tube containing 10ug of transfection-ready, dried plasmid DNA (reconstitute with 100 ul of water).
Reconstitution Method:	<ol style="list-style-type: none">1. Centrifuge at 5,000xg for 5min.2. Carefully open the tube and add 100ul of sterile water to dissolve the DNA.3. Close the tube and incubate for 10 minutes at room temperature.4. Briefly vortex the tube and then do a quick spin (less than 5000xg) to concentrate the liquid at the bottom.5. Store the suspended plasmid at -20°C. The DNA is stable for at least one year from date of shipping when stored at -20°C.
RefSeq:	NM_032756.2
RefSeq Size:	1803 bp
RefSeq ORF:	1116 bp
Locus ID:	84842
UniProt ID:	Q96IR7
Cytogenetics:	1p34.1
MW:	39.4 kDa
Gene Summary:	The protein encoded by this intronless gene localizes to mitochondria, where it may function as 4-hydroxyphenylpyruvate dioxygenase. Clinical studies have identified several bi-allelic variants in this gene that lower the level of the encoded protein and lead to a clinically variable form of pediatric-onset spastic movement disorder. [provided by RefSeq, Aug 2020]

Product images:



Circular map for RC203550L3