

Product datasheet for RC203550

HPDL (NM_032756) Human Tagged ORF Clone

Product data:

Product Type:	Expression Plasmids
Product Name:	HPDL (NM_032756) Human Tagged ORF Clone
Tag:	Myc-DDK
Symbol:	HPDL
Synonyms:	4-HPPD-L; GLOXD1
Vector:	pCMV6-Entry (PS100001)
E. coli Selection:	Kanamycin (25 ug/mL)
Cell Selection:	Neomycin
ORF Nucleotide Sequence:	>RC203550 ORF sequence Red=Cloning site Blue=ORF Green=Tags(s)

TTTTGTAATACGACTCACTATAGGGCGCCGGAATTCGTCGACTGGATCCGGTACCGAGGAGATCTGCC
GCC**CGATCGCC**

ATGGCCGCGCCCGCCCTTCGTTTGCCACATCGCCTTCCACGTGCCCGCCGGCAGCCCTAGCCCGGA
ACCTGCAGCGCCTCTTCGGTTCAGCCCTGGCTTCGCGGGAGGTGGACGGCTGGCGGCAGCTAGCCCT
GCGCAGCGCGCAGCGGTCTTTTGGTGAACGAGGGCGCAGGGTCTGGAGAGCCGCTGTACGGCCTGGAT
CCGCGTCACGCCGTGCCAGCGCCACAACTGTGCTTCGACGTGGCGGACGCCGGCGCTGCAACCCGGG
AGCTGGCAGCGCTGGGTGCAGCGTGCCTGCCCTCCCGTTTCGCGTGGCGGACGCGCAGGGTCCCGCCAC
TTACGCCGTGGTCAGCTCGCCTGCCGCATCCTCAGCCTGACCTTGTGGAGCGCGCTGGTACCGCGGA
CCCTTCTACCCGGCTTCAGGCCGTGTCTCTGCGCCTGGCCCCGGGTGGGTGACGCCGCTGGACCACC
TGACCTTGGCCTGCACCCCGGCAGCTCCCCACACTTTTGCCTGGTTCCACGACTGCCTGGGCTTTTG
CCTTGGCCGTGAGCCAGGTGAGGATCCCGAGCTGGCCCTCGAAATGACAGCAGGGTTTGGGCTTGGG
GGACTGAGGCTTACAGCCCTGCAGGCCAGCCGGCAGCATTGTCCCACTCTTGTCTGGCTGAGTCCC
TTCCGGGGGCGACGACAGCAGGACAGGTGGAGCAGTTCTGGCCCGCACAAGGGCCAGGCTGCA
GCACGTGGGGCTGTATACGCTAACATTGTGGAGGCCACTGAGGGGGTGGCAACTGCTGGAGGCCAGTTC
CTGGCTCCCCCTGGGCATACTACCAGCAGCCAGGAAAGGAGAGGCAGATCCGAGCTGCAGGGCACGAGC
CTCATCTGCTTGCACAGGGATCCTGCTAGATGGTGATAAAGGCAAGTTTCTGCTTCAGGTCTTAC
CAAGTCCCTTTTACTGAGGACTTTCTTCTGGAGCTGATTACAGAGCCAGGGGCCACTGGCTTGGT
CAGGGCAACATCAGAGCTCTGTGGCAGTCCGTACAGGAGCAATCTGCCAGGAGCCAGGAAGCC

ACCGTACGCGGCCGCTCGAGCAGAACTCATCTCAGAAGAGGATCTGGCAGCAATGATATCTGGATT
ACAAGGATGACGACGATAAGGTTTAA



[View online »](#)

Protein Sequence: >RC203550 protein sequence
 Red=Cloning site Green=Tags(s)

MAAPALRLCHIAFHVPAGQPLARNLQRLFQPLASREVDGWRQLALRSGDAVFLVNEGAGSGEPLYGLD
 PRHAVPSATNLCFDVADAGAATRELAALGCSVPPVVRDAQGAATYAVVSSPAGILSLTLLERAGYRG
 PFLPGFRPVSSAPGPGWVSRVDHLTLACTPGSSPTLLRWFHDCLGFCHLPLSPGEDPELGLEMTAGFLG
 GLRLTALQAQPGSIVPTLVLAESLPGATTTRQDQVEQFLARHKGPGLQHVGLYTPNIVEATEGVATAGGQF
 LAPPGAYYQQPGKERQIRAAGHEPHLLARQGILLDGDGKGFLLQVFTKSLFTEDTFFLELIQRQGATGFG
 QGNIRALWQSVQEQSARSQEA

TRTRPLEQKLISEEDLAANDILDYKDDDDKV

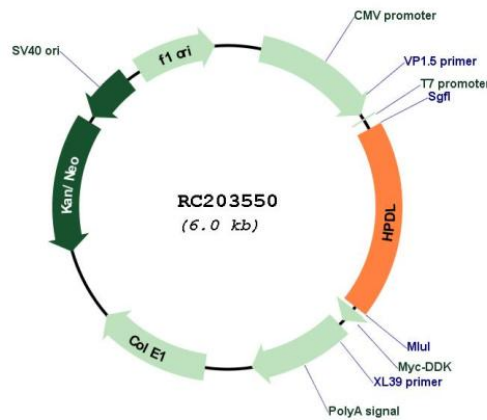
Chromatograms: https://cdn.origene.com/chromatograms/mk6078_d05.zip

Restriction Sites: SgfI-MluI

Cloning Scheme:

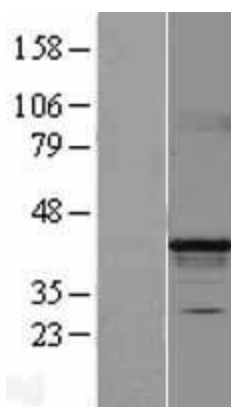


Plasmid Map:

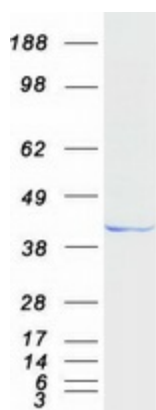


ACCN:	NM_032756
ORF Size:	1113 bp
OTI Disclaimer:	The molecular sequence of this clone aligns with the gene accession number as a point of reference only. However, individual transcript sequences of the same gene can differ through naturally occurring variations (e.g. polymorphisms), each with its own valid existence. This clone is substantially in agreement with the reference, but a complete review of all prevailing variants is recommended prior to use. More info
OTI Annotation:	This clone was engineered to express the complete ORF with an expression tag. Expression varies depending on the nature of the gene.
RefSeq:	NM_032756.3
RefSeq Size:	1803 bp
RefSeq ORF:	1116 bp
Locus ID:	84842
UniProt ID:	Q96IR7
MW:	39.4 kDa
Gene Summary:	The protein encoded by this intronless gene localizes to mitochondria, where it may function as 4-hydroxyphenylpyruvate dioxygenase. Clinical studies have identified several bi-allelic variants in this gene that lower the level of the encoded protein and lead to a clinically variable form of pediatric-onset spastic movement disorder. [provided by RefSeq, Aug 2020]

Product images:



Western blot validation of overexpression lysate (Cat# [LY403196]) using anti-DDK antibody (Cat# [TA50011-100]). Left: Cell lysates from untransfected HEK293T cells; Right: Cell lysates from HEK293T cells transfected with RC203550 using transfection reagent MegaTran 2.0 (Cat# [TT210002]).



Coomassie blue staining of purified HPDL protein (Cat# [TP303550]). The protein was produced from HEK293T cells transfected with HPDL cDNA clone (Cat# RC203550) using MegaTran 2.0 (Cat# [TT210002]).