

Product datasheet for **RC203545**

SOX10 (NM_006941) Human Tagged ORF Clone

Product data:

Product Type:	Expression Plasmids
Product Name:	SOX10 (NM_006941) Human Tagged ORF Clone
Tag:	Myc-DDK
Symbol:	SOX10
Synonyms:	DOM; PCWH; WS2E; WS4; WS4C
Vector:	pCMV6-Entry (PS100001)
E. coli Selection:	Kanamycin (25 ug/mL)
Cell Selection:	Neomycin



[View online »](#)

ORF Nucleotide
Sequence:

>RC203545 ORF sequence
Red=Cloning site Blue=ORF Green=Tags(s)

TTTTGTAATACGACTCACTATAGGGCGGCCGGGAATTCGTCGACTGGATCCGGTACCGAGGAGATCTGCC
GCCGCGATCGCC

ATGGCGGAGGAGCAGGACCTATCGGAGGTGGAGCTGAGCCCCGTGGGCTCGGAGGAGCCCCGCTGCCTGT
CCCCGGGAGCGGCCCTCGCTAGGGCCCGACGCGCGCGCGGGATCGGGCTGCGAGCCAGCCCGG
GCCAGGCGAGCTGGCAAGGTCAAGAAGGAGCAGCAGGACGCGGAGGCGGACGATGACAAGTTCCTCGT
TGCATCCGCGAGGCCGTAGCCAGGTGCTCAGCGGCTACGACTGGACGCTGGTGGCCATGCCCGTGC
TCAACGGCGCCAGCAAAAGCAAGCCGACGTCAAGCGGCCATGAACGCCTTCATGGTGTGGGCTCAGGC
AGCGCGCAGGAAGCTCGCGGACCAGTACCCGCACCTGCACAACGCTGAGCTCAGCAAGACGCTGGCAAG
CTCTGGAGGCTGTGAACGAAAGTGACAAGCGCCCTTCATCGAGGAGGCTGAGCGGCTCCGTATGCAGC
ACAAGAAAGACCACCCGACTACAAGTACCAGCCAGGCGCGGAAGAACGGGAAGGCCGCCAGGGCGA
GGCGGAGTGCCCGGTGGGAGGCGGAGCAAGGTGGGACCGCCCATCCAGGCCACTACAAGAGCGCC
CACTTGGACCACCGGCACCCAGGAGAGGGCTCCCCATGTCAGATGGTAACCCCGAGCACCCCTCAGGCC
AGAGCCATGGCCACCCACCCCTCCAACACCCCGAAGACAGAGCTGCAGTCGGGCAAGGAGACCCGAA
GCGGGACGGGCGCTCCATGGGGAGGGCGGGAAGCCTCACATCGACTTCGGCAACGTGGACATTGGT
ATCAGCCACGAGGTAATGTCCAACATGGAGACCTTTGATGTGGCTGAGTTGGACAGTACCTGCCGCCA
ATGGGCACCCAGGCCATGTGAGCAGCTACTCAGCAGCCGGCTATGGGCTGGGAGTGCCTGGCCGTGGC
CAGTGGACTCCGCCTGGATCTCCAAGCCACCAGGCGTGGCTCTGCCACGGTCTACCACCTGGTGTG
GATGCCAAAGCCAGGTGAAGACAGAGACCGCGGGGCCACAGGGGCCACACTACACCGACAGCCAT
CCACCTCACAGATCGCCTACACCTCCCTCAGCCTGCCCCACTATGGCTCAGCCTTCCCCTCCATCTCCCG
CCCCAGTTTACTACTCTGACCATCAGCCCTCAGGACCTATTATGGCCACTCGGGCCAGGCCTCTGGC
CTCTACTCGGCCCTCTCTATATGGGGCCCTCGCAGCGGCCCTCTACACGGCCATCTCTGACCCAGCC
CCTCAGGGCCCCAGTCCACAGCCACACACTGGGAGCAGCCAGTATATACGACTGTCCCGGCC

ACGCGTACGCGGCCGCTCGAGCAGAACTCATCTCAGAAGAGGATCTGGCAGCAAATGATATCTGGATT
ACAAGGATGACGACGATAAGGTTTAA

Protein Sequence:

>RC203545 protein sequence
Red=Cloning site Green=Tags(s)

MAEEQDLSEVELSPVGSEEPRLSPGSAPSLGPDGGGGSGLRASPGPGELGKVKKEQQDGEADDDKFPV
CIREAVSQVLSGYDWTLVPMVVRVNGASKSKPHVKRPMNFMVWAQAARRKLADQPHLHNAELSKTLGK
LWRLLESDBKRPFIEEAERLRMQHKDHPDYKYQPRRRKNGKAAQGEAECPPGGEAEQGGTAAIQAHYKSA
HLDHRHPGEGSPMSDGNPEHPSGQSHGPPTPTPKTELQSGKADPKRDGRSMGEGGKPHIDFGNVDIGE
ISHEVMSNMETFDAELDQYLPNGHPGHVSSYAAGYGLGSALAVASGHSAWISKPPGVALPTVSPPGV
DAKAQVKTETAGPQPPHYTDQPSTSQIAYTSLSLPHYGSAFPISIRPQFDYSDHQPSGPPYGHSGQASG
LYSAFSYMGPSQRPLYTAISDPSPSGPQSHSPHWEPVYTTLSRP

TRTRPLEQKLISEEDLAANDILDYKDDDDKV

Chromatograms:

https://cdn.origene.com/chromatograms/mk6078_c11.zip

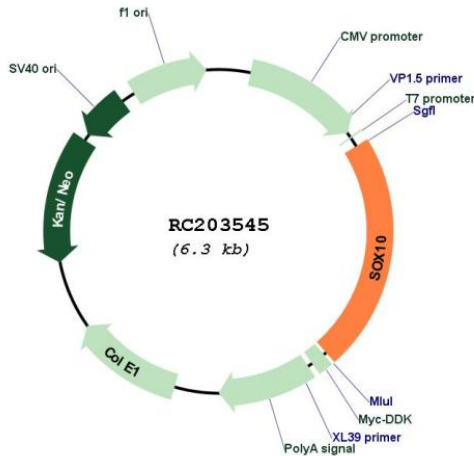
Restriction Sites:

Sgfl-MluI

Cloning Scheme:



Plasmid Map:



ACCN: NM_006941

ORF Size: 1398 bp

OTI Disclaimer: The molecular sequence of this clone aligns with the gene accession number as a point of reference only. However, individual transcript sequences of the same gene can differ through naturally occurring variations (e.g. polymorphisms), each with its own valid existence. This clone is substantially in agreement with the reference, but a complete review of all prevailing variants is recommended prior to use. [More info](#)

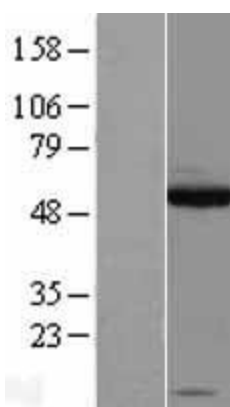
OTI Annotation: This clone was engineered to express the complete ORF with an expression tag. Expression varies depending on the nature of the gene.

RefSeq: [NM_006941.2](#)

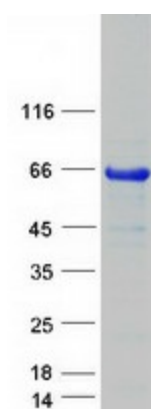
RefSeq Size: 2882 bp

RefSeq ORF:	1401 bp
Locus ID:	6663
UniProt ID:	P56693 , A0A024R1N6
Protein Families:	Adult stem cells, ES Cell Differentiation/IPS, Induced pluripotent stem cells, Transcription Factors
MW:	49.9 kDa
Gene Summary:	This gene encodes a member of the SOX (SRY-related HMG-box) family of transcription factors involved in the regulation of embryonic development and in the determination of the cell fate. The encoded protein may act as a transcriptional activator after forming a protein complex with other proteins. This protein acts as a nucleocytoplasmic shuttle protein and is important for neural crest and peripheral nervous system development. Mutations in this gene are associated with Waardenburg-Shah and Waardenburg-Hirschsprung disease. [provided by RefSeq, Jul 2008]

Product images:



Western blot validation of overexpression lysate (Cat# [LY402065]) using anti-DDK antibody (Cat# [TA50011-100]). Left: Cell lysates from untransfected HEK293T cells; Right: Cell lysates from HEK293T cells transfected with RC203545 using transfection reagent MegaTran 2.0 (Cat# [TT210002]).



Coomassie blue staining of purified SOX10 protein (Cat# [TP303545]). The protein was produced from HEK293T cells transfected with SOX10 cDNA clone (Cat# RC203545) using MegaTran 2.0 (Cat# [TT210002]).