

Product datasheet for **RC203544**

VASP (NM_003370) Human Tagged ORF Clone

Product data:

Product Type:	Expression Plasmids
Product Name:	VASP (NM_003370) Human Tagged ORF Clone
Tag:	Myc-DDK
Symbol:	VASP
Mammalian Cell Selection:	Neomycin
Vector:	pCMV6-Entry (PS100001)
E. coli Selection:	Kanamycin (25 ug/mL)
ORF Nucleotide Sequence:	>RC203544 representing NM_003370 Red=Cloning site Blue=ORF Green=Tags(s)

TTTTGTAATACGACTCACTATAGGGCGGCCGGAATTCGTCGACTGGATCCGGTACCGAGGAGATCTGCC
GCC**CGATCGCC**

ATGAGCAGCGAGACGGTCATCTGTTCCAGCCGGGCCACTGTGATGCTTTATGATGATGGCAACAAGCGAT
GGCTCCCTGCTGGCACGGGTCCCCAGGCCCTTACGCCGCTCCAGATCTACCACAACCCACGGCCAAATTC
CTTTCGCGTCGTGGGCCGAAGATGCAGCCCGACCAGCAGGTGGTCATCAACTGTGCCATCGTCCGGGT
GTCAAGTATAACCAGGCCACCCCAACTTCCATCAGTGGCGGACGCTCGCCAGGTCTGGGGCTCAACT
TCGGCAGCAAGGAGGATGCGGCCAGTTTGCCGCCGCATGGCCAGTCCCTAGAGCGGTTGGAAGGAGG
TGGCCCCCTCCACCCAGCACTTCCACCTGGTCGGTCCCGAACGGCCCTCCCCGGAGGAGGTGGAG
CAGCAGAAAAGGCAGCAGCCCGCCGTCGGAGACATAGAGCGCCGGTCTCCAATGCAGGAGGCCAC
CTGCTCCCCCGCTGGGGTCCACCCACCAGGACCTCCCCTCCTCCAGTCCCCCCCCACCC
AGGTTTGGCCCTTCGGGGTCCAGCTGCAGCGCACGGAGCAGGGGAGGACCACCCCTGCACCCCT
CTCCCGCAGCACAGGGCCCTGGTGGTGGGGAGCTGGGGCCCGAGCCTGGCCGAGCTATTGCTGGAG
CCAACTCAGGAAAGTCAGCAAGGAGGAGCCTCAGGGGGCCACAGCCCCAAAGCTGAGAGTGGTGC
AAGCGGAGGTGGGGACTCATGGAAGAGATGAACGCCATGCTGGCCGGAGAAGGAAAGCCACGCAAGTT
GGGAGAAAACCCCAAGGATGAATCTGCCAATCAGGAGGAGCCAGAGGCCAGAGTCCCGCCAGAGTG
AATCTGTGCGGAGACCCTGGGAGAAGAACAGCACACCTTGCCAAGGATGAAGTCGCTTCTTCGGTGAC
CACTTCCGAGACCAACCTGCACGCCAGCTCCAGTGATTACTCGGACCTACAGAGGGTAAACAGGAG
CTTCTGGAAGAGGTGAAGAAGGAATTGCAGAAAGTGAAGAGGAAATCATTGAAGCCTTCGTCCAGGAGC
TGAGGAAGCGGGTTCTCCC

ACGCGTACGCGGCCGCTCGAGCAGAACTCATCTCAGAAGAGGATCTGGCAGCAATGATATCCTGGATT
ACAAGGATGACGACGATAAGGTTTAA



[View online »](#)

Protein Sequence: >RC203544 representing NM_003370
Red=Cloning site Green=Tags(s)

MSSETVICSSRATVMLYDDGNKRWLPAGTGPQAFSRVQIYHNPTANSFRVVGRKMOPDQQVVINCAIVRG
 VKYNQATPNFHQWRDARQVWGLNFGSKEDAAQFAAGMASALEALEGGPPPPALPTWSVPNGPSPEEVE
 QQKRQQPGPSEHIERRVSNAGPPAPPAGGPPPPPPGPPPPPPGLPPSGVAAAAGAGGGPPPPAPP
 LPAAQGGGGGAGAPGLAAAIAGAKLRKVSKEEASGGPTAPKAESGRSGGGGLMEEMNAMLARRRKATQV
 GEKTPKDESANQEPEARVPAQSESVRRPWEKNSTTLPRMKSSSSVTTSETQPCTPSSSDYSDLQRVKQE
 LLEEVKKELQKVKEEIEAFVQELRKRKRGSP

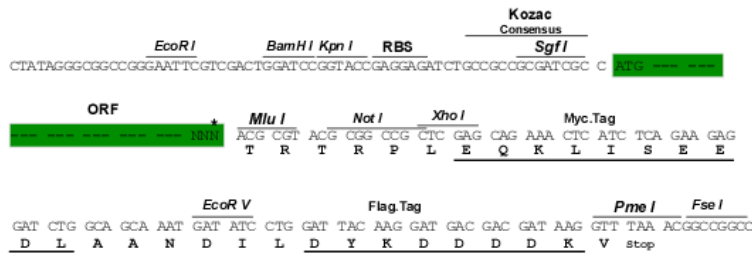
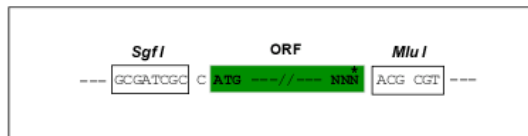
TRTRPLEQKLISEEDLAANDILDYKDDDDKV

Chromatograms: https://cdn.origene.com/chromatograms/mg3630_e02.zip

Restriction Sites: SgfI-MluI

Cloning Scheme:

Cloning sites used for ORF Shuttling:



* The last codon before the Stop codon of the ORF

ACCN: NM_003370

ORF Size: 1140 bp

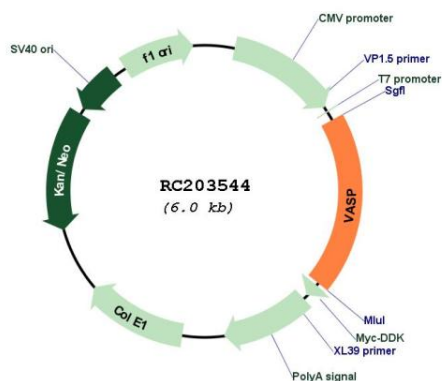
OTI Disclaimer: The molecular sequence of this clone aligns with the gene accession number as a point of reference only. However, individual transcript sequences of the same gene can differ through naturally occurring variations (e.g. polymorphisms), each with its own valid existence. This clone is substantially in agreement with the reference, but a complete review of all prevailing variants is recommended prior to use. [More info](#)

OTI Annotation: This clone was engineered to express the complete ORF with an expression tag. Expression varies depending on the nature of the gene.

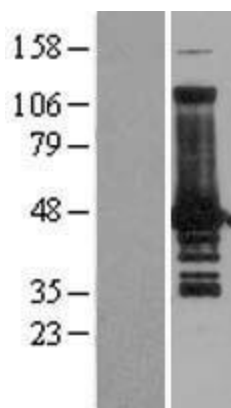
Components: The ORF clone is ion-exchange column purified and shipped in a 2D barcoded Matrix tube containing 10ug of transfection-ready, dried plasmid DNA (reconstitute with 100 ul of water).

Reconstitution Method:	<ol style="list-style-type: none">1. Centrifuge at 5,000xg for 5min.2. Carefully open the tube and add 100ul of sterile water to dissolve the DNA.3. Close the tube and incubate for 10 minutes at room temperature.4. Briefly vortex the tube and then do a quick spin (less than 5000xg) to concentrate the liquid at the bottom.5. Store the suspended plasmid at -20°C. The DNA is stable for at least one year from date of shipping when stored at -20°C.
Note:	Plasmids are not sterile. For experiments where strict sterility is required, filtration with 0.22um filter is required.
RefSeq:	NM_003370.4
RefSeq Size:	2298 bp
RefSeq ORF:	1143 bp
Locus ID:	7408
UniProt ID:	P50552
Cytogenetics:	19q13.32
Protein Families:	Druggable Genome, Stem cell - Pluripotency
Protein Pathways:	Fc gamma R-mediated phagocytosis, Focal adhesion, Leukocyte transendothelial migration
MW:	40.3 kDa
Gene Summary:	Vasodilator-stimulated phosphoprotein (VASP) is a member of the Ena-VASP protein family. Ena-VASP family members contain an EHV1 N-terminal domain that binds proteins containing E/DFPPPPXD/E motifs and targets Ena-VASP proteins to focal adhesions. In the mid-region of the protein, family members have a proline-rich domain that binds SH3 and WW domain-containing proteins. Their C-terminal EVH2 domain mediates tetramerization and binds both G and F actin. VASP is associated with filamentous actin formation and likely plays a widespread role in cell adhesion and motility. VASP may also be involved in the intracellular signaling pathways that regulate integrin-extracellular matrix interactions. VASP is regulated by the cyclic nucleotide-dependent kinases PKA and PKG. [provided by RefSeq, Jul 2008]

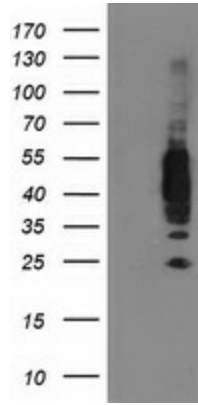
Product images:



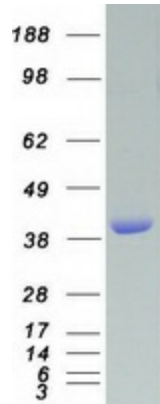
Circular map for RC203544



Western validation with an anti-DDK antibody; L: Control HEK293 lysate R: Over-expression lysate



HEK293T cells were transfected with the pCMV6-ENTRY control (Cat# [PS100001], Left lane) or pCMV6-ENTRY VASP (Cat# RC203544, Right lane) cDNA for 48 hrs and lysed. Equivalent amounts of cell lysates (5 ug per lane) were separated by SDS-PAGE and immunoblotted with anti-VASP (Cat# [TA502647]). Positive lysates [LY401150] (100ug) and [LC401150] (20ug) can be purchased separately from OriGene.



Coomassie blue staining of purified VASP protein (Cat# [TP303544]). The protein was produced from HEK293T cells transfected with VASP cDNA clone (Cat# RC203544) using MegaTran 2.0 (Cat# [TT210002]).