

Product datasheet for RC203543

NUDC (NM_006600) Human Tagged ORF Clone

Product data:

Product Type:	Expression Plasmids
Product Name:	NUDC (NM_006600) Human Tagged ORF Clone
Tag:	Myc-DDK
Symbol:	NUDC
Synonyms:	HNUDC; MNUDC; NPD011
Mammalian Cell Selection:	Neomycin
Vector:	pCMV6-Entry (PS100001)
E. coli Selection:	Kanamycin (25 ug/mL)
ORF Nucleotide Sequence:	>RC203543 ORF sequence Red=Cloning site Blue=ORF Green=Tags(s)

TTTTGTAATACGACTCACTATAGGGCGCCGGGAATTCGTCGACTGGATCCGGTACCGAGGAGATCTGCC
GCC**CGATCGCC**

ATGGGCGGAGAGCAGGAGGAGGAGCGGTTTCGACGGCATGTTGCTGGCCATGGCTCAGCAGCACGAGGGCG
GCGTGCAGGAGCTTGTGAACACCTTCTTCAGCTTCCTTCGACGCAAAACAGACTTTTTTCATTGGAGGAGA
AGAAGGGATGGCAGAGAAGCTTATCACACAGACTTTCAGCCACCACAATCAGCTGGCACAGAAGACCCGG
CGGGAGAAGAGAGCCCGCAGGAGGCCGAGCGGGGAGAAGCGGAGCGGGCGCCAGACTGGCCAAGG
AAGCCAAGTCAGAGACCTCAGGGCCCCAGATCAAGGAGCTAACTGATGAAGAGGCAGAGAGGCTGCAGCT
AGAGATTGACCAGAAAAAGGATGCAGAGAATCATGAGGCCAGCTCAAGAACGGCAGCCTTGACTCCCCA
GGGAAGCAGGATACTGAGGAAGATGAGGAGGAAGATGAGAAGGACAAAGGAAAATGAAGCCCAACCTAG
GCAACGGGGCAGACCTGCCCAATTACCGCTGGACCCAGACCTGTCCGAGCTGGACCTGGCGGTCCCTTT
CTGTGTGAACCTCCGGCTGAAAGGGAAGGACATGGTGGTGGACATCCAGCGGGCGGCACCTCCGGGTGGG
CTCAAGGGGCAGCCAGCGATCATTGATGGGGAGCTCTACAATGAAGTGAAGGTGGAGGAGAGCTCGTGCC
TCATTGAGGACGGCAAGGTGGTACTGTGCATCTGGAGAAGATCAATAAGATGGAGTGGTGGAGCCGCTT
GGTGTCCAGTGACCCTGAGATCAACACCAAGAAGATTAACCTGAGAATCCAAGCTGTCAGACCTGGAC
AGTGAGACTCGCAGCATGGTGGAAAAGATGATGTATGACCAGCGACAGAAGTCCATGGGGCTGCCAACTT
CAGACGAACAGAAGAAACAGGAGATTCTGAAGAAGTTTCATGGATCAACATCCGGAGATGGATTTTTCCAA
GGCTAAATTCAAC

ACGCGTACGCGGCCGCTCGAGCAGAAACTCATCTCAGAAGAGGATCTGGCAGCAATGATATCCTGGATT
ACAAGGATGACGACGATAAGGTTTAA



[View online »](#)

Reconstitution Method:

1. Centrifuge at 5,000xg for 5min.
2. Carefully open the tube and add 100ul of sterile water to dissolve the DNA.
3. Close the tube and incubate for 10 minutes at room temperature.
4. Briefly vortex the tube and then do a quick spin (less than 5000xg) to concentrate the liquid at the bottom.
5. Store the suspended plasmid at -20°C. The DNA is stable for at least one year from date of shipping when stored at -20°C.

RefSeq: [NM_006600.4](#)

RefSeq Size: 1813 bp

RefSeq ORF: 996 bp

Locus ID: 10726

UniProt ID: [Q9Y266](#)

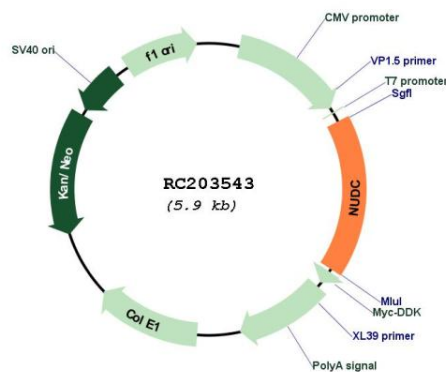
Cytogenetics: 1p36.11

Domains: Nuclear_move

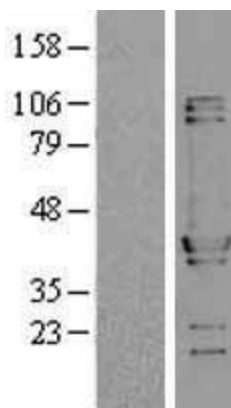
MW: 38.2 kDa

Gene Summary: This gene encodes a nuclear distribution protein that plays an essential role in mitosis and cytokinesis. The encoded protein is involved in spindle formation during mitosis and in microtubule organization during cytokinesis. Pseudogenes of this gene are found on chromosome 2. [provided by RefSeq, Feb 2012]

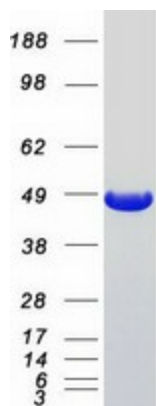
Product images:



Circular map for RC203543



Western blot validation of overexpression lysate (Cat# [LY401974]) using anti-DDK antibody (Cat# [TA50011-100]). Left: Cell lysates from untransfected HEK293T cells; Right: Cell lysates from HEK293T cells transfected with RC203543 using transfection reagent MegaTran 2.0 (Cat# [TT210002]).



Coomassie blue staining of purified NUDC protein (Cat# [TP303543]). The protein was produced from HEK293T cells transfected with NUDC cDNA clone (Cat# RC203543) using MegaTran 2.0 (Cat# [TT210002]).