

Product datasheet for **RC203538**

RPP25 (NM_017793) Human Tagged ORF Clone

Product data:

Product Type: Expression Plasmids
Product Name: RPP25 (NM_017793) Human Tagged ORF Clone
Tag: Myc-DDK
Symbol: RPP25
Mammalian Cell Selection: Neomycin
Vector: pCMV6-Entry (PS100001)
E. coli Selection: Kanamycin (25 ug/mL)
ORF Nucleotide Sequence: >RC203538 ORF sequence
 Red=Cloning site Blue=ORF Green=Tags(s)

CTATAGGGCGGCCGGAATTCGTCTGACTGGATCCGGTACCGAGGAGATCTGCCGCCGCGATCGCCGGCCG
GCC

ATGGAGAACTTCCGTAAGGTGCGCTCCGAAGAGGCGCCAGCGGGGTGCGGGGCCAGGGAGGCGGCCCGG
GCTCCGGCCCTTCGCAGACCTGGCGCCGGCGCGGTGCACATGCGGGTCAAGGAAGGCAGCAAGATCCG
GAACCTGATGGCCTTCGCCACCGCCAGCATGGCGCAGCCAGCCACGCGGCCATCGTCTTCAGCGGCTGC
GGCCGGGCCACCACAAAACCGTCACGTGCGCCGAGATCCTCAAGCGCCGCTGGCGGCCGCACCGGTC
TCACGCGGCTGCGCTACCGGAGCGTACGGAGGTGTGGCAGAGCCTCCCGCTGGGCCACGAGGGTCA
GACGCCTGGCGAGCCGGCCGCTAGTCTCAGCGTACTTAAGAACGTGCCCGCCTCGCCATCCTACTTTCC
AAGGACGCGTGGATCCGCGACAGCCCGCTACCAGCCCCGAATCCCCATCCTGGTCCCTCGTCCCGC
CAGCCGCGCCAGCGTCCAAGAGGAGCCTAGGGAAACCGCAGCTGGAGAAGGCTCCGCGAAGCGATCGCA
ACCCGAGCCAGGGTTGCGGACGAGGATCAGACGGCC

ACGCGTACGCGGCCGCTCGAGCAGAACTCATCTCAGAAGAGGATCTGGCAGCAATGATATCCTGGATT
ACAAGGATGACGACGATAAGGTTTAA

Protein Sequence: >RC203538 protein sequence
 Red=Cloning site Green=Tags(s)

MENFRKVRSEEAPAGCGAEGGGPGSGPFADLAPGAVHMRVKEGSKIRNLMAFATASMAQPATRAIVFSGC
GRATTKVTCAEILKRRLAGLHQVTRLRYRSVREVWQSLPPGPTQGQTPGEPAAASLVLKNVPGLAILLS
KDALDPRQPGYQPPNPHPGPSSPPAAPASKRSLGEPAAAGEGSAKRSQPEPGVADEDQTA

TRTRPLEQKLISEEDLAANDILDYKDDDDKV

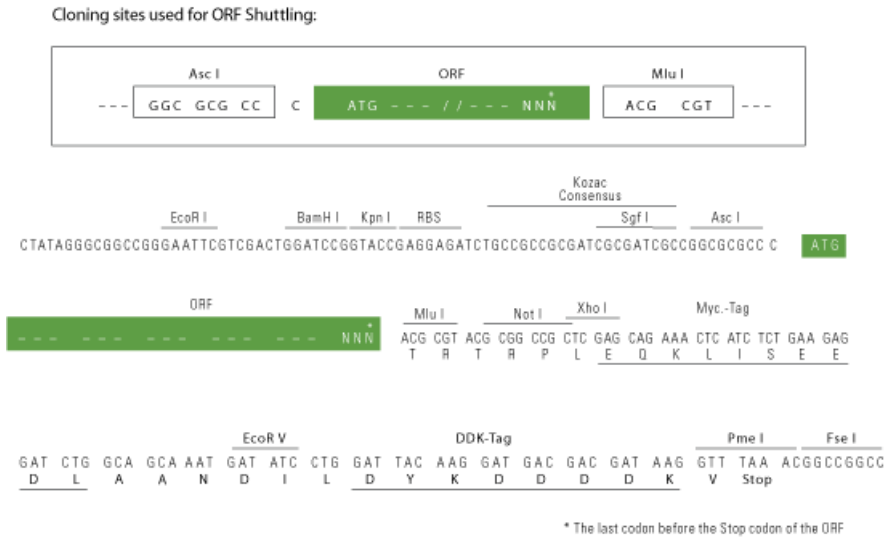
Chromatograms: https://cdn.origene.com/chromatograms/mk6821_a07.zip



[View online »](#)

Restriction Sites: AscI-MluI

Cloning Scheme:



ACCN: NM_017793

ORF Size: 597 bp

OTI Disclaimer: The molecular sequence of this clone aligns with the gene accession number as a point of reference only. However, individual transcript sequences of the same gene can differ through naturally occurring variations (e.g. polymorphisms), each with its own valid existence. This clone is substantially in agreement with the reference, but a complete review of all prevailing variants is recommended prior to use. [More info](#)

OTI Annotation: This clone was engineered to express the complete ORF with an expression tag. Expression varies depending on the nature of the gene.

Components: The ORF clone is ion-exchange column purified and shipped in a 2D barcoded Matrix tube containing 10ug of transfection-ready, dried plasmid DNA (reconstitute with 100 ul of water).

- Reconstitution Method:**
1. Centrifuge at 5,000xg for 5min.
 2. Carefully open the tube and add 100ul of sterile water to dissolve the DNA.
 3. Close the tube and incubate for 10 minutes at room temperature.
 4. Briefly vortex the tube and then do a quick spin (less than 5000xg) to concentrate the liquid at the bottom.
 5. Store the suspended plasmid at -20°C. The DNA is stable for at least one year from date of shipping when stored at -20°C.

Note: Plasmids are not sterile. For experiments where strict sterility is required, filtration with 0.22um filter is required.

RefSeq: [NM_017793.3](#)

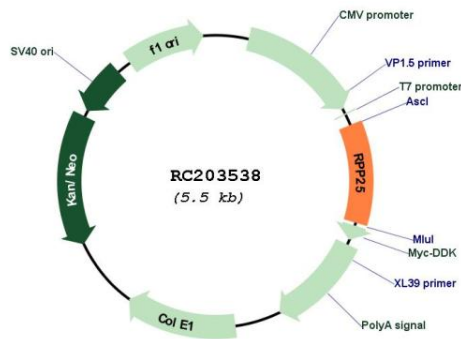
RefSeq Size: 2333 bp

RefSeq ORF: 600 bp

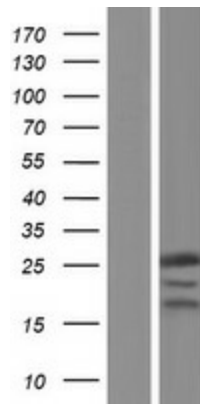
Locus ID: 54913
UniProt ID: [Q9BUL9](#)
Cytogenetics: 15q24.2
MW: 20.6 kDa
Gene Summary:

Component of ribonuclease P, a ribonucleoprotein complex that generates mature tRNA molecules by cleaving their 5'-ends (PubMed:12003489, PubMed:16723659, PubMed:30454648). Also a component of the MRP ribonuclease complex, which cleaves pre-rRNA sequences (PubMed:28115465).[UniProtKB/Swiss-Prot Function]

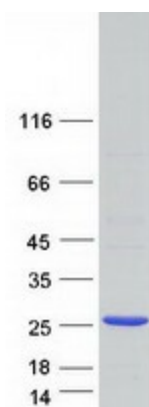
Product images:



Circular map for RC203538



Western blot validation of overexpression lysate (Cat# [LY413534]) using anti-DDK antibody (Cat# [TA50011-100]). Left: Cell lysates from untransfected HEK293T cells; Right: Cell lysates from HEK293T cells transfected with RC203538 using transfection reagent MegaTran 2.0 (Cat# [TT210002]).



Coomassie blue staining of purified RPP25 protein (Cat# [TP303538]). The protein was produced from HEK293T cells transfected with RPP25 cDNA clone (Cat# RC203538) using MegaTran 2.0 (Cat# [TT210002]).