

Product datasheet for **RC203537**

SPINT1 (NM_001032367) Human Tagged ORF Clone

Product data:

Product Type:	Expression Plasmids
Product Name:	SPINT1 (NM_001032367) Human Tagged ORF Clone
Tag:	Myc-DDK
Symbol:	SPINT1
Synonyms:	HAI; HAI1; MANSC2
Mammalian Cell Selection:	Neomycin
Vector:	pCMV6-Entry (PS100001)
E. coli Selection:	Kanamycin (25 ug/mL)



[View online »](#)

ORF Nucleotide Sequence:

>RC203537 ORF sequence
 Red=Cloning site Blue=ORF Green=Tags(s)

TTTTGTAATACGACTCACTATAGGGCGGCCGGAATTCGTCGACTGGATCCGGTACCGAGGAGATCTGCC
 GCC**CGATCGCC**

ATGGCCCTCGAGGACGATGGCCCGCCCGCTCGCCCGCCGGCATCCCTGCCGTCGCTTGTGGC
 TTCTGTGCACGCTCGGCCTCCAGGGCACCCAGGCCGGGCCACCGCCCGCCCTGGGCTGCCCGGG
 AGCCGACTGCCTGAACAGCTTTACCGCCGGGTGCCTGGCTTCGTGCTGGACACCAACGCCTCGGTGAGC
 AACGGAGTACCTTCTGGAGTCCCCACCGTGCGCCGGGGTGGGACTGCGTGCAGCCTGCTGCACCA
 CCCAGAAGTCAACTTGGCGCTAGTGGAGTGCAGCCGACCGCGGGGAGGACGCCATCGCCGCTGCTT
 CCTCATCAACTGCCTCTACGAGCAGAAGTTCGTGTGCAAGTTCGCGCCAGGGAGGGCTTCATCAACTAC
 CTCACGAGGGAAGTGTACCGCTCTACCGCAGTGCAGCCAGGGCTTTGGAGGTCTGGGATCCCCA
 AGGCCTGGGAGGATAGACTTGAAGGTACAACCCAGGAACCCCTGGTGTGAAGGATGTGAAAAACAC
 AGATTGGCGCCTACTGCGGGGTGACACGGATGTCAGGGTAGAGAGAAAGACCCAAACAGGTGAACTG
 TGGGGACTCAAGGAAGGCACCTACTGTTCCAGCTGACAGTACTAGCTCAGACCACCCAGAGGACACGG
 CCAACGTACAGTCACTGTGCTGTCCACCAAGCAGACAGAAGACTACTGCCTCGCATCCAACAAGGTGGG
 TCGCTGCCGGGGCTTTTCCACGCTGGTACTATGACCCACGGAGCAGATCTGCAAGAGTTTCTGTTAT
 GGAGGCTGCTTGGGAACAAGAACAACCTACCTCGGAAGAAGAGTGCATTCTAGCCTGTCCGGGTGTGC
 AAGGCCCTCCATGAAAAGGCGCCATCCAGTGTCTGCGACCTGTGAGCCACCCAGTTCGCTGCAG
 CAATGGCTGTGCATCGACAGTTTCTGGAGTGTGACGACACCCCAACTGCCCGACGCTCCGACGAG
 GCTGCCTGTGAAAAATACACGAGTGGCTTTGACGAGCTCCAGCGCATCCATTTCCCAAGTACAAAGGGC
 ACTGCGTGGACCTGCCAGACACAGGACTTCAAGGAGAGCATCCCGCGTGGTACTACAACCCCTTCAG
 CGAACACTGCGCCCGCTTACCTATGGTGGTTGTTATGGCAACAAGAACAACCTTTGAGGAAGAGCAGCAG
 TGCTCGAGTCTTGTGCGGGCATCTCCAAGAAGGATGTGTTGGCCTGAGGCGGGAAATCCCATCCCCA
 GCACAGGCTCTGTGGAGATGGTGTGCGAGTGTCTGCTCATCTGCATTGTGGTGGTGGTATGCCATCTT
 GGGTTACTGCTTCTCAAGAACCAGAGAAAGGACTTCCACGGACACCACCACCACCACCACCACCCTT
 GCCAGCTCCACTGTCTCCACTACCGAGGACACGGAGCACCTGGTCTATAACCACACCACCCGGCCCTC

ACGCGTACGCGGCCGCTCGAGCAGAAACTCATCTCAGAAGAGGATCTGGCAGCAAATGATATCTGGATT
 ACAAGGATGACGACGATAAGGTTTAA

Protein Sequence:

>RC203537 protein sequence
 Red=Cloning site Green=Tags(s)

MAPARTMARARLAPAGIPAVALWLLCTLGLQGTQAGPPPAPPGLPAGADCLNSFTAGVPGFVLDTNASVS
 NGATFLESPTVRRGWDCVRACCTTQNCNLALVELQPDREGDAIAACFLINCLYEQNFVCKFAPREGFINY
 LTREYRSYRQLRTQGGFGSIPKAWAGIDLKVQPQEPLVLKDVENDWRLLRGDTRVVERKDPNQVEL
 WGLKEGTYLFQLTVTSSDHPEDTANVTVTVLSTKQTEDYCLASNKVGRCRGSFPRWYDPTQICKSFVY
 GGCLGNKNNYLREEECILACRGVQGPSMERRHPVCSGTCQPTQFRCSNGCCIDSFLECDTPNCPDASDE
 AACEKYTSGFDELQRIHFPSDKGHCVDL PDTGLCKESIPRWYYPNFSEHCARFTYGGCYGNKNNFEEQQ
 CLESCRGISKKDVFLRREIPISTGSVEMAVAVFLVICIVVVVAILGYCFFKNQRKDFHGHHPPTP
 ASSTVSTTEDTEHLVYNHTTRPL

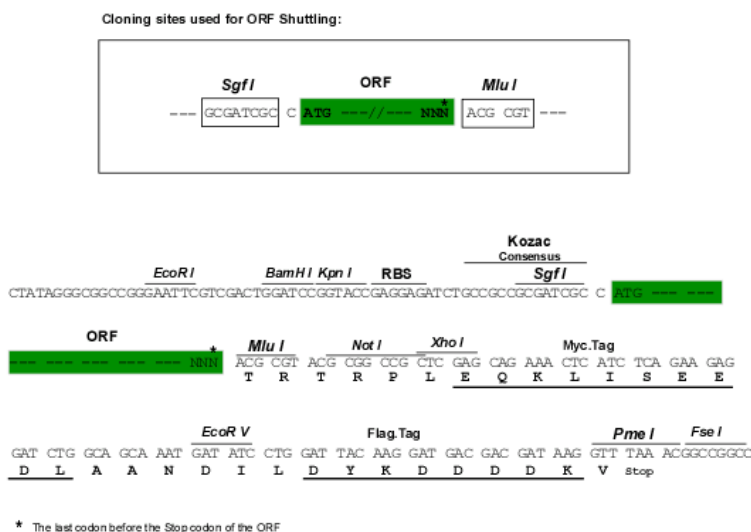
TRTRPLEQKLISEEDLAANDILDYKDDDDKV

Chromatograms:

https://cdn.origene.com/chromatograms/mk6674_e04.zip

Restriction Sites:

SgfI-MluI

Cloning Scheme:


ACCN: NM_001032367

ORF Size: 1539 bp

OTI Disclaimer: The molecular sequence of this clone aligns with the gene accession number as a point of reference only. However, individual transcript sequences of the same gene can differ through naturally occurring variations (e.g. polymorphisms), each with its own valid existence. This clone is substantially in agreement with the reference, but a complete review of all prevailing variants is recommended prior to use. [More info](#)

OTI Annotation: This clone was engineered to express the complete ORF with an expression tag. Expression varies depending on the nature of the gene.

Components: The ORF clone is ion-exchange column purified and shipped in a 2D barcoded Matrix tube containing 10ug of transfection-ready, dried plasmid DNA (reconstitute with 100 ul of water).

Reconstitution Method:

1. Centrifuge at 5,000xg for 5min.
2. Carefully open the tube and add 100ul of sterile water to dissolve the DNA.
3. Close the tube and incubate for 10 minutes at room temperature.
4. Briefly vortex the tube and then do a quick spin (less than 5000xg) to concentrate the liquid at the bottom.
5. Store the suspended plasmid at -20°C. The DNA is stable for at least one year from date of shipping when stored at -20°C.

RefSeq: [NM_001032367.1](#), [NP_001027539.1](#)

RefSeq Size: 2342 bp

RefSeq ORF: 1542 bp

Locus ID: 6692

UniProt ID: [O43278](#)

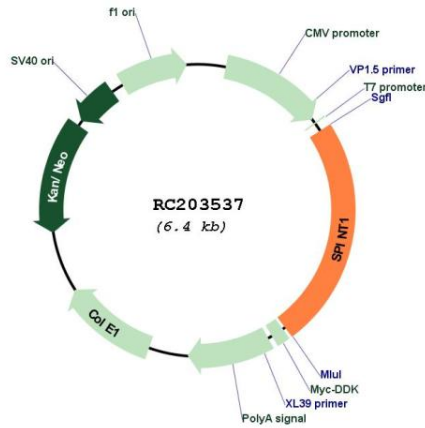
Cytogenetics: 15q15.1

Protein Families: Druggable Genome, Secreted Protein, Transmembrane

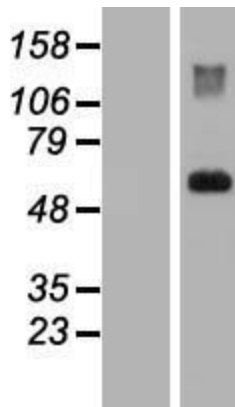
MW: 56.9 kDa

Gene Summary: The protein encoded by this gene is a member of the Kunitz family of serine protease inhibitors. The protein is a potent inhibitor specific for HGF activator and is thought to be involved in the regulation of the proteolytic activation of HGF in injured tissues. Alternative splicing results in multiple variants encoding different isoforms. [provided by RefSeq, Jul 2008]

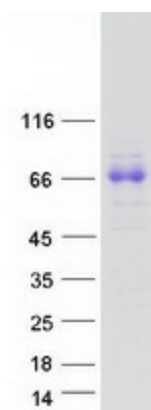
Product images:



Circular map for RC203537



Western blot validation of overexpression lysate (Cat# [LY422310]) using anti-DDK antibody (Cat# [TA50011-100]). Left: Cell lysates from untransfected HEK293T cells; Right: Cell lysates from HEK293T cells transfected with RC203537 using transfection reagent MegaTran 2.0 (Cat# [TT210002]).



Coomassie blue staining of purified SPINT1 protein (Cat# [TP303537]). The protein was produced from HEK293T cells transfected with SPINT1 cDNA clone (Cat# RC203537) using MegaTran 2.0 (Cat# [TT210002]).