

Product datasheet for **RC203535**

XPNPEP1 (NM_020383) Human Tagged ORF Clone

Product data:

Product Type:	Expression Plasmids
Product Name:	XPNPEP1 (NM_020383) Human Tagged ORF Clone
Tag:	Myc-DDK
Symbol:	XPNPEP1
Synonyms:	APP1; SAMP; XPNPEP; XPNPEPL; XPNPEPL1
Mammalian Cell Selection:	Neomycin
Vector:	pCMV6-Entry (PS100001)
E. coli Selection:	Kanamycin (25 ug/mL)



[View online »](#)

ORF Nucleotide Sequence:

>RC203535 ORF sequence
 Red=Cloning site Blue=ORF Green=Tags(s)

TTTTGTAATACGACTCACTATAGGGCGGCCGGAATTCGTCGACTGGATCCGGTACCGAGGAGATCTGCC
 GCC**CGGATCGCC**

ATGCCTCAAAGGTGACTTCAGAGCTGCTTCGGCAGCTGAGACAAGCCATGAGGAACTCTGAGTATGTGA
 CCGAACCGATCCAGGCCTACATCATCCCATCGGGAGATGCTCATCAGAGTGAGTATATTGCTCCATGTGA
 CTGTGCGCGGGCTTTTGTCTCTGGATTCTGATGGCTCTGCGGGCACAGCCATCATCACAGAAGAGCATGCA
 GCCATGTGGACTGACGGGCGCTACTTTCTCAGGCTGCCAAGCAAATGGACAGCAACTGGACACTTATGA
 AGATGGGTCTGAAGGACACCAACTCAGGAAGACTGGCTGGTGAAGTGTGCTTCTGAAGGATCCAGGGT
 TGGTGTGGACCCCTTGATCATTCTACAGATTATTGGAAGAAAATGGCCAAAGTTCTGAGAAGTGCCGGC
 CATCACCTCATTCTGTCAAGGAGAACCTCGTTGACAAAATCTGGACAGACCGTCTGAGCGCCCTTGCA
 AGCCTCTCCTCACACTGGCCTGGATTACACAGGCATCTCCTGGAAGGACAAGGTTGCAGACCTTCGGTT
 GAAAATGGCTGAGAGGAACGTCACTGTGGTTTGTGGTCACTGCCTTGGATGAGATTGCGTGGCTATTTAAT
 CTCGAGGATCAGATGTGGAGCACAATCCAGTATTTTTCTCTACGCAATCATAGGACTAGAGACGATCA
 TGCTCTTCATTGATGGTGACCGCATAGACGCCCCCAAGTGTGAAGGAGCACCTGCTTCTTGACTTGGGTCT
 GGAAGCGAATACAGGATCCAGGTGCATCCCTACAAGTCCATCCTGAGCGAGCTCAAGGCCCTGTGTGCT
 GACCTCTCCCAAGGGGAGAAGGTGTGGTCAAGGAGGATGCTGAGAGGAGGATGCTGAGAGGAGGATCCCA
 AGGACCACCGTCTGTATGCCTTACACCCCATCTGCATCGCCAAAGCTGTGAAGAATTCAGCTGAGTC
 AGAAGGCATGAGGCGGGCTCACATTAAGATGCTGTTGCTCTCTGTGAACCTTTAACTGGCTGGAGAAA
 GAGGTTCCCAAAGGTGGTGTGACAGAGATCTCAGCTGCTGACAAAGCTGAGGAGTTTCGACGGCAACAGG
 CAGACTTTGTGGACCTGAGCTTCCCAACAATTTCCAGTACGGGACCCAACGGCGCCATCATTCACTACGC
 GCCAGTCCCTGAGACGAATAGGACCTTGTCCCTGGATGAGGTGTACCTTATTGACTCGGGTGTCAATAC
 AAGGATGGCACCCAGATGTGACGCGGACAATGCATTTTGGGACCCCTACAGCCTACGAGAAGGAATGCT
 TCACATATGCTCTCAAGGGCCACATAGCTGTGAGTGCAGCCGTTTTCCCGACTGGAACCAAGGTACCT
 TCTTGACTCCTTTGCCGTTTCTGCTTTATGGGATTGAGGCTAGATTACTTGACGCGGACTGGACATGGT
 GTTGGGTCTTTTTGAATGTCCATGAGGGTCTTGCAGCATCAGTTACAAAACATTCTCTGATGAGCCCT
 TGGAGGCAGGCATGATTGCTACTGATGAGCCGGTACTATGAAGATGGGCTTTTGAATTGCGATTGA
 GAATGTTGCTCTGTGGTCTGTGAAGACCAAGTATAATTTAATAACCGGGGAAGCCTGACCTTTGAA
 CCTCTAACATTGGTTCCAATTGACACAAAATGATAGATGTGGATTCTCTTACAGACAAAGAGTGGGACT
 GGCTCAACAATTACCACCTGACCTGCAGGGATGTGATTGGGAAGGAATTGCAGAAACAGGGCCGCCAGGA
 AGCTCTCGAGTGGCTCATCAGAGAGACGCAACCCATCTCCAAACAGCAT

ACGCGTACGCGGCCGCTCGAGCAGAAACTCATCTCAGAAGAGGATCTGGCAGCAAATGATATCCTGGATT
 ACAAGGATGACGACGATAAGGTTTAA

Protein Sequence:

>RC203535 protein sequence
 Red=Cloning site Green=Tags(s)

MPPKVTSELLRQLRQAMRNSEYVTEPIQAYIIPSGDAHQSEYIAPCDRRAFVSGFDGSAGTAIIITEEHA
 AMWTDGRYFLQAAKQMDSNWTLMKMGLKDTPTQEDWLVSVLPEGSRVGVDPPLIIPDTYWKMAKVLRSAG
 HHLIPVKENLVDKIWTDRPERPCKPLLTLGLDYTGISWKDKVADLRLKMAERNVMWFVVTALDEIAWLFN
 LRGSDVEHNPVFFSYAIIIGLETIMLFIDGDRIDAPSVKEHLLLDLGLAEYRIQVHPYKILSELKALCA
 DLSPREKVVWSDKASYAVSETIPKDHRCMPYTPICIAKAVKNSAESEGMRRRAHIKDAVALCELFNWLEK
 EVPKGGVTEISAADKAEFRQQADFVDFSPTISSTGPNGAIHYAPVPETNRTLSDDEVYLIDSGAQY
 KDGTTDVTTRMHFGTPTAYEKECFYVLKGHIAVSAAVFPTGKGLLDSFARSALWDSGLDYLHGTGHG
 VGSFLNVHEGPCGISYKTFSDPELEAGMIVTDEPGYEDGAFGIRIENVVLVVPVKTKYFNFRNRSGLTFE
 PLTLVPIQTKMIDVDSLTDKECDWLNHYHLTCRDVIGKELQKQGRQEALWLIRETQPIISKQH

TRTRPLEQKLISEEDLAANDILDYKDDDDKV

Chromatograms: https://cdn.origene.com/chromatograms/mk6078_f01.zip

Restriction Sites: SgfI-MluI

Cloning Scheme:



ACCN: NM_020383

ORF Size: 1869 bp

OTI Disclaimer: The molecular sequence of this clone aligns with the gene accession number as a point of reference only. However, individual transcript sequences of the same gene can differ through naturally occurring variations (e.g. polymorphisms), each with its own valid existence. This clone is substantially in agreement with the reference, but a complete review of all prevailing variants is recommended prior to use. [More info](#)

OTI Annotation: This clone was engineered to express the complete ORF with an expression tag. Expression varies depending on the nature of the gene.

Components: The ORF clone is ion-exchange column purified and shipped in a 2D barcoded Matrix tube containing 10ug of transfection-ready, dried plasmid DNA (reconstitute with 100 ul of water).

Reconstitution Method:

1. Centrifuge at 5,000xg for 5min.
2. Carefully open the tube and add 100ul of sterile water to dissolve the DNA.
3. Close the tube and incubate for 10 minutes at room temperature.
4. Briefly vortex the tube and then do a quick spin (less than 5000xg) to concentrate the liquid at the bottom.
5. Store the suspended plasmid at -20°C. The DNA is stable for at least one year from date of shipping when stored at -20°C.

RefSeq: [NM_020383.2](#), [NP_065116.2](#)

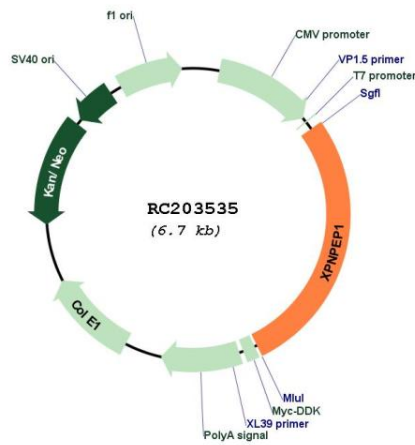
RefSeq Size: 2557 bp

RefSeq ORF: 2001 bp

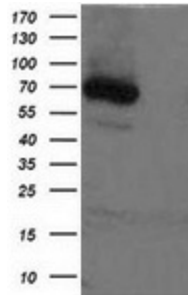
Locus ID: 7511
UniProt ID: [Q9NQW7](#)
Cytogenetics: 10q25.1
Domains: Peptidase_M24
Protein Families: Druggable Genome, Protease
MW: 69.9 kDa

Gene Summary: This gene encodes the cytosolic form of a metalloaminopeptidase that catalyzes the cleavage of the N-terminal amino acid adjacent to a proline residue. The gene product may play a role in degradation and maturation of tachykinins, neuropeptides, and peptide hormones. Alternative splicing results in multiple transcript variants.[provided by RefSeq, Nov 2009]

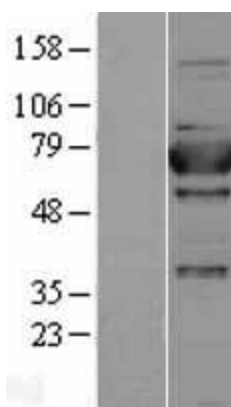
Product images:



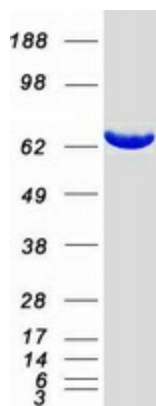
Circular map for RC203535



HEK293T cells were transfected with pCMV6-ENTRY XPNPEP1 (Cat# RC203535, Left lane) or the pCMV6-ENTRY control (Cat# [PS100001], Right lane) cDNA for 48 hrs and lysed. Equivalent amounts of cell lysates (5 ug per lane) were separated by SDS-PAGE and immunoblotted with anti-XPNPEP1 (Cat# [TA501383]).



Western blot validation of overexpression lysate (Cat# [LY402779]) using anti-DDK antibody (Cat# [TA50011-100]). Left: Cell lysates from untransfected HEK293T cells; Right: Cell lysates from HEK293T cells transfected with RC203535 using transfection reagent MegaTran 2.0 (Cat# [TT210002]).



Coomassie blue staining of purified XPNPEP1 protein (Cat# [TP303535]). The protein was produced from HEK293T cells transfected with XPNPEP1 cDNA clone (Cat# RC203535) using MegaTran 2.0 (Cat# [TT210002]).