

## Product datasheet for **RC203534**

### ZNF496 (NM\_032752) Human Tagged ORF Clone

#### Product data:

Product Type:	Expression Plasmids
Product Name:	ZNF496 (NM_032752) Human Tagged ORF Clone
Tag:	Myc-DDK
Symbol:	ZNF496
Synonyms:	NIZP1; ZFP496; ZKSCAN17; ZSCAN49
Mammalian Cell Selection:	Neomycin
Vector:	pCMV6-Entry (PS100001)
E. coli Selection:	Kanamycin (25 ug/mL)



[View online »](#)

**ORF Nucleotide Sequence:**

>RC203534 ORF sequence  
 Red=Cloning site Blue=ORF Green=Tags(s)

TTTTGTAATACGACTCACTATAGGGCGGCCGGGAATTCGTCGACTGGATCCGGTACCGAGGAGATCTGCC  
 GCC**CGGATCGCC**

ATGCCACAGCCCTGTGCCCCGAGTCTTGCTCCGAAGGAAAGTGAGGAGCCCAGGAAAATGAGGAGCC  
 CACCTGGAGAGAACCCTAGCCCCAGGGGAGCTTCCCAGCCCCGAGTCTCTCGCGTCTCTCCGCCG  
 TTTCCGCTACCAGGAGGCGGGCCCGGGAGGCCCTGCAGCGCTCTGGGACCTGTGCGGGGCTGG  
 CTGCGGCCTGAGAGGCACACCAAGGAGCAGATTCTGGAGCTGCTGGTGTGGAGCAGTCTCGCCATCC  
 TGCCCCGGGAGATCCAGAGCTGGGTGCGGGCGCAGGAGCCTGAGAGCGGAGAGCAGGCTGTGGCCGCGT  
 GGAGGCACTGGAACGGGAGCCCGGGAGACCCTGGCAGTGGCTCAAGCACTGTGAAGACCCTGTGGTATT  
 GATGATGGGGACAGCCCTCTGGACCAGGAGCAGGAGCAGCTGCCGGTAGAGCCCCACAGCGACCTTGCAA  
 AGAACCAGGATGCCAGCCATAAACCTGGCACAGTGCCTGGGGTCCCAAGCAGACCACCAAGCCAGCT  
 CAGCGGGACCCAGTTCTGCAAGATGCTTTCCTTCTTCAGGAAGAGAATGTGCGGGACACACAGCAGGTG  
 ACCACCCTCCAGTACCCCCGAGTCGGGTTTCTCCATTCAAGGACATGATTTTATGCTTCTCTGAAGAGG  
 ATTGGTCCCTTCTAGATCCTGCCAGACTGGCTTCTATGGAGAGTTATCATTGGGGAGGATTACGGGGT  
 CTCAATGCCTCCAAACGACCTAGCTGCCAGCCAGATCTCTCCAGGGAGAGGAGAATGAGCCACGCGTT  
 CCAGAGTTGCAGGATCTCCAGGGCAAAGAAGTGCCCCAGGTCTCTACTTGGACTCTCCAAGTCTCCAGC  
 CATTCCAGGTAGAAGAAAGAAGGAAACGTGAGGAGCTGCAGGTGCCAGAGTTCAGGCCTGCCACAGAC  
 GGTGGTGCCTCAAACACCTACCCAGCTGGCGGCAACCCGCGATCTTAGAGAACAGCCTGGATGAAGAA  
 GTGACCATCGAGATCGTTCTCTCCAGCTCTGGGACGAGGACTCCAGCATGGCCCGTACTGCACAGAAG  
 AGCTGGGAGCCCCACAGAGAAGCAGCGCAGCCTCCCCGCCTCCACCGGAGCAGCACCAGCCGGAGG  
 CGAGTGCAGACCTCCAAGAAGTCTACGTGTGTCCGAAGTGTGGGAAAATCTTCCGCTGGAGGGTCAAC  
 TTCATCCGGCATCTGCGGAGCCGAGGAGCAGGAGAAGCCGACGAGTGTGCTGGTGTGCGGGGAGCTGT  
 TCAGCGACAGCGAGGACCTGGATGGGCACCTAGAGAGCCACGAGGCCCAGAAGCCTTACCGGTGTGGTGC  
 CTGCGGGAAGAGCTTCCGCTGAACTCCACCTGCTCTCCACCGGCGGATACACCTGCAGCCGGACAGA  
 CTCCAGCCGGTGGAGAAGAGAGAGCAGGCGCATCCGAGGACGCGGACAAGGGTCCCAAAGGCCGCTGG  
 AAAACGGCAAGGCCAACTGAGCTTCCAGTGTGTGAGTGTGGGAAGGCCTTCCAGCGGCACGACCCT  
 GGCTCGGCACCGCAGCCACTTTCACCTGAAGGACAAAGCCCGGCCCTTCCAGTCCGGTACTGCGTCAAG  
 AGCTTCACGCAGAATATGACCTCTCCGCCACGAGCGCTGCACATGAAGCGCCGTTCCAAGCAGGCTC  
 TGAACCTCTAC

AG**CGGACCG**ACGCGTACGCGGCCGCTCGAGCAGAAACTCATCTCAGAAGAGGATCTGGCAGCAAATGATATCC  
 TGGATTACAAGGATGACGACGATAAGGTTTAA

**Protein Sequence:**

>RC203534 protein sequence  
 Red=Cloning site Green=Tags(s)

MPTALCPRVLAPKESEEPKMRSPGENPSPQGELPSPSSRRLFRFRYQEAAGPREALQRLWDLCGGW  
 LRPERHTKEQILELLVLEQFLAILPREIQSWRAQEPESGEQAVAAVEALEREPRPQWLKHCEDPVVI  
 DDGDSPLDQEQQLPVEPHSDLAKNQDAQPIITLAQCLGLPSRPPSQLSGDPVLQDAFLLQEENVRDTQQV  
 TTLQLPPSRVSPFKDMILCFSEEDWSLLDPAQTGFYGEFIIIGEDYGVSMPPNDLAAQPDLSQGEENEPRV  
 PELQDLQKQVQVSYLDSPLQPFQVEERRKREELQVPEFQACPTVVPQNTYPAGGNPRSLNSLDEE  
 VTIEIVLSSSGDEDSQHGPYCTEELGSPTEKQRSLPASHRSSTEAGGEVQTSKKSIVCPNCGKIFRWRVN  
 FIRHLRSRREQEKPHESVCGELFSDSEDLDGHLESHEAQKPYRCGACGKSFRLNSHLLSHRRIHLQPDR  
 LQPVKREQAASEDADKGPKEPLENGKAKLSFQCCECGKAFQRHDHLARHRSHFHLKDKARPFQCRYCVK  
 SFTQNYDLLRHERLHMKRRSQALNSY

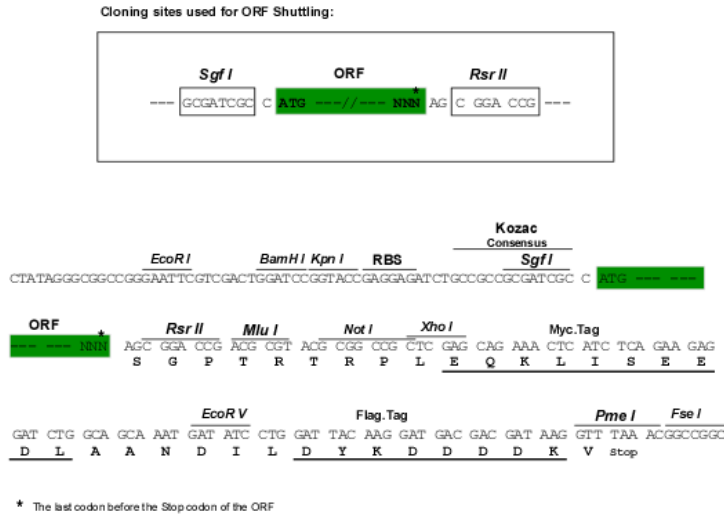
SGP**TRTRPLEQKLI**SEEDLAANDILDYKDDDDKV

**Chromatograms:**

[https://cdn.origene.com/chromatograms/mk6618\\_a09.zip](https://cdn.origene.com/chromatograms/mk6618_a09.zip)

Restriction Sites: SgfI-RsrII

Cloning Scheme:



ACCN: NM\_032752

ORF Size: 1761 bp

OTI Disclaimer: The molecular sequence of this clone aligns with the gene accession number as a point of reference only. However, individual transcript sequences of the same gene can differ through naturally occurring variations (e.g. polymorphisms), each with its own valid existence. This clone is substantially in agreement with the reference, but a complete review of all prevailing variants is recommended prior to use. [More info](#)

OTI Annotation: This clone was engineered to express the complete ORF with an expression tag. Expression varies depending on the nature of the gene.

Components: The ORF clone is ion-exchange column purified and shipped in a 2D barcoded Matrix tube containing 10ug of transfection-ready, dried plasmid DNA (reconstitute with 100 ul of water).

Reconstitution Method:

1. Centrifuge at 5,000xg for 5min.
2. Carefully open the tube and add 100ul of sterile water to dissolve the DNA.
3. Close the tube and incubate for 10 minutes at room temperature.
4. Briefly vortex the tube and then do a quick spin (less than 5000xg) to concentrate the liquid at the bottom.
5. Store the suspended plasmid at -20°C. The DNA is stable for at least one year from date of shipping when stored at -20°C.

RefSeq: [NM\\_032752.3](#)

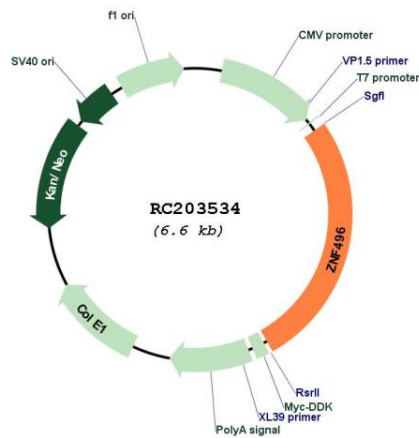
RefSeq Size: 2453 bp

RefSeq ORF: 1764 bp

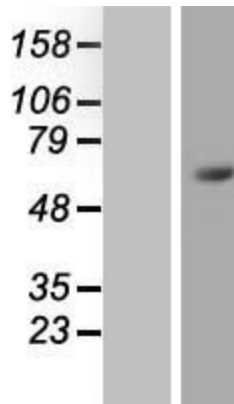
Locus ID: 84838

**UniProt ID:** [Q96IT1](#)  
**Cytogenetics:** 1q44  
**Domains:** KRAB, LER, zf-C2H2  
**Protein Families:** Transcription Factors  
**MW:** 66.9 kDa  
**Gene Summary:** DNA-binding transcription factor that can both act as an activator and a repressor. [UniProtKB/Swiss-Prot Function]

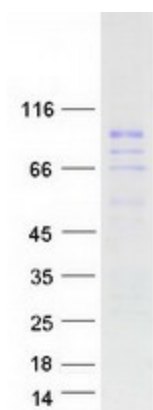
### Product images:



Circular map for RC203534



Western blot validation of overexpression lysate (Cat# [LY409959]) using anti-DDK antibody (Cat# [TA50011-100]). Left: Cell lysates from untransfected HEK293T cells; Right: Cell lysates from HEK293T cells transfected with RC203534 using transfection reagent MegaTran 2.0 (Cat# [TT210002]).



Coomassie blue staining of purified ZNF496 protein (Cat# [TP303534]). The protein was produced from HEK293T cells transfected with ZNF496 cDNA clone (Cat# RC203534) using MegaTran 2.0 (Cat# [TT210002]).