

Product datasheet for **RC203533**

SLC38A10 (NM_138570) Human Tagged ORF Clone

Product data:

Product Type:	Expression Plasmids
Product Name:	SLC38A10 (NM_138570) Human Tagged ORF Clone
Tag:	Myc-DDK
Symbol:	SLC38A10
Synonyms:	PP1744
Mammalian Cell Selection:	Neomycin
Vector:	pCMV6-Entry (PS100001)
E. coli Selection:	Kanamycin (25 ug/mL)



[View online »](#)

ORF Nucleotide
Sequence:

>RC203533 ORF sequence
Red=Cloning site Blue=ORF Green=Tags(s)

TTTTGTAATACGACTCACTATAGGGCGGCCGGGAATTCGTCGACTGGATCCGGTACCGAGGAGATCTGCC
GCC**CGCATCGCC**

ATGACCGCGGCCCGCCCTCCAACCTGGGGCTGATCACGAACATCGTGAACAGCATCGTAGGGGTACGTG
TCCTCACCATGCCCTTCTGCTTCAAACAGTGCGGCATCGTCTGGGGCGCTGCTTTGGTCTTCTGCTC
ATGGATGACGCACCAGTCGTGCATGTTCTTGGTGAAGTCGGCCAGCCTGAGCAAGCGGAGGACCTACGCC
GGCCTGGCATTCCACGCCTACGGGAAGGCAGGCAAGATGCTGGTGGAGACCAGCATGATCGGGCTGATGC
TGGGCACCTGCATCGCTTCTACGTGTCGATCGGCGACTTGGGGTCCAACCTTTTCCCGGCTGTTCCGG
GTTTCAGTGGGCGGCACCTTCCGCATGTTCTGCTGTTCCGCGTGTGCTGTGCATCGTCTCCCGCTC
AGCCTGCAGCGGAACATGATGGCTCCATCCAGTCCTTCAGCGCCATGGCCCTCCTTCTACACCGTGT
TCATGTTGTCGTCGTCCTCTCTCAAGCACGGCCTTTCAGTGGCAGTGGCTGCGGCGGGTTCAG
CTACGTCGCTGGGAGGGCGTCTCCGCTGCATCCCATCTTCGCGATGTCTTCCGCTGCCAGTCCAG
GTGCTGCCACCTACGACAGCCTGGATGAGCCGTCAAGTAAAACCATGAGCTCCATATTTGCTTCCCTCC
TTAATGTGGTCACCACCTTCTACGTCATGGTGGGGTTTTTCGGCTACGTCAGCTTACCAGGACCACGGC
CGGCAACGTGCTCATGCACTTTCCCTCCAACCTGGTGACGGAGATGCTCCGTGTGGGCTTCATGATGCA
GTGGCTGTGGGCTTCCCATGATGATCCTGCCATGCAGGCAGGCCCTGAGCACGCTGCTGTGTGAGCAGC
AGCAAAAAGATGGCACCTTTCAGCAGGGGGCTACATGCCCTTCTCCGGTTTAAAGCACTTACCCTCTC
TGTGGTGTGGAACCATGGTGGTGGCATCCTTATCCCAACGTGGAGACCATCCTGGGCTCACAGGA
GCGACCATGGGAAGCCTCATCTGCTTCACTGCCCGCGCTGATCTACAAGAAAAACACAAGAACGCAC
TTTCTCCAGGTGGTGTGCTGTGGTCCGCTGGGCGTCTGGTGGTGGACTGTACCACACTGTCTGT
GAGCGAGGAGTCCCGAGGACTTGGCAGAGGAAGCCCTGGCGCCGGCTTGGAGAGGCCGAGGGTTTG
ATGAAGGTGGAGGCAGCGCGCTCTCAGCCAGGATCCGTTGTGGCCGTGGCTGAGGATGGCCGGGAGA
AGCCGAAGCTGCCGAAGGAGAGAGAGGAGCTGGAGCAGGCCAGATCAAGGGGCCGTGGATGTGCTGG
ACGGGAAGATGGCAAGGAGGCACCGGAGGAGGCACAGCTCGATCGCCCTGGGCAAGGATTGCTGTGCT
GTGGGCGAGGCCACCGCCACGAGCCTCCTGTTCTCACGACAAGGTGGTGGTAGATGAAGGCCAAGACC
GAGAGGTGCCAGAAGAGAACAACCTCCATCCAGACACGCGGGCGAAAGGCTCCAGGGTCCAGGGCCA
GATGGCGCCGCTTCCCGACTCAGAAAGAGAGAAAACAAGGCCGAGCAGGGAGAGGTTGGGAAGAGG
CCTGGACAGGCCAGGCCTTGGAGGAGCGGGTATCTTCTGAAGATCCCAGAAAGTTCCAGAAGCAG
ATGGTCAGCCAGCTGTCCAGCCTGCAAAGGAGGACCTGGGGCCAGGAGACAGGGGCTGCATCCTCGGCC
CCAGGCAGTGTCTGTGAGCAGCAGAACGGCCTGGCGGTGGGTGGAGGGGAAAAGGCCAAGGGGGACCG
CCGCCAGGCAACGCCCGGGGACACAGGGCAGCCCGAGAGGACAGCGACCACGGTGGGAAGCCTCCCC
TCCCAGCGGAGAAGCCGGCTCCAGGGCCTGGGCTGCCGCCGAGCCTCGCGAGCAGAGGGACGTGGAGCG
AGCGGGTGGAAACCAGGCGGCCAGCCAGCTGGAGGTAAGGCCTCCGCCCTACAGCCGCCTGCCTCAGGC
CCAGGGAGCGGCAGCCCCCTCCCCAGCCCTGGGGTATGCCAGGTATCCTCGGGAGCCCTGCCAGGC
CCCCCTTCTCTTCCAGCCGCTGTGAGCAGACCCCTCGGAGAGCTTTCTGCTCCCTTCCATCAGCAG
CTTGCTTTCTGGGAACCTTTTATCTGCCTTACTCCCTTTAAACACCTGCGGCATCGTCACATGGCTTGT
GATTACCGTTTTATCTCCCTTGTCCCTT

ACGCGTACGCGGCCGCTCGAGCAGAACTCATCTCAGAAGAGGATCTGGCAGCAATGATATCCTGGATT
ACAAGGATGACGACGATAAGGTTTAA

Protein Sequence: >RC203533 protein sequence
Red=Cloning site Green=Tags(s)

MTAAAASNWGLITNIVNSIVGVSVLTMPFCFKQCGIVLGALLLVFCSWMTHQSCMFLVKSASLSKRRTYA
GLAFHAYGKAGKMLVETSMIGLMLGTICIAFYVVIGDLGSNFFARLFGFQVGGTFRMFLFAVSLCIVLPL
SLQRNMMASIQSFAMALLFYTFMFVIVLSSLKHGLFSGQWLRVSYVRWEGVFRCIPIFGMSFACQSQ
VLPTYDSLDEPSVKTMSIFASSLNVVTFYVMVGFFGYVSFTEATAGNVLMHFPSNLVTEMLRVGFMMSS
VAVGFPMILPCRQALSTLLCEQQKDGTF AAGGYMPPLRFKALTL SVVFGTMVGGILIPNVETILGLTG
ATMGSLICFCIPALIYKKIHKNALSSQVVLWVGLGVLVVSTVTTLSVSEEVPEDL AEEAPGGRLGEAEG
MKVEAARLSAQDPVVAVAEDGREPKLPKERELEQAQIKGPVDVPGREDGKEAPEEAQLDRPGQGI AVP
VGEAHRHEPPVPHDKVVVDEGQDREVPEENKPPSRHAGGKAPGVQGMAPPLPDSEREKQEPEQGEV GKR
PGQAQALEEAGDLPEDPQKVPEADGQPAVQPAKEDLGPGRGLHPRPQAVLSEQQNGLAVGGGEKAKGGP
PPGNAAGDTGQPAEDSDHGGKPPLPAEKPAPGPGLPPEPREQRDVERAGGNQAASQLE GKASALQPPASG
PGSGSPLPQPWGDAQVILGSPARPPFSFQPPAEQTPRRAFCSLPISLLSGNLLSALLPFKHLRHRHMAC
DYRFISLAPL

TRTRPLEQKLI SEEDLAANDILDYKDDDDKV

Chromatograms: https://cdn.origene.com/chromatograms/mk6219_c06.zip

Restriction Sites: Sgfl-Mlul

Reconstitution Method:

1. Centrifuge at 5,000xg for 5min.
2. Carefully open the tube and add 100ul of sterile water to dissolve the DNA.
3. Close the tube and incubate for 10 minutes at room temperature.
4. Briefly vortex the tube and then do a quick spin (less than 5000xg) to concentrate the liquid at the bottom.
5. Store the suspended plasmid at -20°C. The DNA is stable for at least one year from date of shipping when stored at -20°C.

RefSeq: [NM_138570.4](#)

RefSeq Size: 3121 bp

RefSeq ORF: 2343 bp

Locus ID: 124565

UniProt ID: [Q9HBR0](#)

Cytogenetics: 17q25.3

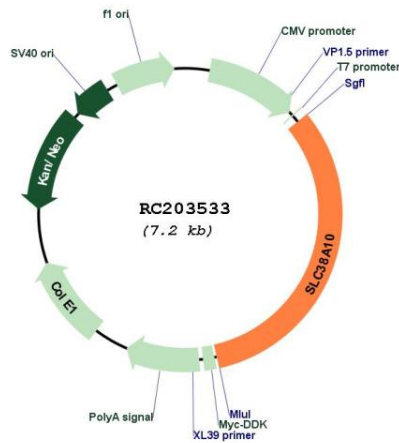
Domains: Aa_trans

Protein Families: Transmembrane

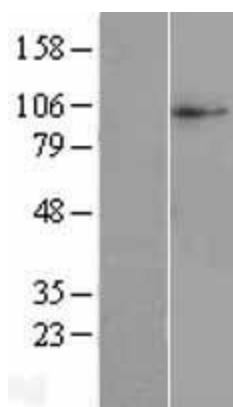
MW: 83.3 kDa

Gene Summary: Putative sodium-dependent amino acid/proton antiporter.[UniProtKB/Swiss-Prot Function]

Product images:



Circular map for RC203533



Western blot validation of overexpression lysate (Cat# [LY408573]) using anti-DDK antibody (Cat# [TA50011-100]). Left: Cell lysates from untransfected HEK293T cells; Right: Cell lysates from HEK293T cells transfected with RC203533 using transfection reagent MegaTran 2.0 (Cat# [TT210002]).