

## Product datasheet for **RC203531**

### COPE (NM\_007263) Human Tagged ORF Clone

#### Product data:

Product Type:	Expression Plasmids
Product Name:	COPE (NM_007263) Human Tagged ORF Clone
Tag:	Myc-DDK
Symbol:	COPE
Synonyms:	epsilon-COP
Mammalian Cell Selection:	Neomycin
Vector:	pCMV6-Entry (PS100001)
E. coli Selection:	Kanamycin (25 ug/mL)
ORF Nucleotide Sequence:	>RC203531 ORF sequence Red=Cloning site Blue=ORF Green=Tags(s)

TTTTGTAATACGACTCACTATAGGGCGCCGGGAATTCGTCGACTGGATCCGGTACCGAGGAGATCTGCC  
GCC**CGATCGCC**

ATGGCGCCTCCGGCCCCGGCCCGCCTCCGGCGGCTCCGGGGAGGTAGACGAGCTGTTTCGACGTAAGA  
ACGCCTTCTACATCGGCAGCTACCAGCAGTGCATAAACGAGGCGCAGCGGGTGAAGCTGTCAAGCCCAGA  
GAGAGACGTGGAGAGGGACGTCTCCTGTATAGAGCGTACCTGGCGCAGAGGAAGTTCGGTGTGGTCCTG  
GATGAGATCAAGCCCTCCTCGCCCTGAGCTCCAGGCCGTGCGCATGTTTGCTGACTACCTCGCCACG  
AGAGTCGGAGGGACAGCATCGTGGCCGAGCTGGACCGAGAGATGAGCAGGAGCGTGGACGTGACCAACAC  
CACCTTCCTGCTCATGGCCGCTCCATCTATCTCCACGACCAGAACC CGGATGCCGCCCTGCGTGGCGTG  
CACCAGGGGGACAGCCTGGAGTGACAGCCATGACAGTGCAGATCCTGCTGAAGCTGGACCGCCTGGACC  
TCGCCCCGAAGGAGCTGAAGAGAATGCAGGACCTGGACGAGGATGCCACCCTCACCCAGCTCGCCACTGC  
CTGGGTACGCCTGGCCACGGGTGGTGAGAAGCTGCAGGATGCCTACTACATCTTCCAGGAGATGGCTGAC  
AAGTGCTCGCCACCCTGCTGCTGCTCAATGGGCAGGCGGCTGCCACATGGCCAGGGCCGCTGGGAGG  
CCGCTGAGGGCCTGCTGCAGGAGGCGCTAGACAAGGATAGTGGTACCCGGAGACGCTGGTCAACCTCAT  
CGTCTGTCCCAGCACCTGGGCAAGCCCCCTGAGGTGACAAACCAGTACCTGTCCCAGCTGAAGGATGCC  
CACAGTCCCATCCCTTTCATCAAGGAGTACCAGCCAAGGAGAACGACTTTGACAGGCTGGTGCTACAGT  
ACGCTCCCAGCGCC

**ACGCGT**ACGCGGCCGCTCGAGCAGAACTCATCTCAGAAGAGGATCTGGCAGCAAATGATATCCTGGATT  
ACAAGGATGACGACGATAAGGTTTAA



[View online »](#)

**Protein Sequence:** >RC203531 protein sequence  
Red=Cloning site Green=Tags(s)

MAPPAPGPASGGSGEVDLFDVKNFYIGSYQQCINEAQRVKLSSPERDVERDVFLYRAYLAQRKFGVVL  
 DEIKPSSAPELQAVRMFADYLAHESRRDSIVAEKDREMSRSVDVTNTTFLMLAASIYLDQNPDAALRAL  
 HQGDSLECTAMTVQILLKLDRLDLARKELKRMQDLDEDATLTQLATAWVSLATGGKEKLDAYYIFQEMAD  
 KCSPTLLLLNGQAACHMAQGRWEAAEGLLQEALDKDSGYPETLVNLIVLSQHLGKPPPEVTNRYLSQLKDA  
 HRSHPFIKEYQAKENDFDRLVLQYAPSA

TRTRPLEQKLISEEDLAANDILDYKDDDDKV

**Chromatograms:** [https://cdn.origene.com/chromatograms/mk6078\\_f09.zip](https://cdn.origene.com/chromatograms/mk6078_f09.zip)

**Restriction Sites:** SgfI-MluI

**Cloning Scheme:**



**ACCN:** NM\_007263

**ORF Size:** 924 bp

**OTI Disclaimer:** The molecular sequence of this clone aligns with the gene accession number as a point of reference only. However, individual transcript sequences of the same gene can differ through naturally occurring variations (e.g. polymorphisms), each with its own valid existence. This clone is substantially in agreement with the reference, but a complete review of all prevailing variants is recommended prior to use. [More info](#)

**OTI Annotation:** This clone was engineered to express the complete ORF with an expression tag. Expression varies depending on the nature of the gene.

**Components:** The ORF clone is ion-exchange column purified and shipped in a 2D barcoded Matrix tube containing 10ug of transfection-ready, dried plasmid DNA (reconstitute with 100 ul of water).

**Reconstitution Method:**

1. Centrifuge at 5,000xg for 5min.
2. Carefully open the tube and add 100ul of sterile water to dissolve the DNA.
3. Close the tube and incubate for 10 minutes at room temperature.
4. Briefly vortex the tube and then do a quick spin (less than 5000xg) to concentrate the liquid at the bottom.
5. Store the suspended plasmid at -20°C. The DNA is stable for at least one year from date of shipping when stored at -20°C.

**RefSeq:** [NM\\_007263.2](#)

**RefSeq Size:** 1134 bp

**RefSeq ORF:** 927 bp

**Locus ID:** 11316

**UniProt ID:** [O14579](#)

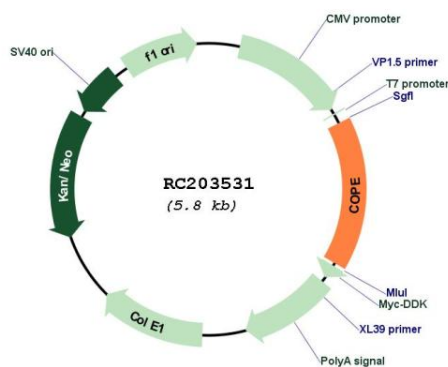
**Cytogenetics:** 19p13.11

**Domains:** Coatomer\_E

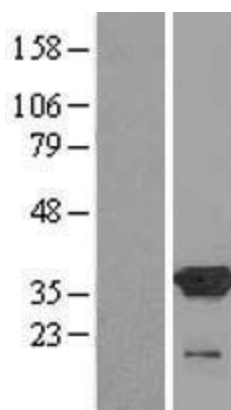
**MW:** 34.5 kDa

**Gene Summary:** The product of this gene is an epsilon subunit of coatomer protein complex. Coatomer is a cytosolic protein complex that binds to dilysine motifs and reversibly associates with Golgi non-clathrin-coated vesicles. It is required for budding from Golgi membranes, and is essential for the retrograde Golgi-to-ER transport of dilysine-tagged proteins. Coatomer complex consists of at least the alpha, beta, beta', gamma, delta, epsilon and zeta subunits. Alternatively spliced transcript variants encoding different isoforms have been identified. [provided by RefSeq, Jul 2008]

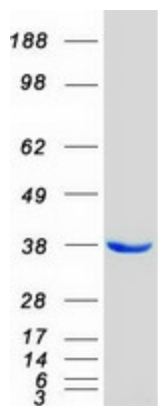
## Product images:



Circular map for RC203531



Western blot validation of overexpression lysate (Cat# [LY416083]) using anti-DDK antibody (Cat# [TA50011-100]). Left: Cell lysates from untransfected HEK293T cells; Right: Cell lysates from HEK293T cells transfected with RC203531 using transfection reagent MegaTran 2.0 (Cat# [TT210002]).



Coomassie blue staining of purified COPE protein (Cat# [TP303531]). The protein was produced from HEK293T cells transfected with COPE cDNA clone (Cat# RC203531) using MegaTran 2.0 (Cat# [TT210002]).