

Product datasheet for **RC203530**

Annexin A11 (ANXA11) (NM_145868) Human Tagged ORF Clone

Product data:

Product Type:	Expression Plasmids
Product Name:	Annexin A11 (ANXA11) (NM_145868) Human Tagged ORF Clone
Tag:	Myc-DDK
Symbol:	Annexin A11
Synonyms:	ALS23; ANX11; CAP-50; CAP50
Mammalian Cell Selection:	Neomycin
Vector:	pCMV6-Entry (PS100001)
E. coli Selection:	Kanamycin (25 ug/mL)



[View online »](#)

ORF Nucleotide Sequence:

>RC203530 ORF sequence
 Red=Cloning site Blue=ORF Green=Tags(s)

TTTTGTAATACGACTCACTATAGGGCGGCCGGGAATTCGTCGACTGGATCCGGTACCGAGGAGATCTGCC
 GCC**CGGATCGCC**

ATGAGCTACCCTGGCTATCCCCGCCCCAGTGGCTACCCACCAGCTGCACCAGTGGTGGTCCCTGGG
 GAGGTGCTGCCTACCCTCCTCCGCCAGCATGCCCCCATCGGGCTGGATAACGTGGCCACTATGCGGG
 GCAGTTCAACCAGGACTATCTCTCGGGAATGGCGGCCAACATGTCTGGGACATTTGGAGGAGCCAACATG
 CCCAACCTGTACCCTGGGGCCCCGGGGCTGGCTACCCACCAGTCCCCCTGGCGGCTTTGGGCAGCCCC
 CCTCTGCCAGCAGCCTGTTCTCCCTATGGGATGTATCCACCCAGGAGGAAACCCACCTCCAGGAT
 GCCCTCATATCCGCCATACCCAGGGGCCCTGTGCCGGGCCAGCCATGCCACCCCGGACAGCAGCCC
 CCAGGGGCTACCCTGGCAGCCACCAGTGACCTACCCTGGTCAGCCTCCAGTGCCTCCCTGGGCAGC
 AGCAGCCAGTCCGAGCTACCCAGGATACCCGGGGTCTGGGACTGTACCCCGCTGTGCCCAACCCA
 GTTTGGAAGCCGAGGCACCATCACTGATGCTCCCGGCTTTGACCCCTGCGAGATGCCGAGTCTCGCG
 AAGGCCATGAAAGGCTTCGGGACGGATGAGCAGGCCATCATTGACTGCCTGGGGAGTCGCTCCAACAAGC
 AGCGGCAGCAGATCCTACTTTCTTCAAGACGGCTTACGCAAGGATTTGATCAAAGATCTGAAATCTGA
 ACTGTCAGGAACTTTGAGAAGACAATCTTGGCTCTGATGAAGACCCAGTCTCTTTGACATTTATGAG
 ATAAAGGAAGCCATCAAGGGGTTGGCACTGATGAAGCCTGCCTGATTGAGATCCTCGCTTCCCGCAGCA
 ATGAGCACATCCGAGAATTAACAGAGCCTACAAAGCAGAATCAAAAAGACCCTGGAAGAGGCCATTTCG
 AAGCGACACATCAGGGCACTTCCAGCGGCTCCTCATCTCTCTCAGGGAAACCGTATGAAAGCACA
 AACGTGGACATGTCACTCGCCAGAGAGATGCCAGGAGCTGTATGCCGGCGGGGAGAACCCTGGGAA
 CAGACGAGTCCAAGTTCAATGCGGTTCTGTGCTCCCGGAGCCGGGCCACCTGGTAGCAGTTTTCAATGA
 GTACCAGAGAATGACAGGCCGGGACATTGAGAAGAGCATCTGCCGGGAGATGTCCGGGACCTGGAGGAG
 GGCATGCTGGCCGTGGTAAATGTCTCAAGAATACCCAGCCTTCTTTGCGGAGAGGCTCAACAAGGCCA
 TGAGGGGGCAGGAACAAGACCAGCCCTGATTGCGATCATGGTGTCTCGCAGCAGAGCCGACCTCCT
 GGACATCAGATCAGAGTATAAGCGGATGTACGGCAAGTCGCTGTACCACGACATCTCGGGAGATACTTCA
 GGGGATTACCGGAAGATTCTGCTGAAGATCTGTGGTGGCAATGAC

ACGCGTACGCGGCCGCTCGAGCAGAACTCATCTCAGAAGAGGATCTGGCAGCAAATGATATCCTGGATT
 ACAAGGATGACGACGATAAGGTTTAA

Protein Sequence:

>RC203530 protein sequence
 Red=Cloning site Green=Tags(s)

MSYPGYPPPPGGYPPAAPGGGPWGGAAYPPPSPMPPIGLDNVATYAGQFNQDYL SGMAANMSGTFGGANM
 PNL YPGAPGAGYPPVPPGGFGQPPSAQQPVPPYGMYPGGNPPSRMPSYPPYPGAPVPGQPMPPPGQQP
 PGAYPGQPPVTPGQPPVPLPGQQQVPVSYPGYPGSGTVPAVPPTQFGSRGITDAPGFDPLRDAEVL R
 KAMKFGTDEQAIIDCLGSRSNQRQQILL SFKTAYGKDLIKDLKSEL SGNFEKTILALMKTPVLFDIYE
 IKEAIKGVGTDEACLEIELASRSNEHIRELNRAYKAFFKTL EEAIRS DTSGHFQRL LISL SQNRDEST
 NVDMSLAQRDAQEL YAAGENRLGTDESKFNAVLCRSRAHLVAVFNEYQRMTGRDIEKSICREMSGDLEE
 GMLAVVKCLKNTPAFFAERLNKAMRGAGTKDRTLIRIMVSRSETDLDIRSEYKRMYGKSLYHDISGDT S
 GDYRKILLKICGGND

TRTRPLEQKLI SEEDLAANDILDYKDDDDKV

Chromatograms:

https://cdn.origene.com/chromatograms/mk6078_b04.zip

Restriction Sites:

Sgfl-Mlul

Cloning Scheme:


ACCN: NM_145868

ORF Size: 1515 bp

OTI Disclaimer: The molecular sequence of this clone aligns with the gene accession number as a point of reference only. However, individual transcript sequences of the same gene can differ through naturally occurring variations (e.g. polymorphisms), each with its own valid existence. This clone is substantially in agreement with the reference, but a complete review of all prevailing variants is recommended prior to use. [More info](#)

OTI Annotation: This clone was engineered to express the complete ORF with an expression tag. Expression varies depending on the nature of the gene.

Components: The ORF clone is ion-exchange column purified and shipped in a 2D barcoded Matrix tube containing 10ug of transfection-ready, dried plasmid DNA (reconstitute with 100 ul of water).

Reconstitution Method:

1. Centrifuge at 5,000xg for 5min.
2. Carefully open the tube and add 100ul of sterile water to dissolve the DNA.
3. Close the tube and incubate for 10 minutes at room temperature.
4. Briefly vortex the tube and then do a quick spin (less than 5000xg) to concentrate the liquid at the bottom.
5. Store the suspended plasmid at -20°C. The DNA is stable for at least one year from date of shipping when stored at -20°C.

RefSeq: [NM_145868.2](#)

RefSeq Size: 2535 bp

RefSeq ORF: 1518 bp

Locus ID: 311

UniProt ID: [P50995](#)

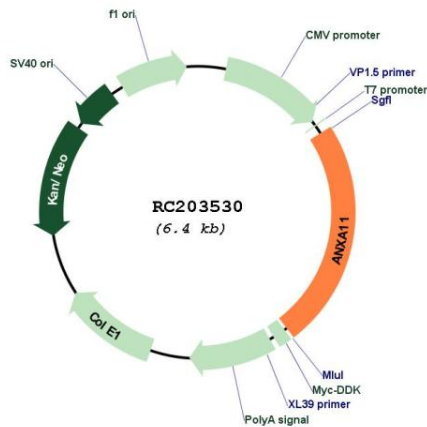
Cytogenetics: 10q22.3

Domains: annexin

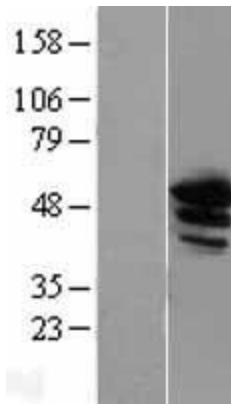
MW: 54.4 kDa

Gene Summary: This gene encodes a member of the annexin family, a group of calcium-dependent phospholipid-binding proteins. Annexins have unique N-terminal domains and conserved C-terminal domains, which contain calcium-dependent phospholipid-binding sites. The encoded protein is a 56-kD antigen recognized by sera from patients with various autoimmune diseases. Several transcript variants encoding two different isoforms have been identified. [provided by RefSeq, Dec 2015]

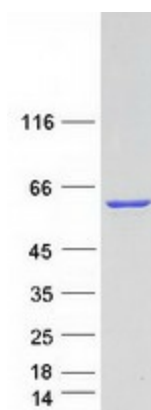
Product images:



Circular map for RC203530



Western blot validation of overexpression lysate (Cat# [LY403443]) using anti-DDK antibody (Cat# [TA50011-100]). Left: Cell lysates from untransfected HEK293T cells; Right: Cell lysates from HEK293T cells transfected with [RC223654] using transfection reagent MegaTran 2.0 (Cat# [TT210002]).



Coomassie blue staining of purified ANXA11 protein (Cat# [TP303530]). The protein was produced from HEK293T cells transfected with ANXA11 cDNA clone (Cat# RC203530) using MegaTran 2.0 (Cat# [TT210002]).