

Product datasheet for **RC203527**

FBXL20 (NM_032875) Human Tagged ORF Clone

Product data:

Product Type:	Expression Plasmids
Product Name:	FBXL20 (NM_032875) Human Tagged ORF Clone
Tag:	Myc-DDK
Symbol:	FBXL20
Synonyms:	Fbl2; Fbl20
Mammalian Cell Selection:	Neomycin
Vector:	pCMV6-Entry (PS100001)
E. coli Selection:	Kanamycin (25 ug/mL)



[View online »](#)

ORF Nucleotide Sequence:

>RC203527 ORF sequence
 Red=Cloning site Blue=ORF Green=Tags(s)

TTTTGTAATACGACTCACTATAGGGCGGCCGGAATTCGTCGACTGGATCCGGTACCGAGGAGATCTGCC
 GCC**CGGATCGCC**

ATGAGGAGGGACGTGAACGGAGTGACCAAGAGCAGGTTTGAGATGTTCTCAAATAGTGATGAAGCTGTAA
 TCAATAAAAAAAGTCCCAAGAAGTCTGTACGGATATTTCTTTCTAGATGTTGTACCTGTGCCG
 CTGTGCTCAGGTCTCCAGGGCCTGGAATGTTCTGGCTCTGGATGGCAGTAAGTGGCAGCGAATTGACCTA
 TTTGATTTCCAGAGGGATATTGAGGGCCGAGTAGTGGAGAATATTTCAAACGATGTGGGGGCTTTTAC
 GAAAGTTAAGTCTTCGTGGATGTCTGGAGTGGGAGACAATGCATTAAGAACCTTTGCACAAAAGTGCAG
 GAACATTGAAGTACTGAATCTAAATGGGTGTACAAGACAACAGACGCTACATGTACTAGCCTTAGCAAG
 TTCTGTTCCAAACTCAGGCACCTTGACTTGGCTTCTGTACATCAATAACAAACATGTCTCTAAAAGCTC
 TGAGTGAGGGATGCCACTGTTGGAGCAGTTGAACATTTCTGGTGTACCAAGTAACCAAGGATGGCAT
 TCAAGCACTAGTGAGGGCTGTGGGGTCTCAAGGCCTTATTCTTAAAAGGCTGCACGCAGCTAGAAGAT
 GAAGCTCTCAAGTACATAGGTGCACACTGCCCTGAAGTGGTACTTTGAAGTGGCAGACTTGCTTGCAAA
 TCACAGATGAAGTCTCATTACTATATGCAGAGGGTGCCATAAGTTACAATCCCTTTGTGCCCTGGCTG
 CTCCAACATCACAGATGCCATCCTGAATGCTCTAGGTGAGAACTGCCACGGCTTAGAATATTGGAAGTG
 GCAAGATGTTCTCAATTAACAGATGTGGGCTTTACCACTCTAGCCAGGAATTGCCATGAAGTGGAAAGA
 TGGACCTGGAAGAGTGTGTTTACAGATAACAGATAGCACATTAATCCAACCTTCTATACACTGCTCCTGACT
 TCAAGTATTGAGTCTGTCTCACTGTGAGCTGATCACAGATGATGGAATTCGTACCTGGGAATGGGGCC
 TGCGCCATGACCAGCTGGAGGTGATTGAGCTGGACAAGTGCCTCAATCACAGATGCATCCCTGGAGC
 ACTTGAAGAGCTGCATAGCCTTGAGCGGATAGAAGTCTATGACTGCCAGCAAATCACACGGGCTGGAAT
 CAAGAGACTCAGGACCCATTTACCAATATTAAGTCCACGCCTACTTCGCACCTGTCACTCCACCCCA
 TCAGTAGGGGAGCAGACAGCGCTTCTGCAGATGCTGCATCATCCTA

ACGCGTACGCGGCCGCTCGAGCAGAACTCATCTCAGAAGAGGATCTGGCAGCAAATGATATCCTGGATT
 ACAAGGATGACGACGATAAGGTTTAA

Protein Sequence:

>RC203527 protein sequence
 Red=Cloning site Green=Tags(s)

MRRDVNGVTKSRFEMFSNSDEAVINKKLPKELLRIFSLFDVVTLCRCAQVSRWNVLALDGSNWQRIDL
 FDFQRDIEGRVVENISKRCGGFLRKL SLRGCLGVGDNALRTFAQNCRNIEVLNLNGCTKTTDATCTSLSK
 FCSKLRHLDLASCTSITNMSLKALSEGCPLEQLNISWCDQVTKDGIQALVRGCGGLKALFLKGCTQLED
 EALKYIGAHCPPELVTLNLQTCLQITDEGLITICRGCHKLQSLCASGCSNITDAILNALGQNCPRLRILEV
 ARCSQLTDVGF TTLARNCHELEKMDLEECVQITDSTLIQLSIHCPRLQVLSL SHCELITDDGIRHLNGA
 CAHDQLEVIELDNCPLITDASLEHLKSHSLERIELYDCQQITRAGIKRLRTHLPNIKVHAYFAPVTPPP
 SVGGSRQRFRCRCIIL

TRTRPLEQKLISEEDLAANDILDYKDDDDKV

Chromatograms:

https://cdn.origene.com/chromatograms/mk6413_c03.zip

Restriction Sites:

SgfI-MluI

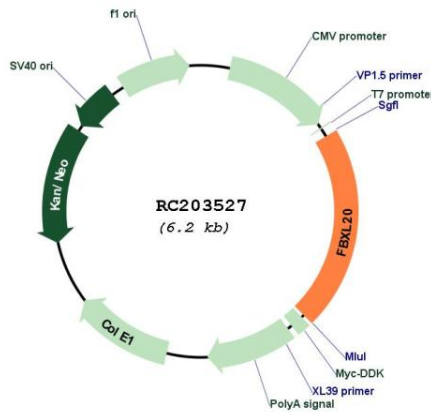
Domains: LRR, F-box, LRR_CC

Protein Families: Druggable Genome

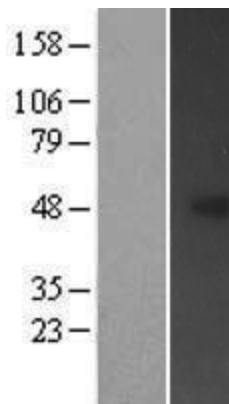
MW: 48.4 kDa

Gene Summary: Members of the F-box protein family, such as FBXL20, are characterized by an approximately 40-amino acid F-box motif. SCF complexes, formed by SKP1 (MIM 601434), cullin (see CUL1; MIM 603134), and F-box proteins, act as protein-ubiquitin ligases. F-box proteins interact with SKP1 through the F box, and they interact with ubiquitination targets through other protein interaction domains (Jin et al., 2004 [PubMed 15520277]).[supplied by OMIM, Mar 2008]

Product images:



Circular map for RC203527



Western blot validation of overexpression lysate (Cat# [LY409907]) using anti-DDK antibody (Cat# [TA50011-100]). Left: Cell lysates from untransfected HEK293T cells; Right: Cell lysates from HEK293T cells transfected with RC203527 using transfection reagent MegaTran 2.0 (Cat# [TT210002]).