

Product datasheet for RC203525

DACT3 (NM_145056) Human Tagged ORF Clone

Product data:

Product Type:	Expression Plasmids
Product Name:	DACT3 (NM_145056) Human Tagged ORF Clone
Tag:	Myc-DDK
Symbol:	DACT3
Synonyms:	DAPPER3; RRR1
Mammalian Cell Selection:	Neomycin
Vector:	pCMV6-Entry (PS100001)
E. coli Selection:	Kanamycin (25 ug/mL)
ORF Nucleotide Sequence:	>RC203525 ORF sequence Red=Cloning site Blue=ORF Green=Tags(s)

TTTTGTAATACGACTCACTATAGGGCGGCCGGAATTCGTCGACTGGATCCGGTACCGAGGAGATCTGCC
GCC**CGATCGCC**

ATGCGCAGCCCGGGCCCTGCGGCCGCCCTCCCACCGACTCGCCGACGCGGGGGGCGCAGGGCGGCCCC
TGGACGGTACATCTCGGCGCTCTGCGCAGGCGCCGCCCGGGGGGGCGGGCCAGCCCCGACAGTCC
TGGGGGCGCGGACGGCGGCCCGGGCGCCAGAACAGCGTGGCCAGCGGGCGCCGACGCGTCTCCGTCC
CCCGCAGCGCGCAGCCGCGGGGAGCCCTCGTTGGAGCGCGTGGGGGCCACCCACCAGCCCTGCCG
CCTTGAGCGCGCTGGGCGTCTGTTGGAGTGGAGGCGGCACCCGAGCCCGTGCGCCGCCCGCCG
CCCTCACCCCCGACAGCCCGCTGAGGGCCGCTTGGTGAAGGCGCAGTACATCCCGGGCGCGCAGGGC
GCCACCCGAGGCCTCCCTGGCCGCGCCGCCCGCCAAACCGCCGCCACTGACCCGCGGCCCGCAGCGTGG
AGCAGTACCACCCCGGGAGCGTCCCGGGCGCCCGGCCCGCTGGACGCATGGCCGAGGCTTCGGGCCG
CCGCGGCTCGCCAGGGCCCGCAAGGCCTCGCGCTCCAGTCTGAGACCAGCCTGCTGGGCCGCGCTCC
GCGGTCCCTTCGGGGCCCTAAGTACCCACGGCGGAGCGGGAAGACCTCGGCCTCCACGGCCACGCC
GCGGCCAGCGCCACGCTGGCGGCCAGGCCGAGGGTCTGCCGTGCTGGCGCTCCACTGCGGAGAT
CGACGCTCCCGATGGGCGCCGCTGCGGCCCGAGCCCTGCGGCGCGTGTCCCGGCCCGGCCCGTCC
CCGTAGCTCCCGAGCGTCTGCTTACGGCTGCGCGGGCAGCGACTCCGAGTGTCTGGTGGGCGCC
TGGGGCCCTGGGACCGCGGGGCTGCGGGAGCGCTCGCGGGGGTTACGGGGAGAGCGAATCGAGCGC
CAGCGAGGGAGAATCGCCTGCCTCAGCTCGCTCCAGCGACTCAGACGGCAGCGGTGGCCTCGTGTGG
CCGCGAGCAGTGGTGGCGGCCACCGCGGCTCTGGGGTGGAGCAGGTGCAGGGGCGCCCGAGGCCCG
CCAAAGTCTTCGTGAAAATCAAAGCTTCCACGCGCTCAAGAAAAGATACTGCGTTTCCGTTCCGGTTC
TCTCAAGGTCATGACTACAGTG

AG**CGGACCG**ACGCGTACGCGGCCGCTCGAGCAGAACTCATCTCAGAAGAGGATCTGGCAGCAAATGATATCC
TGGATTACAAGGATGACGACGATAAGGTTAA



[View online >](#)

Protein Sequence: >RC203525 protein sequence
Red=Cloning site Green=Tags(s)

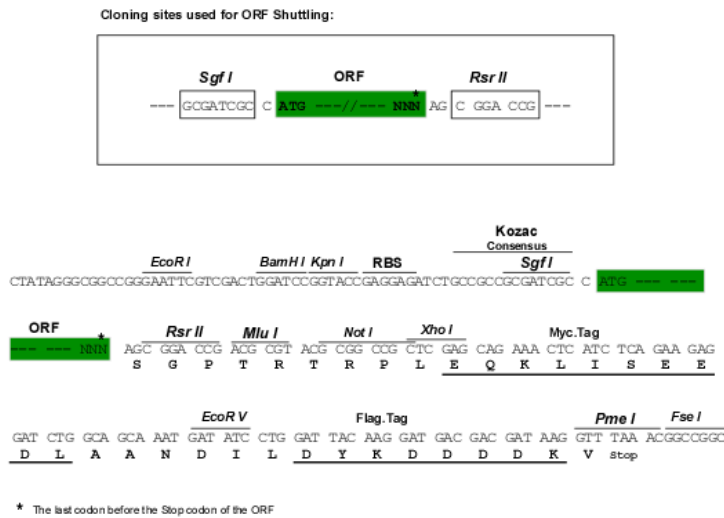
MRSRPRPCGRPPTDSDAGGAGRPLDGYISALLRRRRRRGAGQPRTSPGGADGGPRRQNSVRQRPPDASPS
 PGSARPAREPSLERVGGHPTSPAALSRAWASSWESEAPEPAAPPAAPSPDSPAEGRLVKAQYIPGAQA
 ATRGLPGRAARRKPPPLTRGRSVEQSPPRERPRRAAGRRGRMAEASGRRGSPRARKASRSQSETSLGRAS
 AVPSGPPKYPTAEREEPRPPRRRGPAPTLAAQAAGSCRRWRSTAEIDAADGRRVRPRAPAARVPGPGPS
 PSAPQRRLLYGCAGSDSECSAGRLGPLRRGPAGGVGGYGESESSASEGESPAFSSASSDSDGSGGLVW
 PQLVAATAASGGGAGAGAPAGPAKVFVKIKASHALKKKILFRSGSLKVMTTY

SGPTRTRPLEQKLI SEEDLAANDILDYKDDDDKV

Chromatograms: https://cdn.origene.com/chromatograms/mk6190_f03.zip

Restriction Sites: SgfI-RsrII

Cloning Scheme:



ACCN: NM_145056

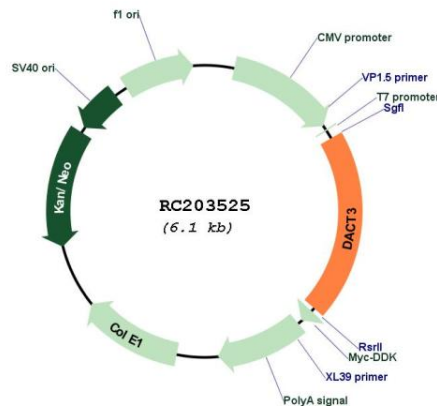
ORF Size: 1212 bp

OTI Disclaimer: Due to the inherent nature of this plasmid, standard methods to replicate additional amounts of DNA in *E. coli* are highly likely to result in mutations and/or rearrangements. Therefore, OriGene does not guarantee the capability to replicate this plasmid DNA. Additional amounts of DNA can be purchased from OriGene with batch-specific, full-sequence verification at a reduced cost. Please contact our customer care team at custsupport@origene.com or by calling 301.340.3188 option 3 for pricing and delivery.

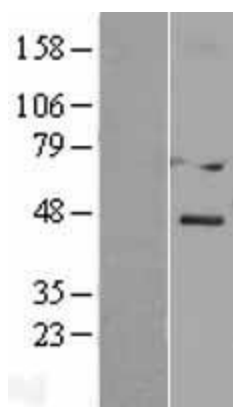
The molecular sequence of this clone aligns with the gene accession number as a point of reference only. However, individual transcript sequences of the same gene can differ through naturally occurring variations (e.g. polymorphisms), each with its own valid existence. This clone is substantially in agreement with the reference, but a complete review of all prevailing variants is recommended prior to use. [More info](#)

OTI Annotation:	This clone was engineered to express the complete ORF with an expression tag. Expression varies depending on the nature of the gene.
Components:	The ORF clone is ion-exchange column purified and shipped in a 2D barcoded Matrix tube containing 10ug of transfection-ready, dried plasmid DNA (reconstitute with 100 ul of water).
Reconstitution Method:	<ol style="list-style-type: none"> 1. Centrifuge at 5,000xg for 5min. 2. Carefully open the tube and add 100ul of sterile water to dissolve the DNA. 3. Close the tube and incubate for 10 minutes at room temperature. 4. Briefly vortex the tube and then do a quick spin (less than 5000xg) to concentrate the liquid at the bottom. 5. Store the suspended plasmid at -20°C. The DNA is stable for at least one year from date of shipping when stored at -20°C.
RefSeq:	<u>NM_145056.1, NP_659493.1</u>
RefSeq Size:	2834 bp
RefSeq ORF:	1890 bp
Locus ID:	147906
UniProt ID:	<u>Q96B18</u>
Cytogenetics:	19q13.32
MW:	41.5 kDa
Gene Summary:	May be involved in regulation of intracellular signaling pathways during development. Specifically thought to play a role in canonical and/or non-canonical Wnt signaling pathways through interaction with DSH (Dishevelled) family proteins.[UniProtKB/Swiss-Prot Function]

Product images:



Circular map for RC203525



Western blot validation of overexpression lysate (Cat# [LY403420]) using anti-DDK antibody (Cat# [TA50011-100]). Left: Cell lysates from untransfected HEK293T cells; Right: Cell lysates from HEK293T cells transfected with RC203525 using transfection reagent MegaTran 2.0 (Cat# [TT210002]).