

Product datasheet for **RC203524**

TCEAL3 (NM_001006933) Human Tagged ORF Clone

Product data:

Product Type:	Expression Plasmids
Product Name:	TCEAL3 (NM_001006933) Human Tagged ORF Clone
Tag:	Myc-DDK
Symbol:	TCEAL3
Synonyms:	WEX8
Mammalian Cell Selection:	Neomycin
Vector:	pCMV6-Entry (PS100001)
E. coli Selection:	Kanamycin (25 ug/mL)
ORF Nucleotide Sequence:	>RC203524 ORF sequence Red=Cloning site Blue=ORF Green=Tags(s)

TTTTGTAATACGACTCACTATAGGGCGGCCGGAATTCGTCGACTGGATCCGGTACCGAGGAGATCTGCC
GCC**CGATCGCC**

ATGGAAAAACCTACAATAAAAAATGAAGGAAACCTGGAAAACGAGGGAAAGCCAGAAGATGAAGTAGAGC
CTGATGATGAAGGAAAGTCAGACGAGGAAGAAAAGCCAGACGTGGAGGGGAAGACAGAATGCGAGGGAAA
GAGAGAGGATGAGGGAGAGCCAGGTGATGAGGGACAACCTGGAAGATGAGGGAAGCCAGGAAAAGCAGGGC
AGGTCCGAAGGTGAGGGCAAGCCACAAGGCGAGGGCAAGCCAGCCTCCAGGCAAAGCCAGAGAGCCAGC
CGCGGGCCGCGAAAAGCGCCCGCTGAAGATTATGTGCCCCGAAAGCAAAAAGAAAAACGGACAGGGG
GACGGACGATTCCCCCAAGGACTCTCAGGAGGACTTACAGGAAAGGCATCTGAGCAGTGAGGAGATGATG
AGAGAATGTGGAGATGTGTCAAGGGCTCAAGAGGAGCTAAGGAAAAACAGAAAATGGGTGGTTTTCATT
GGATGCAAAGAGATGTACAGGATCCATTCGCCCAAGGGGACAACGGGGTGTGAGGGGAGTGAGGGGTGG
AGGTAGGGGCCAGAGGGGCTTACACGATATCCCATACCTT

ACGCGTACGCGGCCGCTCGAGCAGAACTCATCTCAGAAGAGGATCTGGCAGCAAATGATATCCTGGATT
ACAAGGATGACGACGATAAGGTTTAA

Protein Sequence:	>RC203524 protein sequence Red=Cloning site Green=Tags(s)
-------------------	--

MEKPYNKNEGNLENEGKPEDEVEPDDEGKSDEEEKPDVEGKTECEGKREDEGEPEGDEGQLEDEGSQEKQG
RSEGEGKPQEGKPAHQAKPESQPRAAEKRAEDYVPRKAKRKTDRTDDSPKDSQEDLQERHLSSEEMM
RECGDVSRAQEELRKKQKMGGFHWQRDVQDPFAPRGQRGVRGVRGGGRGQRLHDIPYL

TRTRPLEQKLISEEDLAANDILDYKDDDDKV



[View online »](#)

Chromatograms: https://cdn.origene.com/chromatograms/mk6413_c06.zip

Restriction Sites: SgfI-MluI

Cloning Scheme:



ACCN: NM_001006933

ORF Size: 600 bp

OTI Disclaimer: The molecular sequence of this clone aligns with the gene accession number as a point of reference only. However, individual transcript sequences of the same gene can differ through naturally occurring variations (e.g. polymorphisms), each with its own valid existence. This clone is substantially in agreement with the reference, but a complete review of all prevailing variants is recommended prior to use. [More info](#)

OTI Annotation: This clone was engineered to express the complete ORF with an expression tag. Expression varies depending on the nature of the gene.

Components: The ORF clone is ion-exchange column purified and shipped in a 2D barcoded Matrix tube containing 10ug of transfection-ready, dried plasmid DNA (reconstitute with 100 ul of water).

Reconstitution Method:

1. Centrifuge at 5,000xg for 5min.
2. Carefully open the tube and add 100ul of sterile water to dissolve the DNA.
3. Close the tube and incubate for 10 minutes at room temperature.
4. Briefly vortex the tube and then do a quick spin (less than 5000xg) to concentrate the liquid at the bottom.
5. Store the suspended plasmid at -20°C. The DNA is stable for at least one year from date of shipping when stored at -20°C.

Note: Plasmids are not sterile. For experiments where strict sterility is required, filtration with 0.22um filter is required.

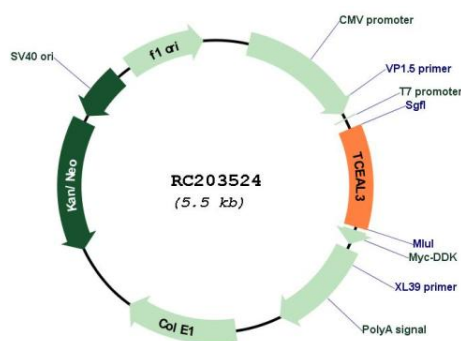
RefSeq: [NM_001006933.1](#), [NP_001006934.1](#)

RefSeq Size: 1154 bp

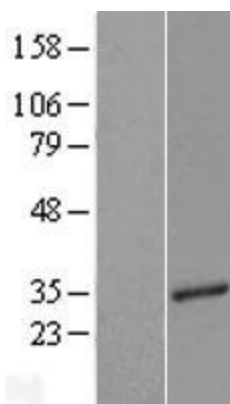
RefSeq ORF: 603 bp
 Locus ID: 85012
 UniProt ID: [Q969E4](#)
 Cytogenetics: Xq22.2
 MW: 22.5 kDa

Gene Summary: This gene encodes a member of the transcription elongation factor A (SII)-like (TCEAL) gene family. Members of this family contain TFA domains and may function as nuclear phosphoproteins that modulate transcription in a promoter context-dependent manner. Multiple family members are located on the X chromosome. Alternative splicing results in multiple transcript variants encoding a single isoform. [provided by RefSeq, Jul 2008]

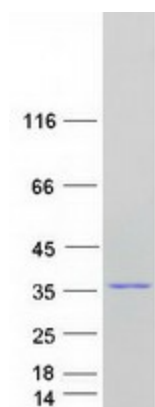
Product images:



Circular map for RC203524



Western blot validation of overexpression lysate (Cat# [LY409871]) using anti-DDK antibody (Cat# [TA50011-100]). Left: Cell lysates from untransfected HEK293T cells; Right: Cell lysates from HEK293T cells transfected with [RC218119] using transfection reagent MegaTran 2.0 (Cat# [TT210002]).



Coomassie blue staining of purified TCEAL3 protein (Cat# [TP303524]). The protein was produced from HEK293T cells transfected with TCEAL3 cDNA clone (Cat# RC203524) using MegaTran 2.0 (Cat# [TT210002]).