

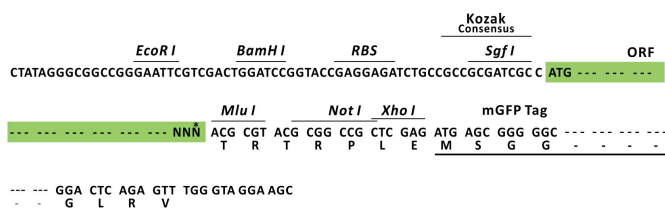
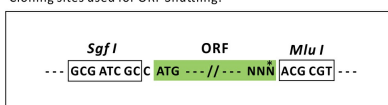
Product datasheet for RC203522L4

ZBED3 (NM_032367) Human Tagged Lenti ORF Clone

Product data:

Product Type:	Expression Plasmids
Product Name:	ZBED3 (NM_032367) Human Tagged Lenti ORF Clone
Tag:	mGFP
Symbol:	ZBED3
Mammalian Cell Selection:	Puromycin
Vector:	pLenti-C-mGFP-P2A-Puro (PS100093)
E. coli Selection:	Chloramphenicol (34 ug/mL)
ORF Nucleotide Sequence:	The ORF insert of this clone is exactly the same as(RC203522).
Restriction Sites:	Sgfl-MluI
Cloning Scheme:	

Cloning sites used for ORF Shuttling:



* The last codon before the Stop codon of the ORF.

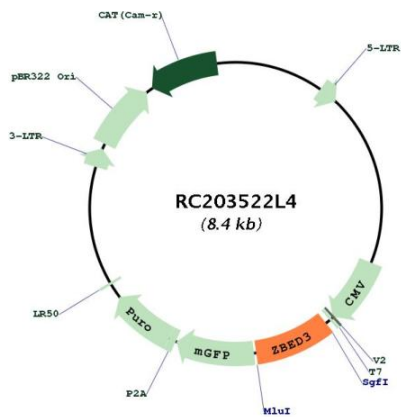
ACCN:	NM_032367
ORF Size:	702 bp



[View online »](#)

OTI Disclaimer:	The molecular sequence of this clone aligns with the gene accession number as a point of reference only. However, individual transcript sequences of the same gene can differ through naturally occurring variations (e.g. polymorphisms), each with its own valid existence. This clone is substantially in agreement with the reference, but a complete review of all prevailing variants is recommended prior to use. More info
OTI Annotation:	This clone was engineered to express the complete ORF with an expression tag. Expression varies depending on the nature of the gene.
Components:	The ORF clone is ion-exchange column purified and shipped in a 2D barcoded Matrix tube containing 10ug of transfection-ready, dried plasmid DNA (reconstitute with 100 ul of water).
Reconstitution Method:	<ol style="list-style-type: none">1. Centrifuge at 5,000xg for 5min.2. Carefully open the tube and add 100ul of sterile water to dissolve the DNA.3. Close the tube and incubate for 10 minutes at room temperature.4. Briefly vortex the tube and then do a quick spin (less than 5000xg) to concentrate the liquid at the bottom.5. Store the suspended plasmid at -20°C. The DNA is stable for at least one year from date of shipping when stored at -20°C.
RefSeq:	NM_032367.2
RefSeq Size:	1437 bp
RefSeq ORF:	705 bp
Locus ID:	84327
UniProt ID:	Q96IU2
Cytogenetics:	5q13.3
Domains:	zf-BED
MW:	25.1 kDa
Gene Summary:	This gene belongs to a class of genes that arose through hAT DNA transposition and that encode regulatory proteins. This gene is upregulated in lung cancer tissues, where the encoded protein causes an accumulation of beta-catenin and enhanced lung cancer cell invasion. In addition, the encoded protein can be secreted and be involved in resistance to insulin. [provided by RefSeq, Jul 2016]

Product images:



Circular map for RC203522L4