

Product datasheet for **RC203522**

ZBED3 (NM_032367) Human Tagged ORF Clone

Product data:

Product Type:	Expression Plasmids
Product Name:	ZBED3 (NM_032367) Human Tagged ORF Clone
Tag:	Myc-DDK
Symbol:	ZBED3
Mammalian Cell Selection:	Neomycin
Vector:	pCMV6-Entry (PS100001)
E. coli Selection:	Kanamycin (25 ug/mL)
ORF Nucleotide Sequence:	>RC203522 representing NM_032367 Red=Cloning site Blue=ORF Green=Tags(s)

TTTTGTAATACGACTCACTATAGGGCGGCCGGAATTCGTCGACTGGATCCGGTACCGAGGAGATCTGCC
GCC**CGATCGCC**

ATGAGGAGTGGCGAGCCGGCCTGCACCATGGACCAGGCCCGGGGCTGGACGACGCGGGCGGGGGCG
GTCAGTGTCCGGGACTGGGGCGGGCGCCGACGCCGACGCCTCCCGGCCGCTGGGGCGCCATACTCCGA
GGCCTGGGGTACTTCCACCTGGCGCGGGGCGCCCGGGCATCCGTCGGGCCACTGGGCCACCTGCCGT
CTGTGCGGGGAGCAGGTGGGCCCGGGCCCGGGCTTCCACGCGGGGACCTCGGCGTTGTGGAGGCACCTGA
GGAGCGCGCACCGCGGGAGCTGGAGAGCAGCGGCCCGGGAGCTCCCCACCTGCCGCGCCCTGCCCGCC
GCCGCCCGGCCCGCTGCGGCCCGGAGGGCGACTGGGCGCGCCTGCTGGAACAGATGGGCGCGCTGGCC
GTGCGCGGACCGCGGGAGCGGGAGCTGGAGCGGCGGAGCTGGCCGTGGAGCAGGGCGAGCGGCC
TGGAGCGGAGGCGGAGGGCGCTGCAGGAGGAAGAGCGCGCGCGGCCAGGCGCGCGGGAACTGCAGGC
CGAGCGGGAGGCGCTGCAGGCGCGGCTGCGGGATGTGAGCCGCGTGAGGGCGCCCTGGGCTGGGCCCC
GCTGCGCCCGCGCTCAAGGACGACCCGAGGGTGACAGGGACGGCTGCGTCATCACAAGGTCTCTCC
TG

ACGCGTACGCGGCCGCTCGAGCAGAACTCATCTCAGAAGAGGATCTGGCAGCAAATGATATCTGGATT
ACAAGGATGACGACGATAAGGTTTAA



[View online »](#)

Protein Sequence: >RC203522 representing NM_032367
 Red=Cloning site Green=Tags(s)

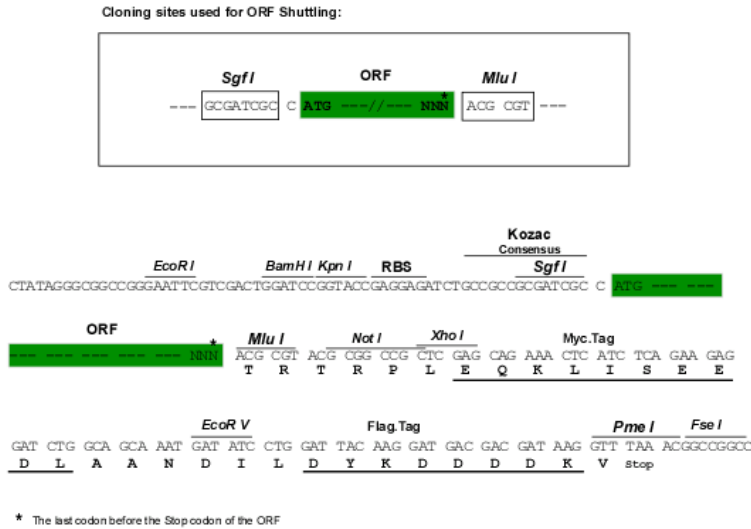
MRSGEPACTMDQARGLDDAAARGGQCPGLGPAPTPTPPGRLGAPYSEAWGYFHLAPGRPGHPSGHWATCR
 LCGEQVGRGPGFHAGTSALWRHLRSAHRRLESSGAGSSPPAAPCPPPPGAAAPEGDWARLLEQMGALA
 VRGSRRLERLERRELAVEQGERALERRRRALQEEERAAAQARRELQAEREALQARLRDVSRRREGALGWAP
 AAPPLKDDPEGDRDGCVITKVL

TRTRPLEQKLISEEDLAANDILDYKDDDDKV

Chromatograms: https://cdn.origene.com/chromatograms/mk8112_f06.zip

Restriction Sites: SgfI-MluI

Cloning Scheme:



ACCN: NM_032367

ORF Size: 702 bp

OTI Disclaimer: The molecular sequence of this clone aligns with the gene accession number as a point of reference only. However, individual transcript sequences of the same gene can differ through naturally occurring variations (e.g. polymorphisms), each with its own valid existence. This clone is substantially in agreement with the reference, but a complete review of all prevailing variants is recommended prior to use. [More info](#)

OTI Annotation: This clone was engineered to express the complete ORF with an expression tag. Expression varies depending on the nature of the gene.

Components: The ORF clone is ion-exchange column purified and shipped in a 2D barcoded Matrix tube containing 10ug of transfection-ready, dried plasmid DNA (reconstitute with 100 ul of water).

Reconstitution Method:

1. Centrifuge at 5,000xg for 5min.
2. Carefully open the tube and add 100ul of sterile water to dissolve the DNA.
3. Close the tube and incubate for 10 minutes at room temperature.
4. Briefly vortex the tube and then do a quick spin (less than 5000xg) to concentrate the liquid at the bottom.
5. Store the suspended plasmid at -20°C. The DNA is stable for at least one year from date of shipping when stored at -20°C.

RefSeq: [NM_032367.4](#)

RefSeq Size: 1437 bp

RefSeq ORF: 705 bp

Locus ID: 84327

UniProt ID: [Q96IU2](#)

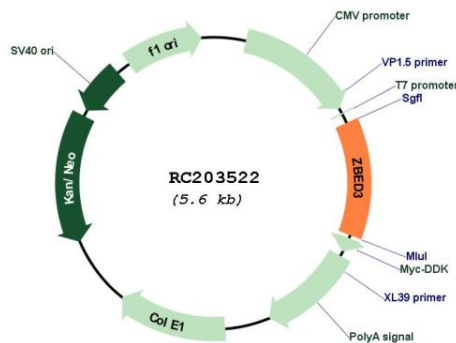
Cytogenetics: 5q13.3

Domains: zf-BED

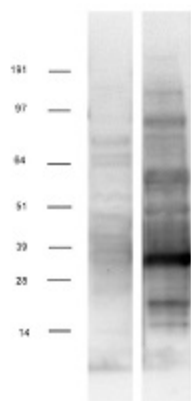
MW: 25.1 kDa

Gene Summary: This gene belongs to a class of genes that arose through hAT DNA transposition and that encode regulatory proteins. This gene is upregulated in lung cancer tissues, where the encoded protein causes an accumulation of beta-catenin and enhanced lung cancer cell invasion. In addition, the encoded protein can be secreted and be involved in resistance to insulin. [provided by RefSeq, Jul 2016]

Product images:



Circular map for RC203522



Western blot validation of overexpression lysate (Cat# [LY410161]) using anti-DDK antibody (Cat# [TA50011-100]). Left: Cell lysates from untransfected HEK293T cells; Right: Cell lysates from HEK293T cells transfected with RC203522 using transfection reagent MegaTran 2.0 (Cat# [TT210002]).