

Product datasheet for RC203516

NTAL (LAT2) (NM_014146) Human Tagged ORF Clone

Product data:

Product Type:	Expression Plasmids
Product Name:	NTAL (LAT2) (NM_014146) Human Tagged ORF Clone
Tag:	Myc-DDK
Symbol:	NTAL
Synonyms:	HSPC046; LAB; NTAL; WBSCR5; WBSCR15; WSCR5
Mammalian Cell Selection:	Neomycin
Vector:	pCMV6-Entry (PS100001)
E. coli Selection:	Kanamycin (25 ug/mL)
ORF Nucleotide Sequence:	>RC203516 ORF sequence Red=Cloning site Blue=ORF Green=Tags(s)

TTTTGTAATACGACTCACTATAGGGCGCCGGGAATTCGTCGACTGGATCCGGTACCGAGGAGATCTGCC
GCC**CGATCGCC**

ATGAGCTCGGGACTGAACTGCTGTGGCCCGGAGCAGCGCTGCTGGTGTGTTGGGGTGGCAGCCAGTC
TGTGTGTGCGTCTCACGCCAGGTGCAAAGAGGTGAGAGAAAATCTACCAGCAGAGAAGTCTGCGTGA
GGACCAACAGAGCTTTACGGGGTCCCGGACCTACTCCTTGGTCGGGCAGGCATGGCCAGGACCCCTGGCG
GACATGGCACCCACAAGGAAGGACAAGCTGTTGCAATTCTACCCAGCCTGGAGGATCCAGCATCTTCCA
GGTACCAGAACTCAGCAAAGGAAGCAGACACGGGTCGGAGGAAGCCTACATAGACCCCATTGCCATGGA
GTATTACAACTGGGGCGGTTCTCGAAGCCCCAGAAGATGATGATGCCAATTCTACGAGAATGTGCTC
ATTTGCAAGCAGAAAACACAGAGACAGGTGCCAGCAGGAGGGCATAGGTGGCCTCTGCAGAGGGGACC
TCAGCCTGTCACTGGCCCTGAAGACTGGCCCCACTTCTGGTCTCTGTCCCTCTGCCTCCCCGGAAGAAGA
TGAGGAATCTGAGGATTATCAGAACTCAGCATCCATCCATCAGTGGCGGAGTCCAGGAAGGTATGGGG
CAACTCCAGAGAGAAGCATCCCCGGCCCGTGGGAAGCCAGACGAGGAGGACGGGGAACCGGATTACG
TGAATGGGGAGGTGGCAGCCACAGAAGCC

ACGCGTACGCGGCCGCTCGAGCAGAAACTCATCTCAGAAGAGGATCTGGCAGCAAATGATATCCTGGATT
ACAAGGATGACGACGATAAGGTTTAA



[View online »](#)

Protein Sequence: >RC203516 protein sequence
Red=Cloning site Green=Tags(s)

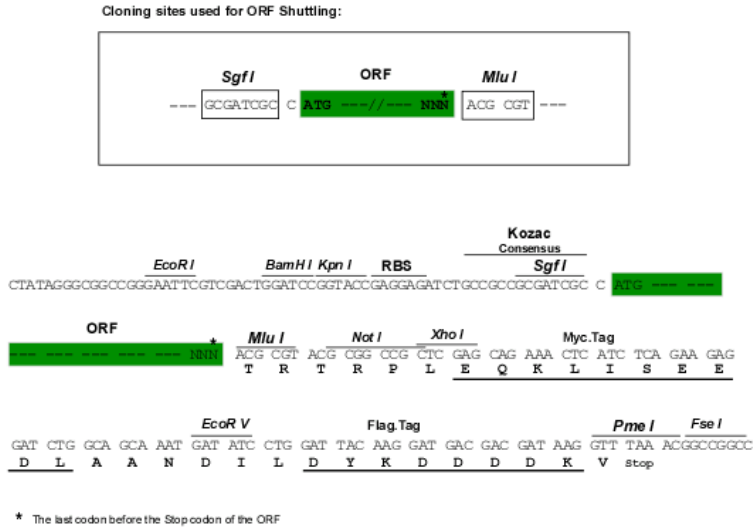
MSSGTELLWPGAALLVLLGVAASLCVRCRSPGAKRSEKIYQQRSLREDQQSFTGSRTYSLVGQAWPGPLA
 DMAPTRKDKLLQFYPSLEDPASSRYQNFSGSRHGSEEAYIDPIAMEYNNWGRFSKPPEDDDANSYENVL
 ICKQKTTETGAQQEGIGGLCRGDLSSLALKTGPTSGLCPSASPEEDEESEDYQNSASIHQWRESRKVMG
 QLQREASPGPVGSPDEEDGEPDYVNGEVAATEA

TRTRPLEQKLISEEDLAANDILDYKDDDDKV

Chromatograms: https://cdn.origene.com/chromatograms/mk6424_b06.zip

Restriction Sites: SgfI-MluI

Cloning Scheme:



ACCN: NM_014146

ORF Size: 729 bp

OTI Disclaimer: The molecular sequence of this clone aligns with the gene accession number as a point of reference only. However, individual transcript sequences of the same gene can differ through naturally occurring variations (e.g. polymorphisms), each with its own valid existence. This clone is substantially in agreement with the reference, but a complete review of all prevailing variants is recommended prior to use. [More info](#)

OTI Annotation: This clone was engineered to express the complete ORF with an expression tag. Expression varies depending on the nature of the gene.

Components: The ORF clone is ion-exchange column purified and shipped in a 2D barcoded Matrix tube containing 10ug of transfection-ready, dried plasmid DNA (reconstitute with 100 ul of water).

Reconstitution Method:

1. Centrifuge at 5,000xg for 5min.
2. Carefully open the tube and add 100ul of sterile water to dissolve the DNA.
3. Close the tube and incubate for 10 minutes at room temperature.
4. Briefly vortex the tube and then do a quick spin (less than 5000xg) to concentrate the liquid at the bottom.
5. Store the suspended plasmid at -20°C. The DNA is stable for at least one year from date of shipping when stored at -20°C.

RefSeq: [NM_014146.4](#)

RefSeq Size: 2010 bp

RefSeq ORF: 732 bp

Locus ID: 7462

UniProt ID: [Q9GZY6](#)

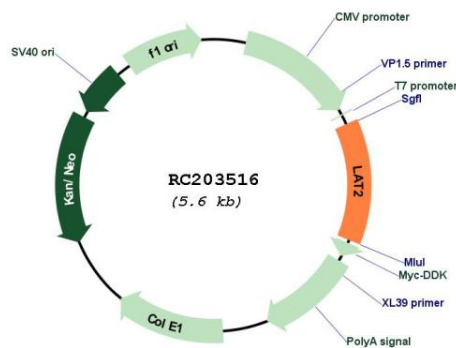
Cytogenetics: 7q11.23

Protein Families: Transmembrane

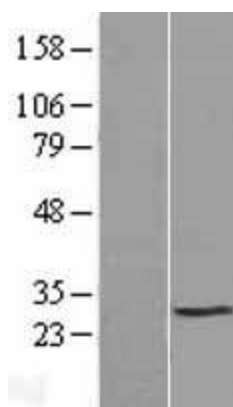
MW: 26.6 kDa

Gene Summary: This gene is one of the contiguous genes at 7q11.23 commonly deleted in Williams syndrome, a multisystem developmental disorder. This gene consists of at least 14 exons, and its alternative splicing generates 3 transcript variants, all encoding the same protein. [provided by RefSeq, Jul 2008]

Product images:



Circular map for RC203516



Western blot validation of overexpression lysate (Cat# [LY415475]) using anti-DDK antibody (Cat# [TA50011-100]). Left: Cell lysates from untransfected HEK293T cells; Right: Cell lysates from HEK293T cells transfected with RC203516 using transfection reagent MegaTran 2.0 (Cat# [TT210002]).