

## Product datasheet for RC203513

### TMEM41A (NM\_080652) Human Tagged ORF Clone

#### Product data:

|                           |   |
|---------------------------|---|
| Product Type:             | Expression Plasmids   |
| Product Name:             | TMEM41A (NM_080652) Human Tagged ORF Clone                        |
| Tag:                      | Myc-DDK   |
| Symbol:                   | TMEM41A   |
| Synonyms:                 | 2900010K02Rik   |
| Mammalian Cell Selection: | Neomycin  |
| Vector:                   | pCMV6-Entry (PS100001)  |
| E. coli Selection:        | Kanamycin (25 ug/mL)  |
| ORF Nucleotide Sequence:  | >RC203513 ORF sequence<br>Red=Cloning site Blue=ORF Green=Tags(s) |

TTTTGTAATACGACTCACTATAGGGCGCCGGGAATTCGTCGACTGGATCCGGTACCGAGGAGATCTGCC  
GCC**CGGATCGCC**

ATGCGCCCGTTCTCGGCCTCCTTCTGGTCTTCGCCGGCTGCACCTTCGCCTTGTACTTGCTGTCGACGC  
GACTGCCCGCGGGCGGAGACTGGGCTCCACCGAGGAGGCTGGAGGCAGGTCGCTGTGGTCCCTCCGA  
CCTGGCAGAGCTGCGGGAGCTCTGAGGTCTTCGAGAGTACCGGAAGGAGCACCAGGCCTACGTGTT  
CTGCTCTTCTGCGGCCTACCTCTACAAACAGGGCTTTGCCATCCCGGCTCCAGCTTCTGAATGTTT  
TAGCTGGTGCCTGTTTGGGCCATGGCTGGGGCTTCTGCTGTGCTGTGTGTTGACCTCGGTGGTGCCAC  
ATGCTGCTACCTGCTCTCCAGTATTTTTGGCAAACAGTTGGTGGTGCCTACTTTCTGATAAAGTGCC  
CTGCTGCAGAGAAAGGTGGAGGAGAACAGAAACAGCTTGTTTTTTTCTTATTGTTTTGAGACTTTTCC  
CCATGACACCAAAGTGGTCTTGAACCTCTCGGCCCAATTCTGAACATCCCATCGTGCAGTCTTCTT  
CTCAGTCTTATCGGTTTGATCCCATATAATTTTCATCTGTGTGCAGACAGGGTCCATCCTGTCAACCCTA  
ACCTCTCGGATGCTCTTTCTCCTGGGACTGTCTTTAAGCTGTTGGCCATTGCCATGGTGGCATTAA  
TTCCTGGAACCTCATTAAAAATTTAGTCAGAAACATCTGCAATTGAATGAAACAAGTACTGCTAATCA  
TATACACAGTAGAAAAGACACA

**ACGCGT**ACGCGGCCGCTCGAGCAGAAACTCATCTCAGAAGAGGATCTGGCAGCAAATGATATCCTGGATT  
ACAAGGATGACGACGATAAGGTTTAA



[View online »](#)

**Protein Sequence:** >RC203513 protein sequence  
Red=Cloning site Green=Tags(s)

MRPLLGLLLVFAGCTFALYLLSTRLPRGRRLGSTEEAGGRSLWFPSDLAELRELSEVLREYRKEHQAYVFLFCGAYLYKQGFaipgssflnvlagalfgpwllgllccvltsvgatccyllssifgkqlvvsyfpdkvaLLQRKVEENRNSLFFLLFLRLFPMTPNWFLNLSAPILNIPIVQFFSVLIGLIPYNFICVQTGSILSTLTSLDALFSWDTVFKLLAIAMVALIPGTLIKKFSQKHLQLNETSTANHIHSRKDT

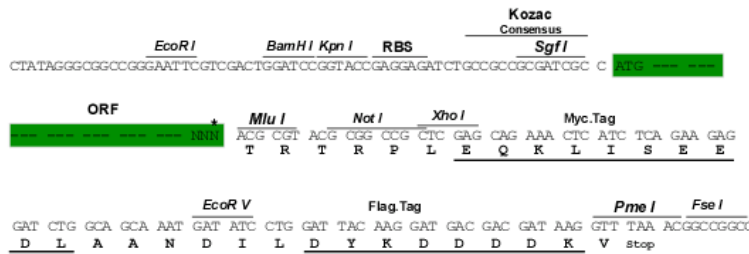
TRTRPLEQKLISEEDLAANDILDYKDDDDKV

**Chromatograms:** [https://cdn.origene.com/chromatograms/mk6414\\_f06.zip](https://cdn.origene.com/chromatograms/mk6414_f06.zip)

**Restriction Sites:** SgfI-MluI

**Cloning Scheme:**

Cloning sites used for ORF Shuttling:



\* The last codon before the Stop codon of the ORF

**ACCN:** NM\_080652

**ORF Size:** 792 bp

**OTI Disclaimer:** The molecular sequence of this clone aligns with the gene accession number as a point of reference only. However, individual transcript sequences of the same gene can differ through naturally occurring variations (e.g. polymorphisms), each with its own valid existence. This clone is substantially in agreement with the reference, but a complete review of all prevailing variants is recommended prior to use. [More info](#)

**OTI Annotation:** This clone was engineered to express the complete ORF with an expression tag. Expression varies depending on the nature of the gene.

**Components:** The ORF clone is ion-exchange column purified and shipped in a 2D barcoded Matrix tube containing 10ug of transfection-ready, dried plasmid DNA (reconstitute with 100 ul of water).

**Reconstitution Method:**

1. Centrifuge at 5,000xg for 5min.
2. Carefully open the tube and add 100ul of sterile water to dissolve the DNA.
3. Close the tube and incubate for 10 minutes at room temperature.
4. Briefly vortex the tube and then do a quick spin (less than 5000xg) to concentrate the liquid at the bottom.
5. Store the suspended plasmid at -20°C. The DNA is stable for at least one year from date of shipping when stored at -20°C.

**RefSeq:** [NM\\_080652.4](#)

**RefSeq Size:** 2840 bp

**RefSeq ORF:** 795 bp

**Locus ID:** 90407

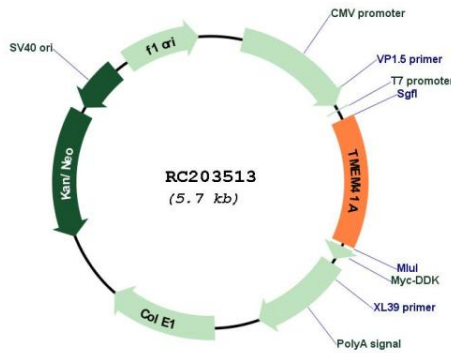
**UniProt ID:** [Q96HV5](#)

**Cytogenetics:** 3q27.2

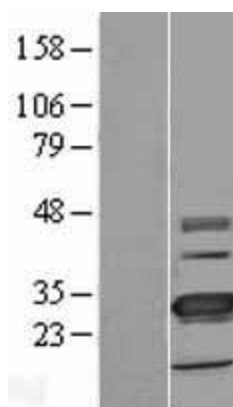
**Protein Families:** Transmembrane

**MW:** 29.7 kDa

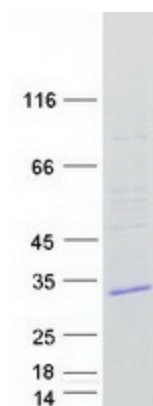
**Product images:**



Circular map for RC203513



Western blot validation of overexpression lysate (Cat# [LY409122]) using anti-DDK antibody (Cat# [TA50011-100]). Left: Cell lysates from untransfected HEK293T cells; Right: Cell lysates from HEK293T cells transfected with RC203513 using transfection reagent MegaTran 2.0 (Cat# [TT210002]).



Coomassie blue staining of purified TMEM41A protein (Cat# [TP303513]). The protein was produced from HEK293T cells transfected with TMEM41A cDNA clone (Cat# RC203513) using MegaTran 2.0 (Cat# [TT210002]).