

## Product datasheet for **RC203512**

### ANKRD40 (NM\_052855) Human Tagged ORF Clone

#### Product data:

Product Type:	Expression Plasmids
Product Name:	ANKRD40 (NM_052855) Human Tagged ORF Clone
Tag:	Myc-DDK
Symbol:	ANKRD40
Mammalian Cell Selection:	Neomycin
Vector:	pCMV6-Entry (PS100001)
E. coli Selection:	Kanamycin (25 ug/mL)
ORF Nucleotide Sequence:	>RC203512 ORF sequence Red=Cloning site Blue=ORF Green=Tags(s)

TTTTGTAATACGACTCACTATAGGGCGGCCGGGAATTCGTCGACTGGATCCGGTACCGAGGAGATCTGCC  
GCC**CGATCGCC**

ATGAACGCCCTCCTAGAGCAGAAGGAGCAGCAGGAGAGGCTGCGGGAGGCCGCGGCCTTAGGGGACATTC  
GGGAGGTGCAGAACTGGTGGAGAGCGGGTGGATGTGAACCCAAAATGAGGTCAACGGCTGGACTTG  
TTTACACTGGGCATGTAACGAAACCATGGTCAGGTGGTCTCTTACCTGTAAAAATCAGGAGCTGACAAA  
GAAATTCCTACCACAAAAGGAGAAATGCCAGTCCAGTTAACATCAAGGAGAGAAATCAGGAAGATTATGG  
GAGTGGAAAGAAGAAGATGATGATGATGATGATGATGACAACCTCCCCAGCTGAAGAAGGAGTCAGAAT  
GCCCTTTGTTCCCAACTATTTGGCCAACCCAGCCTTCCCTTTTATCTATACCCACAGCAGAGGATTCA  
GCCCAGATGCAGAATGGGGGCCCTCCACACCCCTGCATCACCCCTGCAGATGGCTCACCTCCATTGC  
TTCCCCCTGGGAACCTCCCCTGTTAGGGACCTTTCCCCGGGACCACACCTCTTTGGCACTAGTTCAGAA  
TGGTGTGTGTCGGCCCCCTCTGCCATACTCAGAACACCAGAAAGCACAAAACCGGGTCTGTTTGTGAG  
CCACCAGTGAGTCAGAGCCGCTCCCTGTTTTCTTCTGTCCCGTCCAAGCCACCAATGTCTCTGGAGCCTC  
AAAATGGGACGTATGCAGGACCAGCGCCAGCATTCCAGCCATTTTCTTCACTGGAGCATTTCCATTTAA  
TATGCAAGAGCTGGTACTCAAGGTGAGAATTCAGAACCCATCTCTCGAGAAAATGATTTTCATTGAAAT  
GAACTGGACCGACAGGAGCTCACCTACCAAGAGTTGCTCAGAGTGTGTTGCTGTGAGCTGGGTGTTAATC  
CAGATCAAGTGGAGAAGATCAGAAAGTTACCCAATACTCTGTTAAGGAAGGACAAGGATGTTGCTCGACT  
CCAAGATTTCCAGGAGCTGGAAGTGGTTCTGATGATAAGTGAAAATAATTTTCTGTTTCAGAAATGCTGCA  
TCCACACTGACTGAAAGGCCCTTGCTATAACAGGAGAGCTTCAAACTGACTTAC

**ACGCGT**ACGCGGCCGCTCGAGCAGAACTCATCTCAGAAGAGGATCTGGCAGCAAATGATATCCTGGATT  
ACAAGGATGACGACGATAAGGTTTAA



[View online »](#)

**Protein Sequence:** >RC203512 protein sequence  
Red=Cloning site Green=Tags(s)

MNALLEQKEQERLREAAALGDIREVQKLVE SGVDVNSQNEVNGWTCLHWACKRNHGQVVS YLLKSGADK  
 EILTTKGEMPVQLTSRREIRKIMGVEEEDDDDDDDNL PQLKKESEL PFVPNYLANPAFPFIYTPTAEDS  
 AQMQNGGPSTPPASPADGSPLLPPGEPPLLGTFFRDHTSLALVQNGDVSAPSAILRTPESTKPGPVCQ  
 PPVVSQSRSLFSSVPSKPPMSLEPQNGTYAGPAPAFQPF FTFGAFPFNMQELVLKVRIQNPSLRENDFIEI  
 ELDRQELTYQELLRVCCCELGVNPDQVEKIRKLPNTLLRKDKDVARLQDFQELELVLMISENNFLFRNAA  
 STLTERPCYNRRASKLTY

TRTRPLEQKLISEEDLAANDILDYKDDDDKV

**Chromatograms:** [https://cdn.origene.com/chromatograms/mk6673\\_a06.zip](https://cdn.origene.com/chromatograms/mk6673_a06.zip)

**Restriction Sites:** SgfI-MluI

**Cloning Scheme:**

Cloning sites used for ORF Shuttling:



\* The last codon before the Stop codon of the ORF

**ACCN:** NM\_052855

**ORF Size:** 1104 bp

**OTI Disclaimer:** The molecular sequence of this clone aligns with the gene accession number as a point of reference only. However, individual transcript sequences of the same gene can differ through naturally occurring variations (e.g. polymorphisms), each with its own valid existence. This clone is substantially in agreement with the reference, but a complete review of all prevailing variants is recommended prior to use. [More info](#)

**OTI Annotation:** This clone was engineered to express the complete ORF with an expression tag. Expression varies depending on the nature of the gene.

**Components:** The ORF clone is ion-exchange column purified and shipped in a 2D barcoded Matrix tube containing 10ug of transfection-ready, dried plasmid DNA (reconstitute with 100 ul of water).

**Reconstitution Method:**

1. Centrifuge at 5,000xg for 5min.
2. Carefully open the tube and add 100ul of sterile water to dissolve the DNA.
3. Close the tube and incubate for 10 minutes at room temperature.
4. Briefly vortex the tube and then do a quick spin (less than 5000xg) to concentrate the liquid at the bottom.
5. Store the suspended plasmid at -20°C. The DNA is stable for at least one year from date of shipping when stored at -20°C.

**RefSeq:** [NM\\_052855.4](#)

**RefSeq Size:** 4169 bp

**RefSeq ORF:** 1107 bp

**Locus ID:** 91369

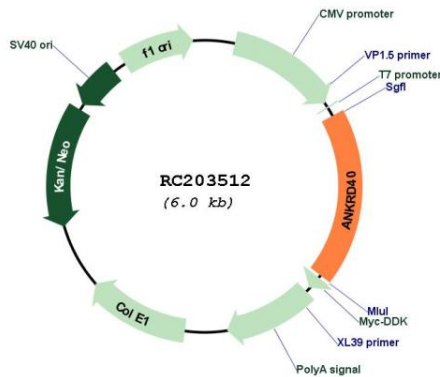
**UniProt ID:** [Q6AI12](#)

**Cytogenetics:** 17q21.33

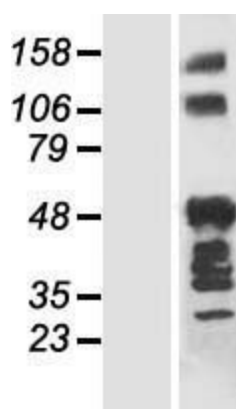
**Domains:** ANK

**MW:** 41.1 kDa

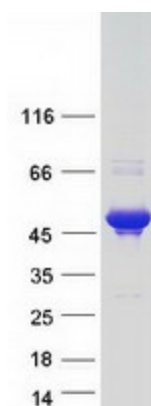
**Product images:**



Circular map for RC203512



Western blot validation of overexpression lysate (Cat# [LY409432]) using anti-DDK antibody (Cat# [TA50011-100]). Left: Cell lysates from untransfected HEK293T cells; Right: Cell lysates from HEK293T cells transfected with RC203512 using transfection reagent MegaTran 2.0 (Cat# [TT210002]).



Coomassie blue staining of purified ANKRD40 protein (Cat# [TP303512]). The protein was produced from HEK293T cells transfected with ANKRD40 cDNA clone (Cat# RC203512) using MegaTran 2.0 (Cat# [TT210002]).