

Product datasheet for RC203511

ERp19 (TXNDC12) (NM_015913) Human Tagged ORF Clone

Product data:

Product Type:	Expression Plasmids
Product Name:	ERp19 (TXNDC12) (NM_015913) Human Tagged ORF Clone
Tag:	Myc-DDK
Symbol:	ERp19
Synonyms:	AG1; AGR1; ERP16; ERP18; ERP19; hAG-1; hTLP19; PDIA16; TLP19
Mammalian Cell Selection:	Neomycin
Vector:	pCMV6-Entry (PS100001)
E. coli Selection:	Kanamycin (25 ug/mL)
ORF Nucleotide Sequence:	>RC203511 ORF sequence Red=Cloning site Blue=ORF Green=Tags(s)

TTTTGTAATACGACTCACTATAGGGCGGCCGGAATTCGTCGACTGGATCCGGTACCGAGGAGATCTGCC
 GCCCGCATCGCC

ATGGAGACGCGGCTCGTCTCGGGGCCACCTGTTTCTGGGCTTCAGTTTCCTGCTCCTCGTCATCTCTT
 CTGATGGACATAATGGGCTTGAAAGGGTTTGGAGATCATATTCATTGGAGGACACTGGAAGATGGGAA
 GAAAGAAGCAGCTGCCAGTGGACTGCCCTGATGGTGATTATTCATAAATCCTGGTGTGGAGCTTGCAA
 GCTCTAAAGCCCAATTTGCAGAATCTACGAAATTTAGAACTCTCCATAATTTGTTATGGTAAATC
 TTGAGGATGAAGAGGAACCCAAACATGAAGATTTAGCCCTGACGGGGTTATATCCACGAATCCTTTT
 TCTGGATCCAGTGGCAAGGTGCATCCTGAAATCATCAATGAGAATGGAAACCCAGCTACAAGTATTTT
 TATGTCAGTGCCGAGCAAGTTGTTAGGGGATGAAGGAAGCTCAGGAAAGGCTGACGGGTGATGCCTTCA
 GAAAGAAACATCTTGAAGATGAATTG

ACGCGTACGCGGCCGCTCGAGCAGAACTCATCTCAGAAGAGGATCTGGCAGCAAATGATATCCTGGATT
 ACAAGGATGACGACGATAAGGTTTAA

Protein Sequence:	>RC203511 protein sequence Red=Cloning site Green=Tags(s)
-------------------	--

METRPLGATCLLGFSLLLVISSDGHNLGKGFGDHWRLETDGKKEAAASGLPLMVIHKS WC GACK
 ALKPKFAESTEISELSHNFVMVNLEDEEPPKHEDFSPDGGYIPRILFLDPSGKVHPEIINENG NPSYKYF
 YVSAEQVVQGMKEAQERLTGDAFRKKHLEDEL

TRTRPLEQKLISEEDLAANDILDYKDDDDKV

Chromatograms:	https://cdn.origene.com/chromatograms/mk6578_b02.zip
----------------	---


[View online »](#)

Restriction Sites: SgfI-MluI

Cloning Scheme:



ACCN: NM_015913

ORF Size: 516 bp

OTI Disclaimer: The molecular sequence of this clone aligns with the gene accession number as a point of reference only. However, individual transcript sequences of the same gene can differ through naturally occurring variations (e.g. polymorphisms), each with its own valid existence. This clone is substantially in agreement with the reference, but a complete review of all prevailing variants is recommended prior to use. [More info](#)

OTI Annotation: This clone was engineered to express the complete ORF with an expression tag. Expression varies depending on the nature of the gene.

Components: The ORF clone is ion-exchange column purified and shipped in a 2D barcoded Matrix tube containing 10ug of transfection-ready, dried plasmid DNA (reconstitute with 100 ul of water).

Reconstitution Method:

1. Centrifuge at 5,000xg for 5min.
2. Carefully open the tube and add 100ul of sterile water to dissolve the DNA.
3. Close the tube and incubate for 10 minutes at room temperature.
4. Briefly vortex the tube and then do a quick spin (less than 5000xg) to concentrate the liquid at the bottom.
5. Store the suspended plasmid at -20°C. The DNA is stable for at least one year from date of shipping when stored at -20°C.

RefSeq: [NM_015913.4](#)

RefSeq Size: 2412 bp

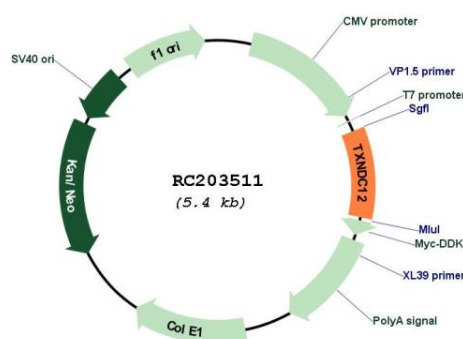
RefSeq ORF: 519 bp

Locus ID: 51060

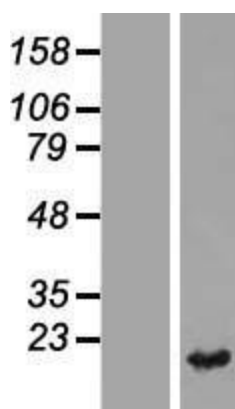
UniProt ID: [O95881](#)

Cytogenetics:	1p32.3
Protein Families:	Druggable Genome, Transmembrane
Protein Pathways:	Glutathione metabolism
MW:	19.2 kDa
Gene Summary:	This gene encodes a member of the thioredoxin superfamily. Members of this family are characterized by a conserved active motif called the thioredoxin fold that catalyzes disulfide bond formation and isomerization. This protein localizes to the endoplasmic reticulum and has a single atypical active motif. The encoded protein is mainly involved in catalyzing native disulfide bond formation and displays activity similar to protein-disulfide isomerases. This protein may play a role in defense against endoplasmic reticulum stress. Alternate splicing results in both coding and non-coding variants. [provided by RefSeq, Mar 2012]

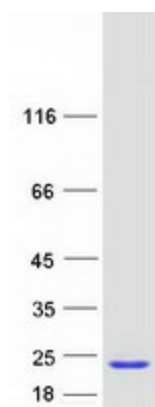
Product images:



Circular map for RC203511



Western blot validation of overexpression lysate (Cat# [LY414316]) using anti-DDK antibody (Cat# [TA50011-100]). Left: Cell lysates from untransfected HEK293T cells; Right: Cell lysates from HEK293T cells transfected with RC203511 using transfection reagent MegaTran 2.0 (Cat# [TT210002]).



Coomassie blue staining of purified TXNDC12 protein (Cat# [TP303511]). The protein was produced from HEK293T cells transfected with TXNDC12 cDNA clone (Cat# RC203511) using MegaTran 2.0 (Cat# [TT210002]).