

Product datasheet for **RC203505**

Clathrin light chain (CLTA) (NM_001833) Human Tagged ORF Clone

Product data:

Product Type:	Expression Plasmids
Product Name:	Clathrin light chain (CLTA) (NM_001833) Human Tagged ORF Clone
Tag:	Myc-DDK
Symbol:	Clathrin light chain
Synonyms:	LCA
Mammalian Cell Selection:	Neomycin
Vector:	pCMV6-Entry (PS100001)
E. coli Selection:	Kanamycin (25 ug/mL)
ORF Nucleotide Sequence:	>RC203505 ORF sequence Red=Cloning site Blue=ORF Green=Tags(s)

TTTGTAAACGACTCACTATAGGGCGGCCGGAATTCGTCGACTGGATCCGGTACCGAGGAGATCTGCC
 GCC**CGATCGCC**

ATGGCTGAGCTGGATCCGTTCCGGCGCCCTGCCGGCGCCCTGGCGGTCCCGCGCTGGGGAACGGAGTGG
 CCGGCGCCGGCGAAGAAGACCCGGCTGCGGCCTTCTTGCGCAGCAAGAGAGCGAGATTGCGGGCATCGA
 GAACGACGAGGCCTTCGCCATCCTGGACGGCGGCCCGCCCGGCCAGCCGACGGCGAGCCGCCGGG
 GGTCCGGATGCTGTTGATGGAGTAATGAATGGTGAATACTACCAGGAAAGTAATGGTCCAACAGACAGTT
 ATGCAGCTATTTACAAGTGGATCGATTGCAGTCAGAGCCTGAAAGTATCCGTAAATGGAGAGAAGAACA
 AATGGAACGCTTGAAGCCCTTGATGCCAATTCTCGGAAGCAAGAAGCAGAGTGGAAAGAAAAGGCAATA
 AAGGAGCTAGAAGAATGGTATGCAAGACAGGACGAGCAGCTACAGAAAACAAAGCAAACAACAGGGCAG
 CAGAAGAAGCCTTTGTAATGACATTGACGAGTCGTCCCAGGCACTGAGTGGGAACGGGTGGCCCGGCT
 GTGTGACTTTAACCCCAAGTCTAGCAAGCAGGCCAAAGATGTCTCCCGCATGCGCTCAGTCCTCATCTCC
 CTAAGCAGGCCCGCTGGTGCAC

ACGCGTACGCGGCCGCTCGAGCAGAACTCATCTCAGAAGAGGATCTGGCAGCAAATGATATCCTGGATT
 ACAAGGATGACGACGATAAGGTTTAA


[View online »](#)

Protein Sequence: >RC203505 protein sequence
 Red=Cloning site Green=Tags(s)

MAELDPFGAPAGAPGGPALGNVAGAGEEDPAAFLAQQSEIAGIENDEAFAILDGGAPGPQPHGEP
 GPDAVDGVMNGEYYQESNGPTDSYAAISQVDRLQSEPEIIRKWREEQMERLEALDANSRKQEA
 KELEEWYARQDEQLQKTKANNRAEEAFVNDIDESSPGTEWVARLCDFNPKSSKQAKDYSRMR
 SVLIS LKQAPLVH

TRTRPLEQKLISEEDLAANDILDYKDDDDKV

Chromatograms: https://cdn.origene.com/chromatograms/mk6056_b03.zip

Restriction Sites: SgfI-MluI

Cloning Scheme:



ACCN: NM_001833

ORF Size: 654 bp

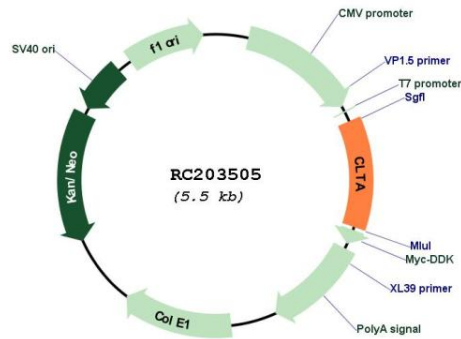
OTI Disclaimer: The molecular sequence of this clone aligns with the gene accession number as a point of reference only. However, individual transcript sequences of the same gene can differ through naturally occurring variations (e.g. polymorphisms), each with its own valid existence. This clone is substantially in agreement with the reference, but a complete review of all prevailing variants is recommended prior to use. [More info](#)

OTI Annotation: This clone was engineered to express the complete ORF with an expression tag. Expression varies depending on the nature of the gene.

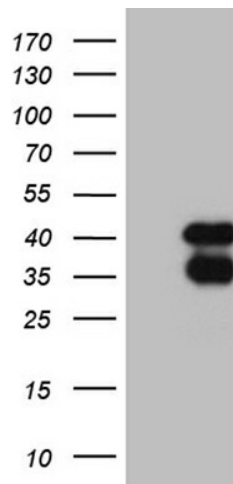
Components: The ORF clone is ion-exchange column purified and shipped in a 2D barcoded Matrix tube containing 10ug of transfection-ready, dried plasmid DNA (reconstitute with 100 ul of water).

Reconstitution Method:	<ol style="list-style-type: none"> 1. Centrifuge at 5,000xg for 5min. 2. Carefully open the tube and add 100ul of sterile water to dissolve the DNA. 3. Close the tube and incubate for 10 minutes at room temperature. 4. Briefly vortex the tube and then do a quick spin (less than 5000xg) to concentrate the liquid at the bottom. 5. Store the suspended plasmid at -20°C. The DNA is stable for at least one year from date of shipping when stored at -20°C.
Note:	Plasmids are not sterile. For experiments where strict sterility is required, filtration with 0.22um filter is required.
RefSeq:	<u>NM_001833.4</u>
RefSeq Size:	1156 bp
RefSeq ORF:	657 bp
Locus ID:	1211
UniProt ID:	<u>P09496</u>
Cytogenetics:	9p13.3
Domains:	Clathrin_lg_ch
Protein Pathways:	Endocytosis, Huntington's disease, Lysosome
MW:	23.7 kDa
Gene Summary:	Clathrin is a large, soluble protein composed of heavy and light chains. It functions as the main structural component of the lattice-type cytoplasmic face of coated pits and vesicles which entrap specific macromolecules during receptor-mediated endocytosis. This gene encodes one of two clathrin light chain proteins which are believed to function as regulatory elements. Alternative splicing results in multiple transcript variants. Related pseudogenes have been identified on chromosomes 8 and 12. [provided by RefSeq, May 2010]

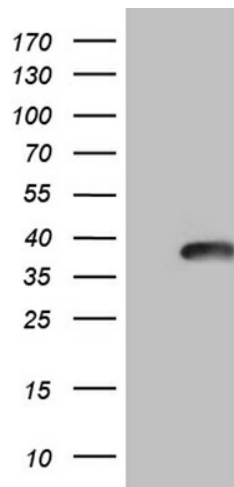
Product images:



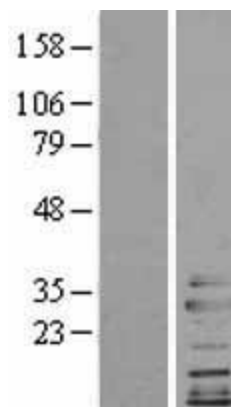
Circular map for RC203505



HEK293T cells were transfected with the pCMV6-ENTRY control (Cat# [PS100001], Left lane) or pCMV6-ENTRY CLTA (Cat# RC203505, Right lane) cDNA for 48 hrs and lysed. Equivalent amounts of cell lysates (5 ug per lane) were separated by SDS-PAGE and immunoblotted with anti-CLTA (Cat# [TA809578])(1:2000). Positive lysates [LY400696] (100ug) and [LC400696] (20ug) can be purchased separately from OriGene.



HEK293T cells were transfected with the pCMV6-ENTRY control (Left lane) or pCMV6-ENTRY CLTA (RC203505, Right lane) cDNA for 48 hrs and lysed. Equivalent amounts of cell lysates (5 ug per lane) were separated by SDS-PAGE and immunoblotted with anti-CLTA (1:2000) ([TA809631]). Positive lysates [LY400696] (100ug) and [LC400696] (20ug) can be purchased separately from OriGene.



Western blot validation of overexpression lysate (Cat# [LY400696]) using anti-DDK antibody (Cat# [TA50011-100]). Left: Cell lysates from untransfected HEK293T cells; Right: Cell lysates from HEK293T cells transfected with RC203505 using transfection reagent MegaTran 2.0 (Cat# [TT210002]).