

Product datasheet for **RC203501**

SCRN2 (NM_138355) Human Tagged ORF Clone

Product data:

Product Type:	Expression Plasmids
Product Name:	SCRN2 (NM_138355) Human Tagged ORF Clone
Tag:	Myc-DDK
Symbol:	SCRN2
Synonyms:	Ses2
Mammalian Cell Selection:	Neomycin
Vector:	pCMV6-Entry (PS100001)
E. coli Selection:	Kanamycin (25 ug/mL)



[View online »](#)

ORF Nucleotide Sequence:

>RC203501 ORF sequence
 Red=Cloning site Blue=ORF Green=Tags(s)

TTTTGTAATACGACTCACTATAGGGCGGCCGGAATTCGTCGACTGGATCCGGTACCGAGGAGATCTGCC
 GCC**CGGATCGCC**

ATGGCGTCGTCGAGCCCTGACTCCCATGTTCTCGACTGCTTTGTCTCCGTGCCCGCCGCTCAGCCA
 TCCCGGCTGTGATCTTTGCCAAGAACTCGGACCGACCCCGGACGAGGTGCAGGAGGTGGTGTTCCTCC
 CGCAGGCACTCACACTCTGGGAGCCGGCTCCAGTGACCTACATTGAAGTGAACAGGTGTGAAGACG
 CACGCTGTGATTCTGAGCCGCTCTTCTGGCTATGGGGGCTGAGATGGGCGCAACGAGCATGGTGTCT
 GCATTGGCAACGAGGCTGTGTGGACGAAGGAGCCAGTTGGGGAGGGGAAGCCCTGCTGGGCATGGACCT
 ACTCAGGCTGGCTTTGGAACGGAGCAGCTGCCAGGAGGCTTGCATGTGATCACAGGGTTACTGGAG
 CACTATGGGCAGGGGGCAACTGCCTGGAGGATGCTGCGCCATTCTCTACCATAGCACCTTCTGCTGG
 CTGACCGCACTGAGGCGTGGTGTGGAGACAGCTGGGAGGCTCTGGGCTGCACAGAGGATCCAGGAGGG
 GGCCCGCAACATCTCAACCAGCTGAGCATTGGCACGGACATCTCGGCCAACACCCGGAGCTGCGGACT
 CATGCCAAGGCCAAGGGCTGGTGGGATGGGAGGGTGCCTTTGACTTTGCTCAGATCTTCTCCCTGACCC
 AGCAGCCTGTGCGCATGGAGGCTGCCAAGGCCCGCTCCAGGCAGGGCGGGAGCTGCTGCGGCAACGGCA
 AGGGGGCATCACGGCAGAGGTGATGATGGGCATCCTCAGAGACAAGGAGAGTGGTATCTGTATGGACTCG
 GGAGGCTTTGCGACCACGGCCAGCATGGTGTCTGTCTGCCCCAGGATCCACGCAGCCCTGCGTGCCT
 TTCTTACCGCCACGCCAGACCATCCAGGTCTGTGTTCAAACCTTTCATCTTCGGGGTGGGGGTGGCCCA
 GGCCCCCAGGTGCTGTCCCCACTTTTGGAGCACAAGACCCTGTTCCGACCCCTGCCCGATTCCAGACT
 CAGGTAGATCGTCGGCATAACCTCTACCGTGGACACCAGGCAGCCCTGGGGCTGATGGAGAGAGATCAGG
 ATCGGGGGCAGCAGCTCCAGCAGAAACAGCAGGATCTGGAGCAGGAAGGCCTCGAGGCCACACAGGGGCT
 GCTGGCCGGCGAGTGGGCCCCACCCCTCTGGGAGCTGGGACGCTCTTCCAGGCCCTCGTGAAGAGGGAG
 AGCCAGGCTTATGCG

ACGCGTACGCGGCCGCTCGAGCAGAACTCATCTCAGAAGAGGATCTGGCAGCAAATGATATCCTGGATT
 ACAAGGATGACGACGATAAGGTTTAA

Protein Sequence:

>RC203501 protein sequence
 Red=Cloning site Green=Tags(s)

MASSSPDPCSCDCFVSVPPASAIPAVIFAKNSDRPRDEVQEVVFPAGTHTPGSRLQCTYIEVEQVSKT
 HAVILSRPSWLWGAEMGANEHGVCIGNEAVWTKPEVGEALLGMDLLRLALERSSSAQEALHVITLLE
 HYGQGGNLEDAAPFSYHSTFLLADRTEAWVLETAGRLWAAQRIQEGARNISNQLSIGTDISAQHPRLRT
 HAQAKGWWDGQGAFDFAQIFSLTQQPVRMEAARKRFQAGRELLRQRGGITAEVMMGILRDKESGICMDS
 GGFRTTASMVSVLPQDPTQPCVHFLTATPDPSRSVFKPFIFGVGVAQAPQVLSPTFGAQPVRTLPFRQT
 QVDRRHLYRGHQAALGLMERDQDRGQQLQQKQDLEQGLEATQGLLAGEWAPPLWELGSLFQAFVKRE
 SQAYA

TRTRPLEQKLISEEDLAANDILDYKDDDDKV

Chromatograms:

https://cdn.origene.com/chromatograms/mk6666_f04.zip

Restriction Sites:

Sgfl-Mlul

Cloning Scheme:


ACCN: NM_138355

ORF Size: 1275 bp

OTI Disclaimer: The molecular sequence of this clone aligns with the gene accession number as a point of reference only. However, individual transcript sequences of the same gene can differ through naturally occurring variations (e.g. polymorphisms), each with its own valid existence. This clone is substantially in agreement with the reference, but a complete review of all prevailing variants is recommended prior to use. [More info](#)

OTI Annotation: This clone was engineered to express the complete ORF with an expression tag. Expression varies depending on the nature of the gene.

Components: The ORF clone is ion-exchange column purified and shipped in a 2D barcoded Matrix tube containing 10ug of transfection-ready, dried plasmid DNA (reconstitute with 100 ul of water).

Reconstitution Method:

1. Centrifuge at 5,000xg for 5min.
2. Carefully open the tube and add 100ul of sterile water to dissolve the DNA.
3. Close the tube and incubate for 10 minutes at room temperature.
4. Briefly vortex the tube and then do a quick spin (less than 5000xg) to concentrate the liquid at the bottom.
5. Store the suspended plasmid at -20°C. The DNA is stable for at least one year from date of shipping when stored at -20°C.

RefSeq: [NM_138355.4](#)

RefSeq Size: 1582 bp

RefSeq ORF: 1278 bp

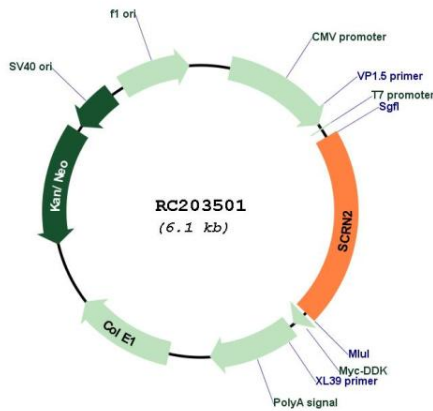
Locus ID: 90507

UniProt ID: [Q96FV2](#)

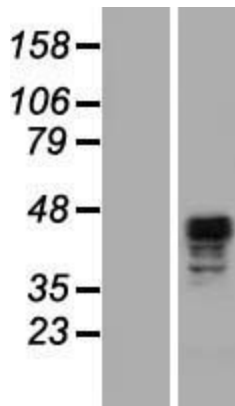
Cytogenetics: 17q21.32

MW: 46.6 kDa

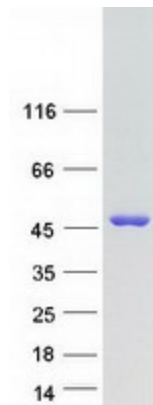
Product images:



Circular map for RC203501



Western blot validation of overexpression lysate (Cat# [LY408627]) using anti-DDK antibody (Cat# [TA50011-100]). Left: Cell lysates from untransfected HEK293T cells; Right: Cell lysates from HEK293T cells transfected with RC203501 using transfection reagent MegaTran 2.0 (Cat# [TT210002]).



Coomassie blue staining of purified SCR2 protein (Cat# [TP303501]). The protein was produced from HEK293T cells transfected with SCR2 cDNA clone (Cat# RC203501) using MegaTran 2.0 (Cat# [TT210002]).