

## Product datasheet for **RC203494**

### UAP1 (NM\_003115) Human Tagged ORF Clone

#### Product data:

Product Type:	Expression Plasmids
Product Name:	UAP1 (NM_003115) Human Tagged ORF Clone
Tag:	Myc-DDK
Symbol:	UAP1
Synonyms:	AGX; AGX1; AGX2; SPAG2
Mammalian Cell Selection:	Neomycin
Vector:	pCMV6-Entry (PS100001)
E. coli Selection:	Kanamycin (25 ug/mL)



[View online »](#)

**ORF Nucleotide Sequence:**

>RC203494 ORF sequence  
 Red=Cloning site Blue=ORF Green=Tags(s)

TTTTGTAATACGACTCACTATAGGGCGGCCGGGAATTCGTCGACTGGATCCGGTACCGAGGAGATCTGCC  
 GCC**CGCATCGCC**

ATGAACATTAATGACCTCAAACCTCACGTTGTCCAAAGCTGGGCAAGAGCACCTACTACGTTTCTGGAATG  
 AGCTTGAAGAAGCCCAACAGGTAGAAGTTTATGCAGAGCTCCAGGCCATGAAGTTTGAGGAGCTGAAGTT  
 CTTTTTCCAAAAGGCCATTGAAGGTTTTAACAGTCTTCTTACCAAAAAGAAATGTGGATGCACGAATGGAA  
 CCTGTGCCTCGAGAGGTATTAGGCAGTGTACAAGGGATCAAGATCAGCTCCAGGCCTGGGAAAAGTGAAG  
 GACTTTTCCAGATTTCTCAGAATAAAGTAGCAGTTCTTCTTAGCTGGTGGCAGGGGACAAGACTCGG  
 CGTTGCATATCCTAAGGGGATGTATGATGTTGGTTTCCATCCCCTAAGACACTTTTTAGATTCAAGCA  
 GAGCGTATCCTGAAGCTACAGCAGGTTGCTGAAAAATATTATGGCAACAAATGCATTATCCATGGTATA  
 TAATGACCAGTGGCAGAACAATGGAATCTACAAGGAGTCTTCCACCAAGCACAAGTACTTTGGTTTAAA  
 AAAAGAGAATGTAATCTTTTTTCCAGCAAGGAATGCTCCCCGCCATGAGTTTTGATGGGAAAATTATTTTG  
 GAAGAGAAGAACAAGTTTCTATGGCTCCAGATGGGAATGGTGGTCTTTATCGGGCACTTGCAGCCGAGA  
 ATATTGTGGAGGATATGGAGCAAAGAGGCATTTGGAGCATTATGTCTATTGTGTGACAACATATTAGT  
 AAAAGTGGCAGACCCACGGTTCATTGGATTTTGCATTCAGAAAGGAGCAGACTGTGGAGCAAAGTGGTA  
 GAGAAAACGAACCCTACAGAACCAGTTGGAGTGGTTTCCGAGTGGATGGAGTTTACCAGGTGGTAGAAT  
 ATAGTGAGATTTCCCTGGCAACAGCTCAAAAACGAAGCTCAGACGGACGACTGCTGTTCAATGCGGGGAA  
 CATTGCCAACCATTTCTCACTGTACCATTTCTGAGAGATGTTGTCAATGTTTATGAACCTCAGTTGCAG  
 CACCATGTGGCTCAAAAAGAAGATTCCTTATGTGGATACCAAGGACAGTTAATTAAGCCAGACAAACCCA  
 ATGGAATAAAGATGGAAAAATTTGTCTTTGACATCTTCCAGTTTGCAAAGAAGTTTGTGGTATATGAAGT  
 ATTGCGAGAAGATGAGTTTTCCCACTAAAGAATGCTGATAGTCAGAATGGGAAAAGACAACCCCTACTACT  
 GCAAGGCATGCTTTGATGTCCTTCATCATTGCTGGTCCCTCAATGCAGGGGGCCATTTCTAGATGAAA  
 ATGGCTCTCGCCTTCCAGCAATCCCCGCTTGAAGGATGCCAATGATGTACCAATCCAATGTGAAATCTC  
 TCCTCTTATCTCTATGCTGGAGAAGGATTAGAAAAGTTATGTGGCAGATAAAGAATTCATGCACCTCTA  
 ATCATCGATGAGAATGGAGTTCATGAGCTGGTAAAAATGGTATT

**ACGCGT**ACGCGGCCGCTCGAGCAGAAACTCATCTCAGAAGAGGATCTGGCAGCAATGATATCTGGATT  
 ACAAGGATGACGACGATAAGGTTTAA

**Protein Sequence:**

>RC203494 protein sequence  
 Red=Cloning site Green=Tags(s)

MNINDLKLTL SKAGQEHLRFWNELEEAQQVELY AELQAMNFEELNFFFQKAIIEGFNQSSYQKNVDARME  
 PVPREVLGSATRDQDLQAWSEGLFQISQNKVAVLLLAGGQGTRLGVA YPKGMYDVGLPSRKTLFQIQAE  
 ERILKLQVAEKYGNKCIIPWYIMTSGRTMESTKEFFTKHKYFGLKKENVIFFQQGMLPAMSFQKIIIL  
 EEKNKVS MAPDNGGLYRALAAQNI VEDMEQRGIWSIHVYCVDNILVKVADPRF IGFCIQKGADCGAKVV  
 EKTNPTEPVGVVCRVDGVYQVVEYSEISLATAQKRSSDGRLLFNAGNIANHFFTVPFLRDVNVNVEPQLQ  
 HHVAQKKIPYVDTQGGQLIKPKDPNGIKMEKFVDFIQFAKKFVVEVLEDEF SPLKNADSQNGKDNPTT  
 ARHALMSLHHCWV LNAGGHFIDENGSR LPAIPRLKDANDVPIQCEISPLISYAGEGLESYVADKEFHAPL  
 IIDENGVELVKNGI

**TRTRPLEQKLI**SEEDLAANDILDYKDDDDKV

**Chromatograms:**

[https://cdn.origene.com/chromatograms/mk6566\\_d10.zip](https://cdn.origene.com/chromatograms/mk6566_d10.zip)

**Restriction Sites:**

Sgfl-Mlul

**Cloning Scheme:**


**ACCN:** NM\_003115

**ORF Size:** 1515 bp

**OTI Disclaimer:** The molecular sequence of this clone aligns with the gene accession number as a point of reference only. However, individual transcript sequences of the same gene can differ through naturally occurring variations (e.g. polymorphisms), each with its own valid existence. This clone is substantially in agreement with the reference, but a complete review of all prevailing variants is recommended prior to use. [More info](#)

**OTI Annotation:** This clone was engineered to express the complete ORF with an expression tag. Expression varies depending on the nature of the gene.

**Components:** The ORF clone is ion-exchange column purified and shipped in a 2D barcoded Matrix tube containing 10ug of transfection-ready, dried plasmid DNA (reconstitute with 100 ul of water).

**Reconstitution Method:**

1. Centrifuge at 5,000xg for 5min.
2. Carefully open the tube and add 100ul of sterile water to dissolve the DNA.
3. Close the tube and incubate for 10 minutes at room temperature.
4. Briefly vortex the tube and then do a quick spin (less than 5000xg) to concentrate the liquid at the bottom.
5. Store the suspended plasmid at -20°C. The DNA is stable for at least one year from date of shipping when stored at -20°C.

**Note:** Plasmids are not sterile. For experiments where strict sterility is required, filtration with 0.22um filter is required.

**RefSeq:** [NM\\_003115.3](#), [NP\\_003106.2](#)

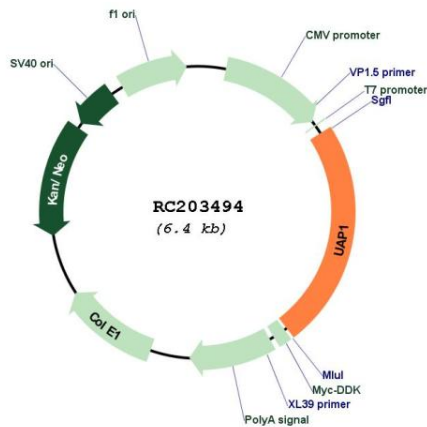
**RefSeq Size:** 2344 bp

**RefSeq ORF:** 1518 bp

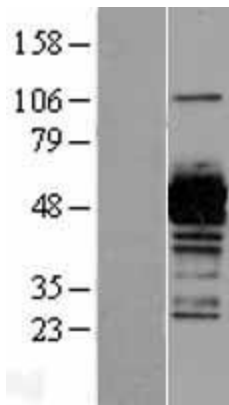
**Locus ID:** 6675

**UniProt ID:** [Q16222](#)  
**Cytogenetics:** 1q23.3  
**Domains:** UDPGP  
**Protein Pathways:** Amino sugar and nucleotide sugar metabolism, Metabolic pathways  
**MW:** 57.1 kDa  
**Gene Summary:** Converts UTP and GlcNAc-1-P into UDP-GlcNAc, and UTP and GalNAc-1-P into UDP-GalNAc. Isoform AGX1 has 2 to 3 times higher activity towards GalNAc-1-P, while isoform AGX2 has 8 times more activity towards GlcNAc-1-P.[UniProtKB/Swiss-Prot Function]

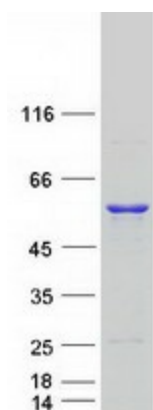
### Product images:



Circular map for RC203494



Western blot validation of overexpression lysate (Cat# [LY418892]) using anti-DDK antibody (Cat# [TA50011-100]). Left: Cell lysates from untransfected HEK293T cells; Right: Cell lysates from HEK293T cells transfected with RC203494 using transfection reagent MegaTran 2.0 (Cat# [TT210002]).



Coomassie blue staining of purified UAP1 protein (Cat# [TP303494]). The protein was produced from HEK293T cells transfected with UAP1 cDNA clone (Cat# RC203494) using MegaTran 2.0 (Cat# [TT210002]).