

## Product datasheet for **RC203489**

### CREB3 (NM\_006368) Human Tagged ORF Clone

#### Product data:

Product Type:	Expression Plasmids
Product Name:	CREB3 (NM_006368) Human Tagged ORF Clone
Tag:	Myc-DDK
Symbol:	CREB3
Synonyms:	LUMAN; LZIP; sLZIP
Mammalian Cell Selection:	Neomycin
Vector:	pCMV6-Entry (PS100001)
E. coli Selection:	Kanamycin (25 ug/mL)
ORF Nucleotide Sequence:	>RC203489 ORF sequence Red=Cloning site Blue=ORF Green=Tags(s)

TTTTGTAATACGACTCACTATAGGGCGCCGGGAATTCGTCGACTGGATCCGGTACCGAGGAGATCTGCC  
GCC**CGATCGCC**

ATGGAGCTGGAATTGGATGCTGGTGACCAAGACCTGCTGGCCTTCTGCTAGAGGAAAGTGGAGATTTGG  
GGACGGCACCCGATGAGGCCGTGAGGGCCCCACTGGACTGGGCGTGCCGCTTTCTGAGGTACCGAGCGA  
CTGGGAAGTAGATGATTTGCTGTGCTCCCTGCTGAGTCCCCAGCGTCGTTGAACATTCTCAGCTCCTCC  
AACCCCTGCCTTGTCCACCATGACCACACCTACTCCCTCCCACGGGAACTGTCTCTATGGATCTAGAGA  
GTGAGAGCTGTAGAAAAGAGGGGACCCAGATGACTCCACAGCATATGGAGGAGCTGGCAGAGCAGGAGAT  
TGCTAGGCTAGTACTGACAGATGAGGAGAAGAGTCTATTGGAGAAGGAGGGGCTTATTCTGCCTGAGACA  
TTCTCTCACTAAGACAGAGGAACAAATCTGAAACGTGTGCGGAGGAAGATTCGAAATAAAGATCTG  
CTCAAGAGAGCCGAGGAAAAAGAAGGTGTATGTTGGGGGTTTAGAGAGCAGGGTCTTGAATACACAGC  
CCAGAATATGGAGCTTCAGAACAAGTACAGCTTCTGGAGGAACAGAATTTGTCCCTTCTAGATCAACTG  
AGGAACTCCAGGCCATGGTGATTGAGATATCAAACAAAACCAGCAGCAGCAGCACCTGCATCTTGGTCC  
TACTAGTCTCCTTCTGCCTCCTCTGTACCTGCTATTTACTCCTCTGACACAAGGGGGAGCCTGCCAGC  
TGAGCATGGAGTGTGTCCCGCCAGCTTCGTGCCCTCCCAGTGAGGACCCTTACCAGCTGGAGCTGCCT  
GCCCTGCAGTCAGAAGTGCCGAAAGACAGCACACACCAGTGGTTGGACGGCTCAGACTGTGACTCCAGG  
CCCCTGGCAACACTTCTGCCTGCTGCATTACATGCCTCAGGCTCCCAGTGACAGCCTCCCCTGGAGTG  
GCCATTCCCTGACCTCTTCTCAGAGCCTCTCTGCCGAGGTCCCATCCTCCCCTGCAGGCAAATCTCACA  
AGGAAGGGAGGATGGCTTCTACTGCTAGCCCCTGTCAATTTGCAGGACAGATACTCAGGC

**ACGCGT**ACGCGGCCGCTCGAGCAGAACTCATCTCAGAAGAGGATCTGGCAGCAAATGATATCCTGGATT  
ACAAGGATGACGACGATAAGGTTTAA



[View online »](#)



**Reconstitution Method:**

1. Centrifuge at 5,000xg for 5min.
2. Carefully open the tube and add 100ul of sterile water to dissolve the DNA.
3. Close the tube and incubate for 10 minutes at room temperature.
4. Briefly vortex the tube and then do a quick spin (less than 5000xg) to concentrate the liquid at the bottom.
5. Store the suspended plasmid at -20°C. The DNA is stable for at least one year from date of shipping when stored at -20°C.

**RefSeq:** [NM\\_006368.2](#)

**RefSeq Size:** 1868 bp

**RefSeq ORF:** 1116 bp

**Locus ID:** 10488

**UniProt ID:** [O43889](#)

**Cytogenetics:** 9p13.3

**Domains:** BRLZ

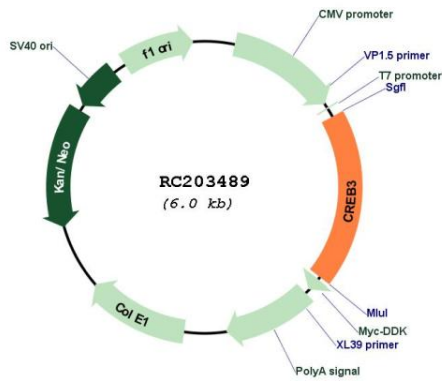
**Protein Families:** Transcription Factors

**Protein Pathways:** Huntington's disease, Melanogenesis, Prostate cancer

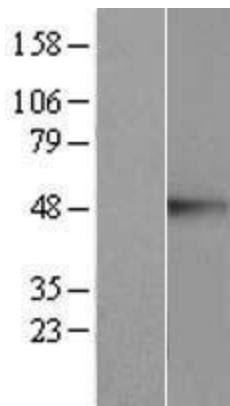
**MW:** 41.4 kDa

**Gene Summary:** This gene encodes a transcription factor that is a member of the leucine zipper family of DNA binding proteins. This protein binds to the cAMP-response element and regulates cell proliferation. The protein interacts with host cell factor C1, which also associates with the herpes simplex virus (HSV) protein VP16 that induces transcription of HSV immediate-early genes. This protein and VP16 both bind to the same site on host cell factor C1. It is thought that the interaction between this protein and host cell factor C1 plays a role in the establishment of latency during HSV infection. This protein also plays a role in leukocyte migration, tumor suppression, and endoplasmic reticulum stress-associated protein degradation. Additional transcript variants have been identified, but their biological validity has not been determined.[provided by RefSeq, Nov 2009]

Product images:



Circular map for RC203489



Western blot validation of overexpression lysate (Cat# [LY416687]) using anti-DDK antibody (Cat# [TA50011-100]). Left: Cell lysates from untransfected HEK293T cells; Right: Cell lysates from HEK293T cells transfected with RC203489 using transfection reagent MegaTran 2.0 (Cat# [TT210002]).