

## Product datasheet for **RC203486**

### **POLR1C (NM\_203290) Human Tagged ORF Clone**

#### Product data:

Product Type:	Expression Plasmids
Product Name:	POLR1C (NM_203290) Human Tagged ORF Clone
Tag:	Myc-DDK
Symbol:	POLR1C
Synonyms:	AC40; HLD11; RPA5; RPA39; RPA40; RPAC1; RPC40; TCS3
Mammalian Cell Selection:	Neomycin
Vector:	pCMV6-Entry (PS100001)
E. coli Selection:	Kanamycin (25 ug/mL)
ORF Nucleotide Sequence:	>RC203486 ORF sequence Red=Cloning site Blue=ORF Green=Tags(s)

TTTTGTAATACGACTCACTATAGGGCGGCCGGAATTCGTCGACTGGATCCGGTACCGAGGAGATCTGCC  
GCC**CGGATCGCC**

ATGGCGGCTTCTCAGGCGGTGGAGGAAATGCGGAGCCGCGTGGTTCTGGGGGAGTTGGGGTTTCGCAATG  
TCCATACTACTGACTTTCCCGGTAATATTCCGGTTATGATGATGCCTGGGACCAGGACCGCTTCGAGAA  
GAATTTCCGTGTGGATGTAGTACACATGGATGAAAACACTGGAGTTTGACATGGTGGGAATTGACGCA  
GCCATTGCCAATGCTTTTCGACGAATTCTGCTAGCTGAGGTGCCAACTATGGCTGTGGAGAAGGTCTGG  
TGTACAATAATACATCCATTGTTTCAGGATGAGATTCTTGCTCACCGTCTGGGGCTCATTCCCATTCATGC  
TGATCCCCGTCTTTTGTAGTATCGGAACCAAGGAGATGAAGAAGGCACAGAGATAGATACTCTACAGTTT  
CGTCTCCAGGTCAGATGCACTCGGAACCCCATGCTGCTAAAGATTCTCTGACCCCAACGAACTGTACG  
TGAACCACAAAGTGTATACCAGGCATATGACATGGATCCCCCTGGGGAACCAGGCTGATCTCTTTCCAGA  
GGGCACTATCCGACCAGTGCATGATGATATCCTCATCGCTCAGCTGCGGCCTGGCCAAGAAATTGACCTG  
CTCATGCACTGTGTCAAGGGCATTGGCAAAGATCATGCCAAGTTTTCACCAGTGGCAACAGCCAGTTACA  
GGCTCTGCCAGACATCACCTGCTTGAGCCCGTGAAGGGGAGGCAGCTGAGGAGTTGAGCAGGTGCTT  
CTCACCTGGTGTATTGAGGTGCAGGAAGTCCAAGGTAAGGTTGAGGCTTGGCCAGAGTTGCCAACCCCGGCTG  
GATACCTTCAGCAGAGAAATCTTCGGAAATGAGAAGCTAAAGAAGTTGTGAGGCTTGGCCGGGTTTCGAG  
ATCATTATATCTTCTGTTGAGTCAACGGGGTGTGGCCACCAGATGTGCTGGTGAAGTGAAGCCATCAA  
AGTACTGATGGGGAAGTGCCGGCCTTCTTGGATGAACTAGATGCGGTTTCAGATGGAC

**ACGCGT**ACGCGGCCGCTCGAGCAGAAACTCATCTCAGAAGAGGATCTGGCAGCAATGATATCCTGGATT  
ACAAGGATGACGACGATAAGGTTTAA



[View online »](#)

**Protein Sequence:** >RC203486 protein sequence  
Red=Cloning site Green=Tags(s)

MAASQAVEEMRSRVVLGEFGVRNVHTTDFPGNYSYDDAWDQDRFEKNFRVDVVHMDENSLEFDMVGIDA  
 AIANAFRRILLAEVPTMAVEKVLVYNNTSIVQDEILAHRLGLIPIHADPRLFEYRNQGDDEGTEIDTLQF  
 RLQVRCRTRNPHAADSSDPNELVYNHKVYTRHMTWIPLGNQADLFPEGTIRPVHDDILIAQLRPGQEIDL  
 LMHCVKIGIKDHAKFSPVATASYRLLPDIITLLEPVEGEAAEELSRCFSPGVIEVQEVQGGKVARVANPRL  
 DTFREIFRNEKLLKVVRLARVRDHYIFSVESTGVLPPDVLVSEAIKVLMGKCRRFLELDAVQMD

TRTRPLEQKLISEEDLAANDILDYKDDDDKV

**Chromatograms:** [https://cdn.origene.com/chromatograms/mk6414\\_g11.zip](https://cdn.origene.com/chromatograms/mk6414_g11.zip)

**Restriction Sites:** SgfI-MluI

**Cloning Scheme:**



**ACCN:** NM\_203290

**ORF Size:** 1038 bp

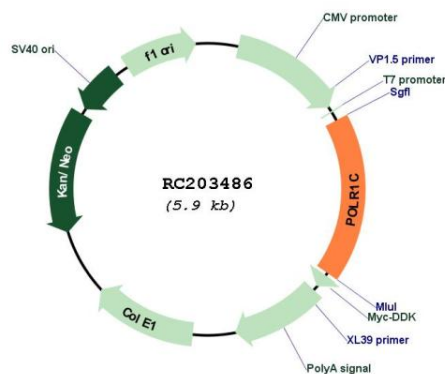
**OTI Disclaimer:** The molecular sequence of this clone aligns with the gene accession number as a point of reference only. However, individual transcript sequences of the same gene can differ through naturally occurring variations (e.g. polymorphisms), each with its own valid existence. This clone is substantially in agreement with the reference, but a complete review of all prevailing variants is recommended prior to use. [More info](#)

**OTI Annotation:** This clone was engineered to express the complete ORF with an expression tag. Expression varies depending on the nature of the gene.

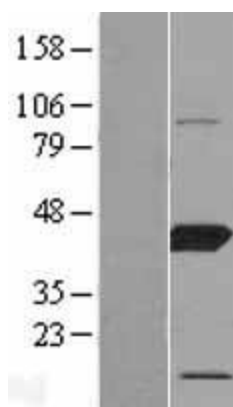
**Components:** The ORF clone is ion-exchange column purified and shipped in a 2D barcoded Matrix tube containing 10ug of transfection-ready, dried plasmid DNA (reconstitute with 100 ul of water).

<b>Reconstitution Method:</b>	<ol style="list-style-type: none"><li>1. Centrifuge at 5,000xg for 5min.</li><li>2. Carefully open the tube and add 100ul of sterile water to dissolve the DNA.</li><li>3. Close the tube and incubate for 10 minutes at room temperature.</li><li>4. Briefly vortex the tube and then do a quick spin (less than 5000xg) to concentrate the liquid at the bottom.</li><li>5. Store the suspended plasmid at -20°C. The DNA is stable for at least one year from date of shipping when stored at -20°C.</li></ol>
<b>RefSeq:</b>	<a href="#">NM_203290.4</a>
<b>RefSeq Size:</b>	1353 bp
<b>RefSeq ORF:</b>	1041 bp
<b>Locus ID:</b>	9533
<b>UniProt ID:</b>	<a href="#">O15160</a>
<b>Cytogenetics:</b>	6p21.1
<b>Protein Families:</b>	Druggable Genome, Stem cell - Pluripotency, Transcription Factors
<b>Protein Pathways:</b>	Cytosolic DNA-sensing pathway, Metabolic pathways, Purine metabolism, Pyrimidine metabolism, RNA polymerase
<b>MW:</b>	39.2 kDa
<b>Gene Summary:</b>	The protein encoded by this gene is a subunit of both RNA polymerase I and RNA polymerase III complexes. The encoded protein is part of the Pol core element. Mutations in this gene have been associated with Treacher Collins syndrome (TCS) and hypomyelinating leukodystrophy 11. Alternative splicing results in multiple transcript variants. [provided by RefSeq, Jan 2016]

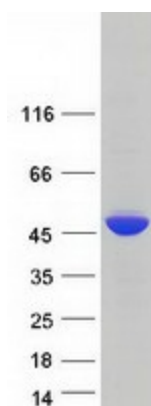
### Product images:



Circular map for RC203486



Western blot validation of overexpression lysate (Cat# [LY404374]) using anti-DDK antibody (Cat# [TA50011-100]). Left: Cell lysates from untransfected HEK293T cells; Right: Cell lysates from HEK293T cells transfected with RC203486 using transfection reagent MegaTran 2.0 (Cat# [TT210002]).



Coomassie blue staining of purified POLR1C protein (Cat# [TP303486]). The protein was produced from HEK293T cells transfected with POLR1C cDNA clone (Cat# RC203486) using MegaTran 2.0 (Cat# [TT210002]).