

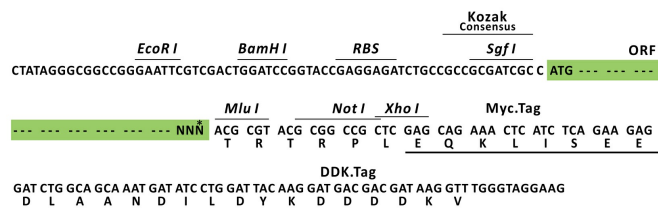
## Product datasheet for RC203483L3

### CDC42EP1 (NM\_007061) Human Tagged Lenti ORF Clone

#### Product data:

Product Type:	Expression Plasmids
Product Name:	CDC42EP1 (NM_007061) Human Tagged Lenti ORF Clone
Tag:	Myc-DDK
Symbol:	CDC42EP1
Synonyms:	55 kDa bone marrow stromal/endothelial cell protein; BORG5; CDC42 effector protein (Rho GTPase binding) 1; CDC42 effector protein 1; CEP1; CEP1, BORG5, MSE55, MGC15316; MGC15316; MSE55; OTTHUMP00000028709; serum constituent protein
Mammalian Cell Selection:	Puromycin
Vector:	pLenti-C-Myc-DDK-P2A-Puro (PS100092)
E. coli Selection:	Chloramphenicol (34 ug/mL)
ORF Nucleotide Sequence:	The ORF insert of this clone is exactly the same as(RC203483).
Restriction Sites:	SgfI-MluI
Cloning Scheme:	

Cloning sites used for ORF Shuttling:



\* The last codon before the Stop codon of the ORF.

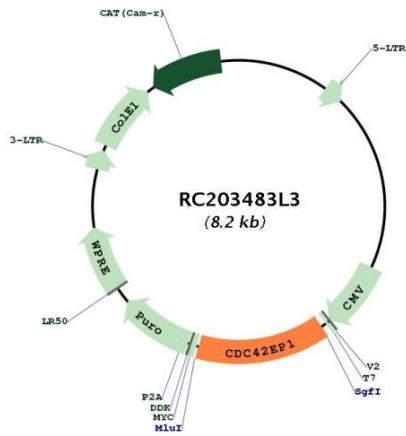
ACCN: NM\_007061



[View online »](#)

<b>ORF Size:</b>	1152 bp
<b>OTI Disclaimer:</b>	The molecular sequence of this clone aligns with the gene accession number as a point of reference only. However, individual transcript sequences of the same gene can differ through naturally occurring variations (e.g. polymorphisms), each with its own valid existence. This clone is substantially in agreement with the reference, but a complete review of all prevailing variants is recommended prior to use. <a href="#">More info</a>
<b>OTI Annotation:</b>	This clone was engineered to express the complete ORF with an expression tag. Expression varies depending on the nature of the gene.
<b>Components:</b>	The ORF clone is ion-exchange column purified and shipped in a 2D barcoded Matrix tube containing 10ug of transfection-ready, dried plasmid DNA (reconstitute with 100 ul of water).
<b>Reconstitution Method:</b>	<ol style="list-style-type: none"><li>1. Centrifuge at 5,000xg for 5min.</li><li>2. Carefully open the tube and add 100ul of sterile water to dissolve the DNA.</li><li>3. Close the tube and incubate for 10 minutes at room temperature.</li><li>4. Briefly vortex the tube and then do a quick spin (less than 5000xg) to concentrate the liquid at the bottom.</li><li>5. Store the suspended plasmid at -20°C. The DNA is stable for at least one year from date of shipping when stored at -20°C.</li></ol>
<b>RefSeq:</b>	<a href="#">NM_007061.3</a> , <a href="#">NP_008992.3</a>
<b>RefSeq Size:</b>	2182 bp
<b>RefSeq ORF:</b>	1154 bp
<b>Locus ID:</b>	11135
<b>Cytogenetics:</b>	22q13.1
<b>MW:</b>	39.7 kDa
<b>Gene Summary:</b>	CDC42 is a member of the Rho GTPase family that regulates multiple cellular activities, including actin polymerization. The protein encoded by this gene is a CDC42 binding protein that mediates actin cytoskeleton reorganization at the plasma membrane. This protein is secreted and is primarily found in bone marrow. [provided by RefSeq, Jul 2008]

Product images:



Circular map for RC203483L3