

## Product datasheet for **RC203483**

### CDC42EP1 (NM\_007061) Human Tagged ORF Clone

#### Product data:

Product Type:	Expression Plasmids
Product Name:	CDC42EP1 (NM_007061) Human Tagged ORF Clone
Tag:	Myc-DDK
Symbol:	CDC42EP1
Synonyms:	55 kDa bone marrow stromal/endothelial cell protein; BORG5; CDC42 effector protein (Rho GTPase binding) 1; CDC42 effector protein 1; CEP1; CEP1, BORG5, MSE55, MGC15316; MGC15316; MSE55; OTTHUMP00000028709; serum constituent protein
Mammalian Cell Selection:	Neomycin
Vector:	pCMV6-Entry (PS100001)
E. coli Selection:	Kanamycin (25 ug/mL)



[View online »](#)

**ORF Nucleotide Sequence:**

>RC203483 ORF sequence  
 Red=Cloning site Blue=ORF Green=Tags(s)

TTTTGTAATACGACTCACTATAGGGCGGCCGGAATTCGTCGACTGGATCCGGTACCGAGGAGATCTGCC  
 GCC**CGGATCGCC**

ATGCCCGCCCCAGGGGGCAGAGGCGCCGCCACCATGAGCCTGGGCAAGCTCTCGCCTGTGGGCTGGG  
 TGTCAGTTACAGGAAAGAGGCGGCTGACTGCAGACATGATCAGCCACCCACTCGGGGACTTCCGCCA  
 CACCATGCATGTGGCCGTGGCGGGATGTCTTCGGGGACACGTCTTCTCAGCAACCACGGTGGCAGC  
 TCCGGGAGACCCATCGCTCACCCCGCAGCTTCTGGCCAAGAAGCTGCAGCTGGTGCAGGAGGTGGGGG  
 CGCCCCCGGAGGATGGCATCTCCCCGTCACCCCTCCCGGCTCCACCGGCCATCTCCCCATCATCAA  
 GAACGCCATCTCCCTGCCCAGCTCAACCAGGCCGCTACGACAGCCTCGTGGTTGGCAAGCTCAGCTTC  
 GACAGCAGCCCCACAGCTCCACGGACGGCCACTCCAGCTACGGCCTGGACTCTGGGTTCTGCACCATCT  
 CCCGCCTGCCCGCTCGAAAAGCCGATGACCGAGACCGGGATGGTTCTTCCCCTCTGAGCCCGGGCT  
 TCGCCGCTCTGACTCTCTTGTCTTCCGCCTGGACCTCGACCTGGGCCCTCACTCCTCAGCGAGCTG  
 CTAGGGGTGATGAGCCTGCCAGAAGCCCTGCAGCTGAGACTCCAGCCCCGCTGCAAACCCCCAGCCC  
 CTAAGCAAAACCCACGGGTCTGCTGCAAACCCCCAGCCACTACTGCAAACCCCCAGCACCTGCCGC  
 AACCCCCACGGGTCTGCTGAAATCCCCAGCCCTGCCGAAGCTCCACACCCATGGACACTGTCCC  
 AATGGGGTAACAGCTGGGTTGGGCCAGTGGCTGAGGTGAAGTCCAGCCAGTGGGAGGGGTCCCCGAG  
 GACCTGCTGGCCCTGCCCTCGGCAGGCACTGGGGAGCAGGCTGGGATGGCGGCCACCACTACCCAGAGAT  
 GGATGCGCGGCAGGAGCGGGTGGAGGTGCTGCCCAAGCCCGGCCTCTGGGAGAGCCTGGACGAAGAG  
 TGGAGGGCGCCCCAGGCAGGCAGCAGGACCCAGTGCCCAGCACAGTGAAGCAAACACCTTTGAATTTG  
 CGGATGCTGAGGAGGATGATGAGGTCAAGGTG

**ACGCGT**ACGCGGCCGCTCGAGCAGAAACTCATCTCAGAAGAGGATCTGGCAGCAAATGATATCCTGGATT  
 ACAAGGATGACGACGATAAGGTTTAA

**Protein Sequence:**

>RC203483 protein sequence  
 Red=Cloning site Green=Tags(s)

MPGPQGGRGAATMSLGKLSVPGWVSSSQKRRLTADMISHPLGDFRHTMHVGRGGDVFGDTSFLSNHGG  
 SGSTHRSPRSFLAKKLQVRRVGAPRRMASPPAPSPAPPAISPIIKNAISLPQLNQAAYDSL VVGKLSF  
 DSSPTSSTDGHSYGLDSGFCTISRLPRSEKPHDRDRDGSFPSEPLRRSDSLLSFRLDLDLGPSLLSEL  
 LGVMSLPEAPAAETPAPANPPAPTANPTGPAANPPATTANPPAPAAATPTGPAANPPAPAAASSTPHGHCP  
 NGVTAGLGPVAEVKSSPVGGPRGPAGPALGRHWGAGWDGGHYPEDARQERVEVLPQARASWESLDEE  
 WRAPQAGSRTPVPSTVQANTFEFADAEEDEVKV

**TRTRPLEQKLI**SEEDLAANDILDYKDDDDKV

**Chromatograms:**

[https://cdn.origene.com/chromatograms/mk6566\\_g04.zip](https://cdn.origene.com/chromatograms/mk6566_g04.zip)

**Restriction Sites:**

Sgfl-Mlul

Cloning Scheme:



ACCN: NM\_007061

ORF Size: 1152 bp

OTI Disclaimer: The molecular sequence of this clone aligns with the gene accession number as a point of reference only. However, individual transcript sequences of the same gene can differ through naturally occurring variations (e.g. polymorphisms), each with its own valid existence. This clone is substantially in agreement with the reference, but a complete review of all prevailing variants is recommended prior to use. [More info](#)

OTI Annotation: This clone was engineered to express the complete ORF with an expression tag. Expression varies depending on the nature of the gene.

Components: The ORF clone is ion-exchange column purified and shipped in a 2D barcoded Matrix tube containing 10ug of transfection-ready, dried plasmid DNA (reconstitute with 100 ul of water).

Reconstitution Method:

1. Centrifuge at 5,000xg for 5min.
2. Carefully open the tube and add 100ul of sterile water to dissolve the DNA.
3. Close the tube and incubate for 10 minutes at room temperature.
4. Briefly vortex the tube and then do a quick spin (less than 5000xg) to concentrate the liquid at the bottom.
5. Store the suspended plasmid at -20°C. The DNA is stable for at least one year from date of shipping when stored at -20°C.

RefSeq: [NM\\_007061.3](#), [NP\\_008992.3](#)

RefSeq Size: 2182 bp

RefSeq ORF: 1154 bp

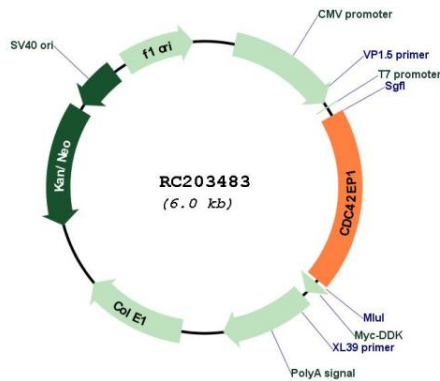
Locus ID: 11135

Cytogenetics: 22q13.1

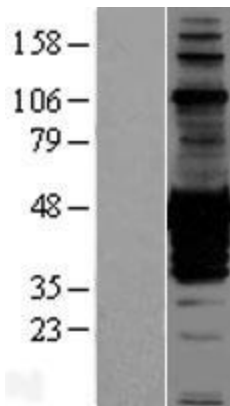
MW: 39.7 kDa

Gene Summary: CDC42 is a member of the Rho GTPase family that regulates multiple cellular activities, including actin polymerization. The protein encoded by this gene is a CDC42 binding protein that mediates actin cytoskeleton reorganization at the plasma membrane. This protein is secreted and is primarily found in bone marrow. [provided by RefSeq, Jul 2008]

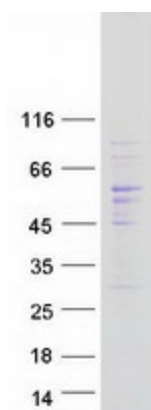
Product images:



Circular map for RC203483



Western blot validation of overexpression lysate (Cat# [LY407674]) using anti-DDK antibody (Cat# [TA50011-100]). Left: Cell lysates from untransfected HEK293T cells; Right: Cell lysates from HEK293T cells transfected with [RC222088] using transfection reagent MegaTran 2.0 (Cat# [TT210002]).



Coomassie blue staining of purified CDC42EP1 protein (Cat# [TP303483]). The protein was produced from HEK293T cells transfected with CDC42EP1 cDNA clone (Cat# RC203483) using MegaTran 2.0 (Cat# [TT210002]).