

Product datasheet for **RC203479**

WBP1 (NM_012477) Human Tagged ORF Clone

Product data:

Product Type:	Expression Plasmids
Product Name:	WBP1 (NM_012477) Human Tagged ORF Clone
Tag:	Myc-DDK
Symbol:	WBP1
Synonyms:	WBP-1
Mammalian Cell Selection:	Neomycin
Vector:	pCMV6-Entry (PS100001)
E. coli Selection:	Kanamycin (25 ug/mL)
ORF Nucleotide Sequence:	>RC203479 ORF sequence Red=Cloning site Blue=ORF Green=Tags(s)

TTTTGTAATACGACTCACTATAGGGCGGCCGGAATTCGTCGACTGGATCCGGTACCGAGGAGATCTGCC
GCC**CGATCGCC**

ATGGCTCGGGCCAGCAGCGGGAACGGCAGCGAGGAGGCCTGGGGGCACTTCGGGCGCCGCAACAGCAGC
TTCGAGAGCTGTGCCAGGAGTGAACAACCAGCCCTACCTCTGTGAGAGTGGTCACTGCTGCGGGGAGAC
TGGCTGCTGCACCTACTACTATGAGCTCTGGTGGTTCTGGCTGCTCTGGACTGTCCTCATCTCTTTAGC
TGCTGTTGCGCCTCCGCCACCGACGAGCTAAACTCAGGCTGCAACAACAGCAGCGGCAGCGTGAATCA
ACTTGTGGCCTATCATGGGCATGCCATGGGGTGGTCTTTCCCTACCGGTTCACTGCTTGACCTTCG
CTTCTCAGCACCTTCAAGCCCCAGCCTACGAGGATGTGGTTCACCGCCAGGCACACCACCCCCCT
TATACTGTGGCCCCAGGCCGCCCTTGACTGCTTCCAGTGAACAACTGCTGTTCTCCTCATCCAGCT
GCCCTGCCACTTTGAAGGAACAAATGTGGAAGGTGTTTCCCTCCCACAGAGTGCCCCCTCATCAGGA
GGGTGAGCCCGGGCAGGGGTGACCCCTGCCTCCACACCCCTCCTGCCGCTATCGCCGTTAACTGGC
GACTCCGGTATTGAGCTCTGCCCTTGTCTGCCTCCGGTGAGGGTGAGCCAGTCAAGGAGGTGAGGGTTA
GTGCCACCCTGCCAGATCTGGAGGACTACTCCCGTGTGCACTACCCCAAGAGTCTGTACCGCAGATCTT
TCCATGGGGCTGTCTTCCAGTGAAGGGGACATCCCA

ACGCGTACGCGGCCGCTCGAGCAGAACTCATCTCAGAAGAGGATCTGGCAGCAAATGATATCCTGGATT
ACAAGGATGACGACGATAAGGTTTAA



[View online »](#)

Protein Sequence: >RC203479 protein sequence
Red=Cloning site Green=Tags(s)

MARASSNGSSEEAWGALRAPQQQLRELCPGVNNQPYLCESGHCCGETGCCTYYYELWWFWLLWTVLILFS
 CCCAFRHRRAKLRLQQQRQREINLLAYHGACHGAGPFTGSLDLRFLSTFKPPAYEDVVHRPGTPTPPP
 YTVAPGRPLTASSEQTCCSSSSSCPAHFEGTNVEGVSSHQSAPPHQEGEPGAGVTPASTPPSCRYRRLTG
 DSGIELCPCPASGEGEPVKEVRVSATLPDLEDYSPCALPPESVPQIFPMGLSSSEGDIP

TRTRPLEQKLISEEDLAANDILDYKDDDDKV

Chromatograms: https://cdn.origene.com/chromatograms/mk6423_d10.zip

Restriction Sites: SgfI-MluI

Cloning Scheme:



ACCN: NM_012477

ORF Size: 807 bp

OTI Disclaimer: The molecular sequence of this clone aligns with the gene accession number as a point of reference only. However, individual transcript sequences of the same gene can differ through naturally occurring variations (e.g. polymorphisms), each with its own valid existence. This clone is substantially in agreement with the reference, but a complete review of all prevailing variants is recommended prior to use. [More info](#)

OTI Annotation: This clone was engineered to express the complete ORF with an expression tag. Expression varies depending on the nature of the gene.

Components: The ORF clone is ion-exchange column purified and shipped in a 2D barcoded Matrix tube containing 10ug of transfection-ready, dried plasmid DNA (reconstitute with 100 ul of water).

Reconstitution Method:

1. Centrifuge at 5,000xg for 5min.
2. Carefully open the tube and add 100ul of sterile water to dissolve the DNA.
3. Close the tube and incubate for 10 minutes at room temperature.
4. Briefly vortex the tube and then do a quick spin (less than 5000xg) to concentrate the liquid at the bottom.
5. Store the suspended plasmid at -20°C. The DNA is stable for at least one year from date of shipping when stored at -20°C.

RefSeq: [NM_012477.4](#)

RefSeq Size: 1237 bp

RefSeq ORF: 810 bp

Locus ID: 23559

UniProt ID: [Q96G27](#)

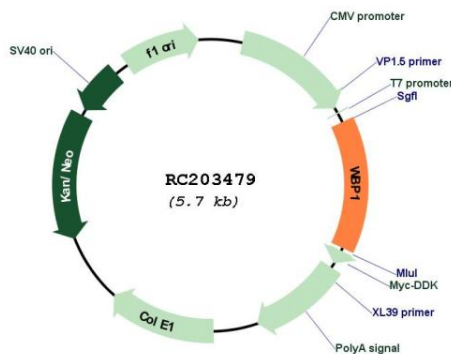
Cytogenetics: 2p13.1

Protein Families: Transmembrane

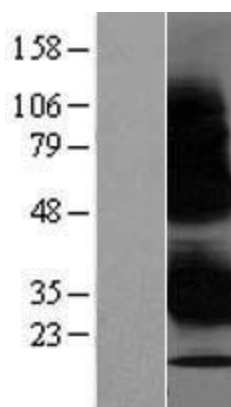
MW: 29.1 kDa

Gene Summary: The globular WW domain, named for the conserved tryptophan residues in the protein motif present in various structural and regulatory proteins, is known to play a role in the mediation of protein-protein interactions. This gene encodes a ligand of the WW domain of the Yes kinase-associated protein. Readthrough transcription of the neighboring upstream gene, which encodes INO80 complex subunit B, into this gene generates a non-coding transcript. [provided by RefSeq, Feb 2011]

Product images:



Circular map for RC203479



Western blot validation of overexpression lysate (Cat# [LY415737]) using anti-DDK antibody (Cat# [TA50011-100]). Left: Cell lysates from untransfected HEK293T cells; Right: Cell lysates from HEK293T cells transfected with RC203479 using transfection reagent MegaTran 2.0 (Cat# [TT210002]).