

Product datasheet for RC203478

FHL1 (NM_001449) Human Tagged ORF Clone

Product data:

| | |
|---------------------------|--|
| Product Type: | Expression Plasmids |
| Product Name: | FHL1 (NM_001449) Human Tagged ORF Clone |
| Tag: | Myc-DDK |
| Symbol: | FHL1 |
| Synonyms: | FCMSU; FHL-1; FHL1A; FHL1B; FLH1A; KYOT; RBMX1A; RBMX1B; SLIM; SLIM-1; SLIM1; SLIMMER; XMPMA |
| Mammalian Cell Selection: | Neomycin |
| Vector: | pCMV6-Entry (PS100001) |
| E. coli Selection: | Kanamycin (25 ug/mL) |
| ORF Nucleotide Sequence: | >RC203478 representing NM_001449 Red=Cloning site Blue=ORF Green=Tags(s) |

TTTTGTAATACGACTCACTATAGGGCGGCCGGAATTCGTCGACTGGATCCGGTACCGAGGAGATCTGCC
GCCGCGATCGCC

ATGGCGGAGAAGTTTGACTGCCACTACTGCAGGGATCCCTTGCAGGGGAAGAAGTATGTGCAAAAGGATG
GCCACCACTGCTGCCTGAAATGCTTTGACAAGTTCTGTGCCAACACCTGTGTGGAATGCCCAAGCCCAT
CGGTGCGGACTCCAAGGAGGTGCACTATAAGAACCGCTTCTGGCATGACACCTGCTCCGCTGTGCCAAG
TGCCTTACCCCTTGGCCAATGAGACCTTTGTGGCCAAGGACAACAAGATCCTGTGCAACAAGTGCACCA
CTCGGGAGGACTCCCCAAGTGAAGGGGTGCTTCAAGGCCATTGTGGCAGGAGATCAAAACGTGGAGTA
CAAGGGGACCGTCTGGCACAAGACTGCTTACCTGTAGTAAGTCAAGCAAGTCATCGGGACTGGAAGC
TTCTTCCCTAAAGGGGAGGACTTCTACTGCGTGACTTGCCATGAGACCAAGTTTGCCAAGCATTGCGTGA
AGTGCAACAAGGCCATCACATCTGGAGGAATCACTTACCAGGATCAGCCCTGGCATGCCGATTGCTTTGT
GTGTGTTACCTGCTCTAAGAAGCTGGCTGGCAGCGTTTACCGCTGTGGAGGACCAAGTATTACTGCGTG
GATTGCTACAAGAACTTTGTGGCCAAGAAGTGTGCTGGATGCAAGAACCCCATCACTGGGTTTGGTAAAG
GCTCCAGTGTGGTGGCCTATGAAGGACAATCCTGGCAGCACTACTGCTTCCACTGCAAAAAATGCTCCGT
GAATCTGGCCAACAAGCGCTTTGTTTTCCACCAGGAGCAAGTGTATTGTCCCGACTGTGCCAAAAAGCTG

ACGCGTACGCGGCCGCTCGAGCAGAACTCATCTCAGAAGAGGATCTGGCAGCAATGATATCCTGGATT
ACAAGGATGACGACGATAAGGTTTAA



[View online »](#)

Protein Sequence: >RC203478 representing NM_001449
 Red=Cloning site Green=Tags(s)

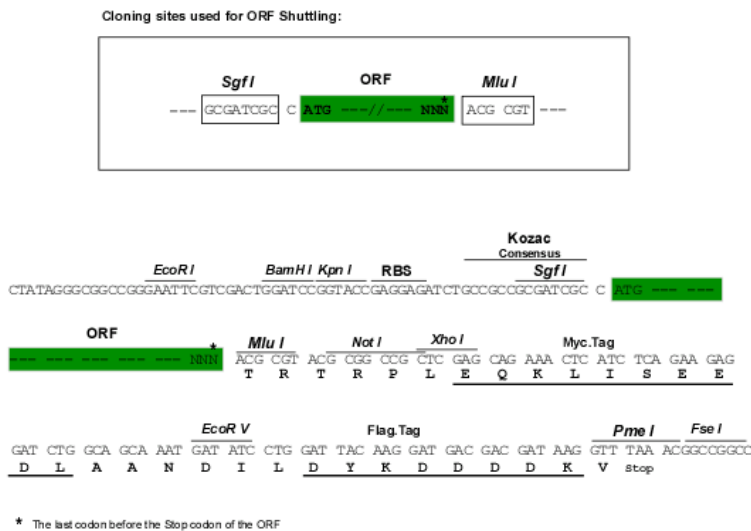
MAEKFDCHYCRDPLQGKKYVQKDGHHCLKCFDKFCANTCVECRKPIGADSKVHYKNRWFHDTCFRCAK
 CLHPLANETFFVAKDNKILCNKCTTREDSPKCKGCFKAIVAGDQNVYKGTVWHKDCFTCSNCKQVIGTGS
 FFPKGEDFYCVTCHETKFAKHCVKCNKAITSGGITIQDQPHWADCFVCVTCSSKLAGQRF TAVEDQYYCV
 DCYKNFVAKKACGCKNPITGFGKSSVAYEGQSWHDYCFHCKKCSVNLANKRFFVHQEQVYPCDAKKL

TRTRPLEQKLISEEDLAANDILDYKDDDDKV

Chromatograms: https://cdn.origene.com/chromatograms/mg2444_h04.zip

Restriction Sites: SgfI-MluI

Cloning Scheme:



ACCN: NM_001449

ORF Size: 840 bp

OTI Disclaimer: The molecular sequence of this clone aligns with the gene accession number as a point of reference only. However, individual transcript sequences of the same gene can differ through naturally occurring variations (e.g. polymorphisms), each with its own valid existence. This clone is substantially in agreement with the reference, but a complete review of all prevailing variants is recommended prior to use. [More info](#)

OTI Annotation: This clone was engineered to express the complete ORF with an expression tag. Expression varies depending on the nature of the gene.

Components: The ORF clone is ion-exchange column purified and shipped in a 2D barcoded Matrix tube containing 10ug of transfection-ready, dried plasmid DNA (reconstitute with 100 ul of water).

Reconstitution Method:

1. Centrifuge at 5,000xg for 5min.
2. Carefully open the tube and add 100ul of sterile water to dissolve the DNA.
3. Close the tube and incubate for 10 minutes at room temperature.
4. Briefly vortex the tube and then do a quick spin (less than 5000xg) to concentrate the liquid at the bottom.
5. Store the suspended plasmid at -20°C. The DNA is stable for at least one year from date of shipping when stored at -20°C.

RefSeq: [NM_001449.5](#)

RefSeq Size: 2398 bp

RefSeq ORF: 843 bp

Locus ID: 2273

UniProt ID: [Q13642](#)

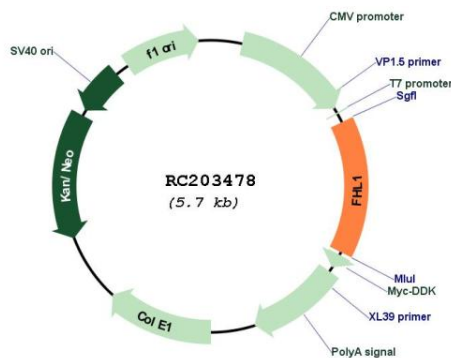
Cytogenetics: Xq26.3

Domains: LIM

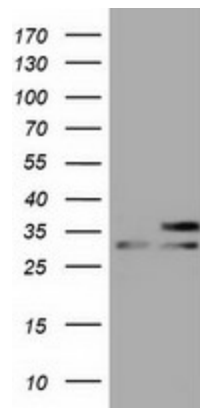
MW: 31.7 kDa

Gene Summary: This gene encodes a member of the four-and-a-half-LIM-only protein family. Family members contain two highly conserved, tandemly arranged, zinc finger domains with four highly conserved cysteines binding a zinc atom in each zinc finger. Expression of these family members occurs in a cell- and tissue-specific mode and these proteins are involved in many cellular processes. Mutations in this gene have been found in patients with Emery-Dreifuss muscular dystrophy. Multiple alternately spliced transcript variants which encode different protein isoforms have been described.[provided by RefSeq, Nov 2009]

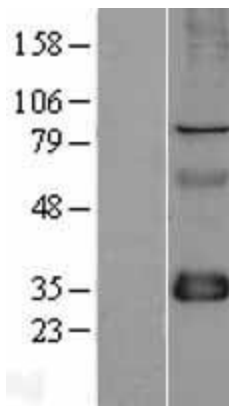
Product images:



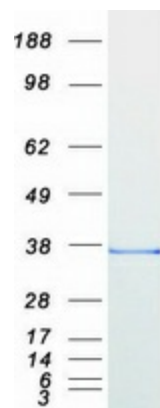
Circular map for RC203478



HEK293T cells were transfected with the pCMV6-ENTRY control (Cat# [PS100001], Left lane) or pCMV6-ENTRY FHL1 (Cat# RC203478, Right lane) cDNA for 48 hrs and lysed. Equivalent amounts of cell lysates (5 ug per lane) were separated by SDS-PAGE and immunoblotted with anti-FHL1 (Cat# [TA501296]). Positive lysates [LY400563] (100ug) and [LC400563] (20ug) can be purchased separately from OriGene.



Western blot validation of overexpression lysate (Cat# [LY431828]) using anti-DDK antibody (Cat# [TA50011-100]). Left: Cell lysates from untransfected HEK293T cells; Right: Cell lysates from HEK293T cells transfected with [RC228800] using transfection reagent MegaTran 2.0 (Cat# [TT210002]).



Coomassie blue staining of purified FHL1 protein (Cat# [TP303478]). The protein was produced from HEK293T cells transfected with FHL1 cDNA clone (Cat# RC203478) using MegaTran 2.0 (Cat# [TT210002]).