

Product datasheet for **RC203477**

TFIIE beta (GTF2E2) (NM_002095) Human Tagged ORF Clone

Product data:

Product Type:	Expression Plasmids
Product Name:	TFIIE beta (GTF2E2) (NM_002095) Human Tagged ORF Clone
Tag:	Myc-DDK
Symbol:	TFIIE beta
Synonyms:	FE; TF2E2; TFIIE-B; TTD6
Mammalian Cell Selection:	Neomycin
Vector:	pCMV6-Entry (PS100001)
E. coli Selection:	Kanamycin (25 ug/mL)
ORF Nucleotide Sequence:	>RC203477 ORF sequence Red=Cloning site Blue=ORF Green=Tags(s)

TTTTGTAATACGACTCACTATAGGGCGCCGGGAATTCGTCGACTGGATCCGGTACCGAGGAGATCTGCC
GCC**CGATCGCC**

ATGGATCCAAGCCTGTTGAGAGAAAGGGAGCTGTTCAAAAAACGAGCTCTTTCTACTCCTGTAGTAGAAA
AACGTTTCAGCATCTTCTGAGTCATCATCATCGTCAAAGAAGAAGAAAACAAAGGTAGAACATGGAGG
ATCGTCAGGCTCTAAACAAAATTCTGATCATAGCAATGGATCATTTAACTTCAAAGCTTTGTCAGGAAGC
TCTGGATAAAGTTTGGTGTCTTGCTAAGATTGTGAATTACATGAAGACACGGCATCAGCGAGGAGATA
CGCATCCTCTAACCTTAGATGAAATTTGGATGAAACACAACATTTAGATATTGGACTCAAGCAGAAACA
ATGGCTAATGACTGAGGCTTTAGTCAACAATCCCAAAATTGAAGTAATAGATGGGAAGTATGCTTTCAAG
CCCAAGTACAACGTGAGAGATAAGAAGGCCCTACTTAGGCTCTTAGATCAGCATGACCAGCGAGGATTAG
GAGGAATCTTTTGAAGACATAGAAGAAGCACTGCCAATCCAGAAAGCTGTCAAGGCTTTGGGGGA
CCAGATACTATTTGTAATCGTCCCGATAAGAAGAAAATACTTTCTTCAATGATAAGAGCTGTCAGTTT
TCTGTGGATGAAGATTTAGAACTGTGGAGGAGTGTCACTGTAGATCCATGGACGAGGAGAAAATTG
AGAATATCTGAAGCGACAGGGTATTTCTTCCATGCAGGAATCTGGACCAAGAAAGTGGCCCTATTCA
GAGAAGGAAAAAGCCTGCTTACAGAAAAAGCGACGCTTAAAGACTCATAACGAACACTTGGCTGGAGTG
CTGAAGGATTACTCTGACATTACTCCAGCAAA

ACGCGTACGCGGCCGCTCGAGCAGAAACTCATCTCAGAAGAGGATCTGGCAGCAAATGATATCCTGGATT
ACAAGGATGACGACGATAAGGTTTAA



[View online »](#)

Protein Sequence: >RC203477 protein sequence
Red=Cloning site Green=Tags(s)

MDPSLLRERELFKKRALSTPVVEKRSASSESSSSSSKTTKVEHGGSSGSKQNSDHSNGSFNLKALSGS
SGYKFGVLAKIVNYMTRHORGDTHPLTLDEILDITQHLIDIGLKQKQWLMTALVNNPKIEVIDGKYAFK
PKYNVRDKKALLRLLDQHDQRGLGGILLEDIEEALPNSQKAVKALGDQILFVNRDPKILFFNDKSCQF
SVDEEFQKLRWSVTVDSDMDEEKIEEYLKROGISSMQESGPKKVAPIQRRKKPASQKKRRFKTHNEHLAGV
LKDYSIDITSSK

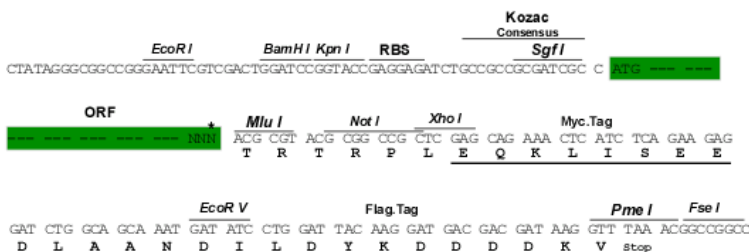
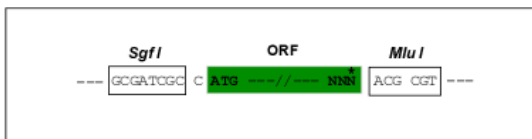
TRTRPLEQKLISEEDLAANDILDYKDDDDKV

Chromatograms: https://cdn.origene.com/chromatograms/mk6429_e11.zip

Restriction Sites: SgfI-MluI

Cloning Scheme:

Cloning sites used for ORF Shuttling:



* The last codon before the Stop codon of the ORF

ACCN: NM_002095

ORF Size: 873 bp

OTI Disclaimer: The molecular sequence of this clone aligns with the gene accession number as a point of reference only. However, individual transcript sequences of the same gene can differ through naturally occurring variations (e.g. polymorphisms), each with its own valid existence. This clone is substantially in agreement with the reference, but a complete review of all prevailing variants is recommended prior to use. [More info](#)

OTI Annotation: This clone was engineered to express the complete ORF with an expression tag. Expression varies depending on the nature of the gene.

Components: The ORF clone is ion-exchange column purified and shipped in a 2D barcoded Matrix tube containing 10ug of transfection-ready, dried plasmid DNA (reconstitute with 100 ul of water).

Reconstitution Method:

1. Centrifuge at 5,000xg for 5min.
2. Carefully open the tube and add 100ul of sterile water to dissolve the DNA.
3. Close the tube and incubate for 10 minutes at room temperature.
4. Briefly vortex the tube and then do a quick spin (less than 5000xg) to concentrate the liquid at the bottom.
5. Store the suspended plasmid at -20°C. The DNA is stable for at least one year from date of shipping when stored at -20°C.

RefSeq: [NM_002095.6](#)

RefSeq Size: 1560 bp

RefSeq ORF: 876 bp

Locus ID: 2961

UniProt ID: [P29084](#)

Cytogenetics: 8p12

Domains: TFIIE_beta

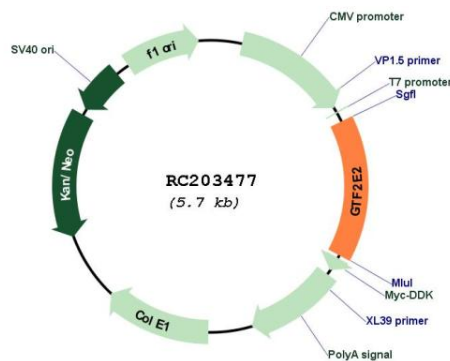
Protein Families: Transcription Factors

Protein Pathways: Basal transcription factors

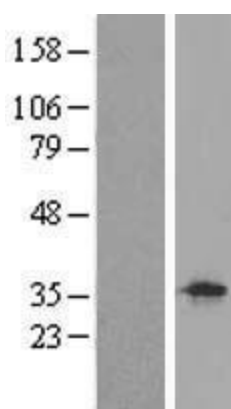
MW: 33 kDa

Gene Summary: The general transcription factor IIE (TFIIE) is part of the RNA polymerase II transcription initiation complex, recruiting TFIIH and being essential for promoter clearance by RNA polymerase II. TFIIE is a heterodimer (and sometimes heterotetramer) of alpha and beta subunits. The protein encoded by this gene represents the beta subunit of TFIIE. [provided by RefSeq, Jan 2017]

Product images:



Circular map for RC203477



Western blot validation of overexpression lysate (Cat# [LY419544]) using anti-DDK antibody (Cat# [TA50011-100]). Left: Cell lysates from untransfected HEK293T cells; Right: Cell lysates from HEK293T cells transfected with RC203477 using transfection reagent MegaTran 2.0 (Cat# [TT210002]).