

## Product datasheet for RC203476

### VILIP3 (HPCAL1) (NM\_134421) Human Tagged ORF Clone

#### Product data:

**Product Type:** Expression Plasmids  
**Product Name:** VILIP3 (HPCAL1) (NM\_134421) Human Tagged ORF Clone  
**Tag:** Myc-DDK  
**Symbol:** VILIP3  
**Synonyms:** BDR1; HLP2; VILIP-3  
**Mammalian Cell Selection:** Neomycin  
**Vector:** pCMV6-Entry (PS100001)  
**E. coli Selection:** Kanamycin (25 ug/mL)  
**ORF Nucleotide Sequence:** >RC203476 ORF sequence  
 Red=Cloning site Blue=ORF Green=Tags(s)

TTTTGTAATACGACTCACTATAGGGCGCCGGGAATTCGTCGACTGGATCCGGTACCGAGGAGATCTGCC  
 GCC**CGATCGCC**

ATGGGCAAACAGAACAGCAAGCTGCGGCCGAGGTGCTGCAGGACCTGCGGGAGAACACGGAGTTCACCG  
 ACCACGAGCTGCAGGAGTGTACAAGGGCTTCTCAAGGACTGCCACCGGCCACCTGACCGTGGACGA  
 GTTCAAGAAGATCTACGCCAATTCTTCCCTACGGCGACGCTTCCAAGTTCGCCGAGCAGCTTCCGC  
 ACCTTCGACACCAACGGCGACGGCACCATCGACTCCGGGAGTTCATCATTGCGTGAGCGTGACCTCGC  
 GGGCAAGCTGGAGCAGAAGCTCAAGTGGCCTTCAGCATGTACGACCTGGACGGCAACGGCTACATCAG  
 CCGCAGCGAGATGCTGGAGATCGTGCAGGCCATCTACAAGATGGTGTCTGTGATGAAGATGCCGGAG  
 GATGAGTCCACCCGGAGAAGCGCACAGACAAGATCTTCAGGCAGATGGACCAACAATGACGGCAAAC  
 TGTCTTGAAGAATTCATCAGAGGTGCCAAGAGCGACCCCTCCATCGTCCGCTGCTGCAGTGCGACCC  
 CAGCAGTGCCAGTCAGTTC

**ACGCGT**ACGCGGCCGCTCGAGCAGAACTCATCTCAGAAGAGGATCTGGCAGCAAATGATATCCTGGATT  
 ACAAGGATGACGACGATAAGGTTTAA

**Protein Sequence:** >RC203476 protein sequence  
 Red=Cloning site Green=Tags(s)

MGKQNSKLRPEVLQDLRENTFTDHELQEWYKGLKDCPTGHLTVDEFKKIYANFFPYGDASKFAEHVFR  
 TFDTNGDGTIDFREFIIALSVTSRGKLEQKLKWFASMYDLGNGYISRSEMLEIVQAIYKMVSSVMKMP  
 DESTPEKRTDKIFRQMDTNDGKLSLEEFIRGAKSDPSIVRLLQCDPSSASQF

**TRTRPLEQKLI**SEEDLAANDILDYKDDDDKV



[View online »](#)

**Chromatograms:** [https://cdn.origene.com/chromatograms/mk6424\\_g01.zip](https://cdn.origene.com/chromatograms/mk6424_g01.zip)

**Restriction Sites:** SgfI-MluI

**Cloning Scheme:**



**ACCN:** NM\_134421

**ORF Size:** 579 bp

**OTI Disclaimer:** The molecular sequence of this clone aligns with the gene accession number as a point of reference only. However, individual transcript sequences of the same gene can differ through naturally occurring variations (e.g. polymorphisms), each with its own valid existence. This clone is substantially in agreement with the reference, but a complete review of all prevailing variants is recommended prior to use. [More info](#)

**OTI Annotation:** This clone was engineered to express the complete ORF with an expression tag. Expression varies depending on the nature of the gene.

**Components:** The ORF clone is ion-exchange column purified and shipped in a 2D barcoded Matrix tube containing 10ug of transfection-ready, dried plasmid DNA (reconstitute with 100 ul of water).

**Reconstitution Method:**

1. Centrifuge at 5,000xg for 5min.
2. Carefully open the tube and add 100ul of sterile water to dissolve the DNA.
3. Close the tube and incubate for 10 minutes at room temperature.
4. Briefly vortex the tube and then do a quick spin (less than 5000xg) to concentrate the liquid at the bottom.
5. Store the suspended plasmid at -20°C. The DNA is stable for at least one year from date of shipping when stored at -20°C.

**RefSeq:** [NM\\_134421.2](#)

**RefSeq Size:** 1921 bp

**RefSeq ORF:** 582 bp

**Locus ID:** 3241

UniProt ID: [P37235](#)

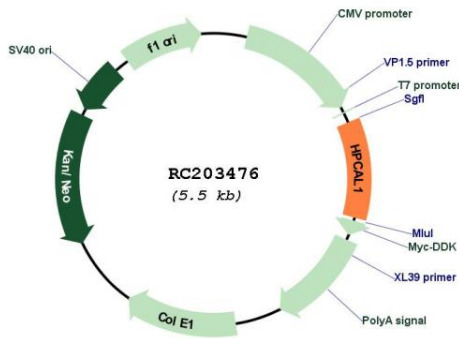
Cytogenetics: 2p25.1

Domains: EFh

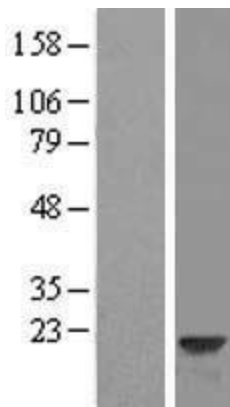
MW: 22.3 kDa

**Gene Summary:** The protein encoded by this gene is a member of neuron-specific calcium-binding proteins family found in the retina and brain. It is highly similar to human hippocalcin protein and nearly identical to the rat and mouse hippocalcin like-1 proteins. It may be involved in the calcium-dependent regulation of rhodopsin phosphorylation and may be of relevance for neuronal signalling in the central nervous system. Several alternatively spliced transcript variants encoding the same protein have been found for this gene. [provided by RefSeq, Apr 2012]

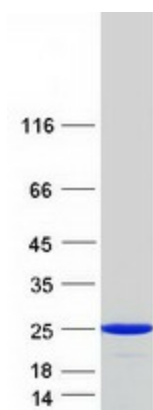
**Product images:**



Circular map for RC203476



Western blot validation of overexpression lysate (Cat# [LY408747]) using anti-DDK antibody (Cat# [TA50011-100]). Left: Cell lysates from untransfected HEK293T cells; Right: Cell lysates from HEK293T cells transfected with RC203476 using transfection reagent MegaTran 2.0 (Cat# [TT210002]).



Coomassie blue staining of purified HPCAL1 protein (Cat# [TP303476]). The protein was produced from HEK293T cells transfected with HPCAL1 cDNA clone (Cat# RC203476) using MegaTran 2.0 (Cat# [TT210002]).