

Product datasheet for **RC203474**

SMARCD1 (NM_003076) Human Tagged ORF Clone

Product data:

Product Type:	Expression Plasmids
Product Name:	SMARCD1 (NM_003076) Human Tagged ORF Clone
Tag:	Myc-DDK
Symbol:	SMARCD1
Synonyms:	BAF60A; CRACD1; CSS11; Rsc6p
Mammalian Cell Selection:	Neomycin
Vector:	pCMV6-Entry (PS100001)
E. coli Selection:	Kanamycin (25 ug/mL)



[View online »](#)

ORF Nucleotide Sequence:

>RC203474 ORF sequence
 Red=Cloning site Blue=ORF Green=Tags(s)

TTTTGTAATACGACTCACTATAGGGCGGCCGGAATTCGTCGACTGGATCCGGTACCGAGGAGATCTGCC
 GCC**CGCATCGCC**

ATGGGCCCGGCTCCGGTCAAGGCTGTACCGCTCCCGATGCCCGGAGCGCCTATCCGAGACCAGGTA
 TGTGCCAGGCAGCCGAATGACACCTCAGGGACCTTCCATGGGACCCCTGGCTATGGGGGAACCCCTC
 AGTCCGACCTGGCCTGGCCAGTCAGGGATGGATCAGTCCCGCAAGAGACCTGCCCTCAGCAGATCCAG
 CAGGTCCAGCAGCAGCGGTCCAAAATCGAAACCAATGCAAAGAAAAAGAAGATGGTGACAAAAATTC
 TACCTCAAAGGATTCGTGAAGTGTACCAGAATCCAGGCCTATATGGATCTCTTGGCTTTTAAAGGAA
 ACTGGACCAGACTATCATGAGGAAACGGCTAGATATCCAAGAGGCCTTGAACCTCCATCAAGCAAAAA
 CGGAAGCTGCGAATTTTCATTTCTAACCTTTCAATCCGGCTAAGTCAGATGCCGAGGATGGGAAGGGA
 CGGTGGCTTCTGGGAGCTTCGGGTAGAAGGACGGCTCCTGGAGGATTCAGCCTTGTCCAAATATGATGC
 CACTAAACAAAAGAGGAAGTTCTCTTCTTTTAAAGTCTTGGTGATTGAAGTGGACAAAGACCTGTAT
 GGCCAGACAACCATCTGGTAGAATGGCACAGGACCGCCACTACCCAGGAGACCGATGGCTTTCAGGTGA
 AGCGGCCGGGAGACGTGAATGTACGGTGTACTGTCTACTGATGCTGGATTACCAGCCTCCCCAGTTTAA
 ATTAGACCCCGCCTAGCTCGACTCCTGGGCATCCATACCCAGACTCGTCCAGTGATCATCCAAGCACTG
 TGGCAATATTAAGACACATAAGCTCCAGGACCTCACGAGCGGGAGTTTGTCTGTGACAAGTACC
 TGCAGCAGATCTTTGAGTCTCAACGTATGAAGTTTTAGAGATCCCTCAGCGGCTCCATGCCTTGCTTAT
 GCCACCAGAACCTATCATCATTAAATCATGTCATCAGTGTGACCCGAATGATCAGAAAAAGACAGCTTGT
 TATGACATTGATGTTGAAGTGGATGACACCTTGAAGACCCAGATGAATCTTTTCTGCTGCCACTGCCA
 GCCAACAGGAGATTGCTACTCTAGACAACAAGATCCATGAGACAATAGAAACCATCAACCAGCTGAAGAC
 TCAGCGGGAGTTTCATGCTGAGCTTTGCCAGAGACCCCTCAGGGTTTCATCAATGACTGGCTTCAGTCCAG
 TGCAGGGACCTCAAGACAATGACTGATGTGGTGGTAACCCAGAGGAGGAGCGCCGAGCTGAGTTCTACT
 TCCAGCCCTGGGCTCAGGAGGCTGTGTGCCGATACTTCTACTCCAAGGTGCAGCAGAGACGACAAGAATT
 AGAGCAAGCCCTGGGAATCCGGAATACA

ACGCGTACGCGGCCGCTCGAGCAGAACTCATCTCAGAAGAGGATCTGGCAGCAATGATATCTGGATT
 ACAAGGATGACGACGATAAGGTTTAA

Protein Sequence:

>RC203474 protein sequence
 Red=Cloning site Green=Tags(s)

MGPAPQGGLYRSPMPGAAYPRPGMLPGSRMTPQGPPGYPGNNPSVRPGLAQSGMDQSRKRPAPQIQ
 QVQQQAVQNRNHNAKKKKMKILPQRIRELVPEAQAYMDLLAFERKLDQTIMRKRLLDIQEALKRPIKQK
 RKLRIFFISNTFNPAKSDAEDGEGTVASWELRVEGRLLLEDALSKYDATKQKRKFSFFKSLVIELDKDLY
 GPDNHLVEWHRTATTQETDGFQVCRPGDVNVRCTVLLMLDYQPPQFKLDPRLARLLGIHTQTRPVIIQAL
 WQYIKTHKLQDPHEREFVICDKYLQQIFESQRMKFSEIPQRLHALLMPPEPIIINHVISVDPNDQKKTAC
 YDIDVEVDDTLKTQMNSFLLSTASQQEIATLDNKIHETIETINQLKTQREFMLSFARDPQGFINDWLQSQ
 CRDLKTMDDVVGNEPEERRAEFYQPWAQEAUCRYFYFYSKVQRRQLEQALGIRNT

TRTRPLEQKLISEEDLAANDILDYKDDDDKV

Chromatograms:

https://cdn.origene.com/chromatograms/mk6057_g12.zip

Restriction Sites:

Sgfl-MluI

Cloning Scheme:

Cloning sites used for ORF Shutting:



* The last codon before the Stop codon of the ORF

ACCN: NM_003076

ORF Size: 1428 bp

OTI Disclaimer: The molecular sequence of this clone aligns with the gene accession number as a point of reference only. However, individual transcript sequences of the same gene can differ through naturally occurring variations (e.g. polymorphisms), each with its own valid existence. This clone is substantially in agreement with the reference, but a complete review of all prevailing variants is recommended prior to use. [More info](#)

OTI Annotation: This clone was engineered to express the complete ORF with an expression tag. Expression varies depending on the nature of the gene.

Components: The ORF clone is ion-exchange column purified and shipped in a 2D barcoded Matrix tube containing 10ug of transfection-ready, dried plasmid DNA (reconstitute with 100 ul of water).

Reconstitution Method:

1. Centrifuge at 5,000xg for 5min.
2. Carefully open the tube and add 100ul of sterile water to dissolve the DNA.
3. Close the tube and incubate for 10 minutes at room temperature.
4. Briefly vortex the tube and then do a quick spin (less than 5000xg) to concentrate the liquid at the bottom.
5. Store the suspended plasmid at -20°C. The DNA is stable for at least one year from date of shipping when stored at -20°C.

RefSeq: [NM_003076.3](#), [NP_003067.2](#)
RefSeq Size: 3431 bp

RefSeq ORF: 1548 bp

Locus ID: 6602

UniProt ID: [Q96GM5](#)
Cytogenetics: 12q13.12

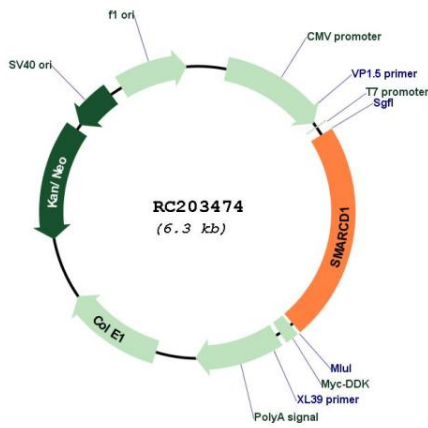
Domains: SWIB

Protein Families: Transcription Factors

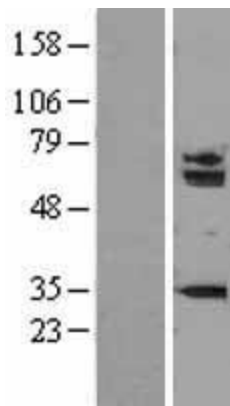
MW: 54.9 kDa

Gene Summary: The protein encoded by this gene is a member of the SWI/SNF family of proteins, whose members display helicase and ATPase activities and which are thought to regulate transcription of certain genes by altering the chromatin structure around those genes. The encoded protein is part of the large ATP-dependent chromatin remodeling complex SNF/SWI and has sequence similarity to the yeast Swp73 protein. Two transcript variants encoding different isoforms have been found for this gene. [provided by RefSeq, Jul 2008]

Product images:



Circular map for RC203474



Western blot validation of overexpression lysate (Cat# [LY401074]) using anti-DDK antibody (Cat# [TA50011-100]). Left: Cell lysates from untransfected HEK293T cells; Right: Cell lysates from HEK293T cells transfected with RC203474 using transfection reagent MegaTran 2.0 (Cat# [TT210002]).