

Product datasheet for RC203473

TAGLN2 (NM_003564) Human Tagged ORF Clone

Product data:

Product Type:	Expression Plasmids
Product Name:	TAGLN2 (NM_003564) Human Tagged ORF Clone
Tag:	Myc-DDK
Symbol:	TAGLN2
Synonyms:	HA1756
Mammalian Cell Selection:	Neomycin
Vector:	pCMV6-Entry (PS100001)
E. coli Selection:	Kanamycin (25 ug/mL)
ORF Nucleotide Sequence:	>RC203473 ORF sequence Red=Cloning site Blue=ORF Green=Tags(s)

TTTGTAAATACGACTCACTATAGGGCGGCCGGAATTCGTCGACTGGATCCGGTACCGAGGAGATCTGCC
 GCCCGCATCGCC

ATGGCCAACAGGGGACCTGCATATGGCCTGAGCCGGGAGGTGCAGCAGAAGATTGAGAAACAATATGATG
 CAGATCTGGAGCAGATCCTGATCCAGTGGATCACCACCCAGTGCCGAAAGGATGTGGGCCGGCCCCAGCC
 TGGACGCGAGAATTCCAGAACTGGCTCAAGGATGGCAGGTGCTATGTGAGCTCATTATGCACTGTAC
 CCCGAGGGGCAGGCCCCAGTAAGAAGATCCAGGCCTCCACCATGGCCTTCAAGCAGATGGAGCAGATCT
 CTCAGTTCCTGCAAGCAGCTGAGCGCTATGGCATTAAACCACTGACATCTTCCAACTGTGGACCTCTG
 GGAAGGAAAGAACATGGCCTGTGTGCAGCGGACGCTGATGAATCTGGGTGGGCTGGCAGTAGCCCGAGAT
 GATGGGCTCTTCTCTGGGGATCCCAACTGGTTCCTAAGAAATCCAAGGAGAATCCTCGGAATCTCTCGG
 ATAACCAGCTGCAAGAGGGCAAGACGTGATCGGGTTACAGATGGGCACCAACCGCGGGCGTCTCAGGC
 AGGCATGACTGGCTACGGGATGCCACGCCAGATCCTC

ACGCGTACGCGGCCGCTCGAGCAGAACTCATCTCAGAAGAGGATCTGGCAGCAAATGATATCCTGGATT
 ACAAGGATGACGACGATAAGGTTTAA

Protein Sequence:	>RC203473 protein sequence Red=Cloning site Green=Tags(s)
-------------------	--

MANRGPAYGLSREVQKIEKQYDADLEQILIQWITTQCRKDVGRPQPGRENFQNLKDGTVLCELINALY
 PEGQAPVKKIQASTMAFKQMEIQISQFLQAAERYGINTTDIFQTVDLWEGKNMACVQRTLMLNLGGLAVARD
 DGLFSGDPNWFPPKSKENPRNFSNQLQEGKNVIGLQMGTNRGASQAGMTGYGMPRQIL

TRTRPLEQKLISEEDLAANDILDYKDDDDKV


[View online »](#)

Chromatograms: https://cdn.origene.com/chromatograms/mk6057_h11.zip

Restriction Sites: SgfI-MluI

Cloning Scheme:



ACCN: NM_003564

ORF Size: 597 bp

OTI Disclaimer: Due to the inherent nature of this plasmid, standard methods to replicate additional amounts of DNA in E. coli are highly likely to result in mutations and/or rearrangements. Therefore, OriGene does not guarantee the capability to replicate this plasmid DNA. Additional amounts of DNA can be purchased from OriGene with batch-specific, full-sequence verification at a reduced cost. Please contact our customer care team at custsupport@origene.com or by calling 301.340.3188 option 3 for pricing and delivery.

The molecular sequence of this clone aligns with the gene accession number as a point of reference only. However, individual transcript sequences of the same gene can differ through naturally occurring variations (e.g. polymorphisms), each with its own valid existence. This clone is substantially in agreement with the reference, but a complete review of all prevailing variants is recommended prior to use. [More info](#)

OTI Annotation: This clone was engineered to express the complete ORF with an expression tag. Expression varies depending on the nature of the gene.

Components: The ORF clone is ion-exchange column purified and shipped in a 2D barcoded Matrix tube containing 10ug of transfection-ready, dried plasmid DNA (reconstitute with 100 ul of water).

Reconstitution Method:

1. Centrifuge at 5,000xg for 5min.
2. Carefully open the tube and add 100ul of sterile water to dissolve the DNA.
3. Close the tube and incubate for 10 minutes at room temperature.
4. Briefly vortex the tube and then do a quick spin (less than 5000xg) to concentrate the liquid at the bottom.
5. Store the suspended plasmid at -20°C. The DNA is stable for at least one year from date of shipping when stored at -20°C.

Note: Plasmids are not sterile. For experiments where strict sterility is required, filtration with 0.22um filter is required.

RefSeq: [NM_003564.3](#)

RefSeq Size: 1419 bp

RefSeq ORF: 600 bp

Locus ID: 8407

UniProt ID: [P37802](#)

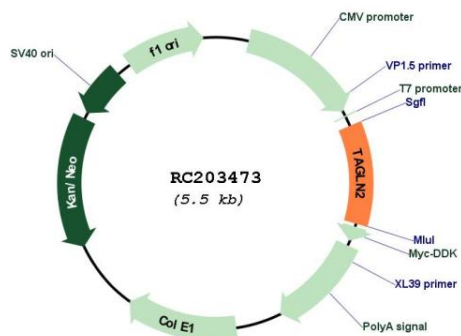
Cytogenetics: 1q23.2

Domains: calponin, CH

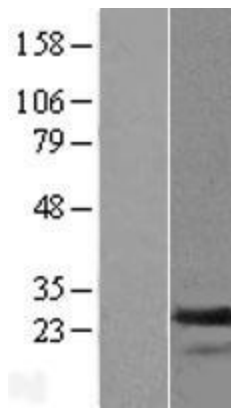
MW: 22.4 kDa

Gene Summary: The protein encoded by this gene is similar to the protein transgelin, which is one of the earliest markers of differentiated smooth muscle. The specific function of this protein has not yet been determined, although it is thought to be a tumor suppressor. Multiple transcript variants encoding different isoforms have been found for this gene. [provided by RefSeq, Mar 2013]

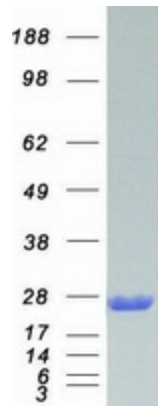
Product images:



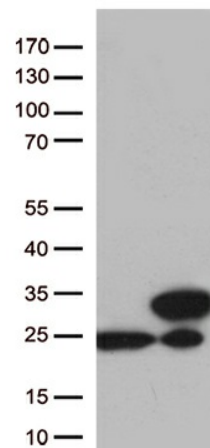
Circular map for RC203473



Western blot validation of overexpression lysate (Cat# [LY418584]) using anti-DDK antibody (Cat# [TA50011-100]). Left: Cell lysates from untransfected HEK293T cells; Right: Cell lysates from HEK293T cells transfected with RC203473 using transfection reagent MegaTran 2.0 (Cat# [TT210002]).



Coomassie blue staining of purified TAGLN2 protein (Cat# [TP303473]). The protein was produced from HEK293T cells transfected with TAGLN2 cDNA clone (Cat# RC203473) using MegaTran 2.0 (Cat# [TT210002]).



HEK293T cells were transfected with the pCMV6-ENTRY control (Cat# [PS100001], Left lane) or pCMV6-ENTRY TAGLN2 (Cat# RC203473, Right lane) cDNA for 48 hrs and lysed. Equivalent amounts of cell lysates (5 ug per lane) were separated by SDS-PAGE and immunoblotted with anti-TAGLN2 (Cat# [TA812766])(1:500). Positive lysates [LY418584] (100ug) and [LC418584] (20ug) can be purchased separately from OriGene.