

Product datasheet for **RC203471**

MAD1 (MAD1L1) (NM_003550) Human Tagged ORF Clone

Product data:

Product Type:	Expression Plasmids
Product Name:	MAD1 (MAD1L1) (NM_003550) Human Tagged ORF Clone
Tag:	Myc-DDK
Symbol:	MAD1
Synonyms:	MAD1; PIG9; TP53I9; TXBP181
Mammalian Cell Selection:	Neomycin
Vector:	pCMV6-Entry (PS100001)
E. coli Selection:	Kanamycin (25 ug/mL)



[View online »](#)

ORF Nucleotide
Sequence:

>RC203471 ORF sequence
Red=Cloning site Blue=ORF Green=Tags(s)

TTTTGTAATACGACTCACTATAGGGCGGCCGGAATTCGTCGACTGGATCCGGTACCGAGGAGATCTGCC
GCC**CGGATCGCC**

ATGGAAGACCTGGGGAAAAACCATGGTTTTATCCACCCTGAGATCTTTGAACAACTTCATCTCTCAGC
GTGTGGAGGGAGGCTCTGGACTGGATATTTCTACCTCGGCCCCAGGTTCTCTGCAGATGCAGTACCAGCA
GAGCATGCAGCTGGAGGAAAGAGCAGAGCAGATCCGTTTGAAGTCCCACCTCATCCAGGTGGAGCGGGAG
AAAATGCAGATGGAGCTGAGTCACAAGAGGGCTCGAGTGGAGCTGGAGAGAGCAGCCAGCACCAGTGCCA
GGAACACGAGCGTGAGGTGACCCGAACCAGGAGCTCCTGACGCGCATCCGGCAGCTTCAGGAGCGGGA
GGCCGGGGCGGAGGAGAAGATGCAGGAGCAGCTGGAGCGCAACAGGCAGTGTGAGCAGAACTGGATGCT
GCCAGCAAGAGGCTGCGTGAGAAAGAGGACAGTCTGGCCAGGCTGGCGAGACCATCAACGCACTGAAGG
GGAGGATCTCGGAAGTGCAGTGGAGCGTGTGACCAGGAGATGCGGGTGAAGCGCCTGGAGTCGGAGAA
GCAGGAGCTGCAGGAGCAGCTGGACCTGCAACACAAAAATGCCAGGAAGCCAATCAGAAAAATCCAGGAA
CTCCAGGCCAGCCAAGAAGCAAGAGCAGACCACGAGCAGCAGATTAAGGATCTGGAGCAGAAGCTGTCCC
TGCAAGAGCAGGATGCAGCGATTGTGAAGAATGAAGTCTGAGCTGGTACGGCTCCCTAGGCTGGAACG
GGAGCTGAAGCAGCTGCGGGAGGAGAGCGCCACCTGCGGGAGATGAGAGAGACCAACGGGCTGCTCCAG
GAAGAGCTGGAAGGGCTGCAGAGGAAGCTGGGGCGCCAGGAGAAGATGCAGGAGACGCTGGTTGGCTTG
AGCTGGAGAACGAGAGGCTGCTGGCCAAGCTGCAAAGCTGGGAGAGACTGGACCAGACCATGGGCCTGAG
CATCAGGACTCCAGAAGACCTTTCCAGATTCTGGTTGAGCTGCAGCAGAGGGAGCTTGCCTTGAAGGAC
AAGAACAGCGCCGTCACCAGCAGCGCCCGGGGCTGGAGAAGGCCAGGCAGCAGCTGCAGGAGGAGCTCC
GGCAGGTCAGCGCCAGCTGTTGGAGGAGAGGAAGAAGCGGAGACCCACGAGGCGCTGGCCCGGAGGCT
CCAGAAAACGGGTCTGCTGCTACCAAGGAGCGGGACGGTATGCGGGCCATCCTGGGGTCTACGACAGC
GAGCTGACCCCGCCGAGTACTACCCAGCTGACGCGGCGCATGCGGGAGGCTGAGGATATGGTGCAGA
AGGTGCACAGCCACAGCGCCGAGATGGAGGCTCAGCTGTGCGAGGCCCTGGAGGAGCTGGGAGGCCAGAA
ACAAAGAGCAGACATGCTGGAGATGGAGCTGAAGATGCTGAAGTCTCAGTCCAGCTCTGCCGAACAGAGC
TTCCTGTTCTCCAGGGAGGAGGCGGACAGCTCAGGTTGAAGTTCGAGGAGCTGGAAGGCGAGCGGAGTC
GGCTGGAGGAGGAAAAGAGGATGCTGGAGGCACAGCTGGAGCGGCGAGCTCTGCAGGGTACTATGACCA
GAGCAGGACCAAAGTGTGCACATGAGCCTGAACCCACCAGTGTGCCAGGCAGCGCCTGCGCGAGGAC
CACAGCCAGCTGCAGGCGGAGTGGAGCGACTGCGCGGGCTCCTGCGGCCATGGAGAGAGGAGGCACCG
TCCCAGCCGACCTTGAGGCTGCCGCCGAGTCTGCCATCGTCCAAGGAGGTGGCAGAGCTGAAGAAGCA
GGTGGAGAGTGCCGAGCTGAAGAACCAGCGGCTCAAGGAGTTTTCCAGACCAAGATCCAGGAGTCCCGC
AAGGCCTGCTACACGCTCACCGCTACCAGATCGACATCACACGGAGAACCAGTACCGGCTGACCTCGC
TGTACGCCGAGCACCCAGGCGACTGCCTCATCTTCAAGGCCACCAGCCCTCGGGTTCCAAGATGCAGCT
ACTGGAGACAGAGTTCTCACACCCGTGGGCGAGCTCATCGAGGTGCACCTGCGGCGCCAGGACAGCATC
CCTGCCTCTCAGCTCGCTCACCTCGAGCTCTCAGCCGCCAGACCGTGGCG

ACGCGTACGCGGCCGCTCGAGCAGAACTCATCTCAGAAGAGGATCTGGCAGCAAATGATATCCTGGATT
ACAAGGATGACGACGATAAGGTTTAA

Protein Sequence: >RC203471 protein sequence
Red=Cloning site Green=Tags(s)

```
MEDLGENTMVLSTLRSLNNFISQRVEGGSGLDISTSAPGSLQMQYQQSMQLEERAEQIRSKSHLIQVERE
KMQMELSHKRARVELERAAS TSARNYEREVDRNQELL TRIRQLQEREAGAEKMQEQLERNRQCQNDA
ASKRLREKEDSLAQAGETINALKGRISELQWSVMDQEMRVKRLSEKQELQEQLDLQHKKCQEANQKIQE
LQASQEARADHEQQIKDLEQKLSLQEQDAIVKNMKSELVRLPRLERELKQLREESAHLREMRETNGLLQ
EELEGLQRKLGRQEKMQETLVGLELENERLLAKLQSWERLDQTMGLSIRTPEDLSRFVVELQQRELALKD
KNSAVTSSARGLEKARQQLQEELRQVSGQLLEERKKRETHEALARRLQKRVLLLTKERDGMRAILGSYDS
ELTPAEYSPQLTRRMREAEDMVQKVHSHSAEMEAQLSQALEELGGQKQRADMLEMELKMLKSQSSSAEQS
FLFSREEADTLRLKVEELEGEERSRLEEEKRMLEAQLERRALQGDYDQSRTKVLHMSLNPTSVARQLRED
HSQLQAECERLRGLLRAMERGGTVPADLEAAAASLPSSKEVAELKKQVESAE LKNQRLKEVFQTKIQEFR
KACYTLTGYQIDITTENQYRLTSLYAEHPGDCLIFKATSPSGSKMQLLETEFSHTVGELIEVHLRRQDSI
PAFLSSLTLELFSRQTV
```

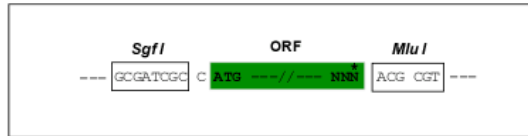
TRTRPLEQKLISEEDLANDILDYKDDDDKV

Chromatograms: https://cdn.origene.com/chromatograms/mk6156_h09.zip

Restriction Sites: SgfI-MluI

Cloning Scheme:

Cloning sites used for ORF Shuttling:



* The last codon before the Stop codon of the ORF

ACCN: NM_003550

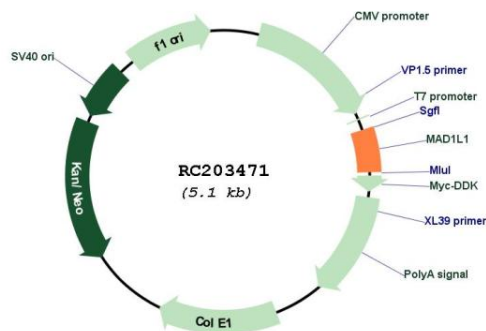
ORF Size: 2154 bp

OTI Disclaimer: The molecular sequence of this clone aligns with the gene accession number as a point of reference only. However, individual transcript sequences of the same gene can differ through naturally occurring variations (e.g. polymorphisms), each with its own valid existence. This clone is substantially in agreement with the reference, but a complete review of all prevailing variants is recommended prior to use. [More info](#)

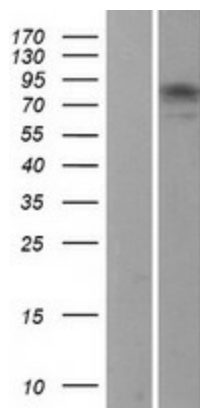
OTI Annotation: This clone was engineered to express the complete ORF with an expression tag. Expression varies depending on the nature of the gene.

Components:	The ORF clone is ion-exchange column purified and shipped in a 2D barcoded Matrix tube containing 10ug of transfection-ready, dried plasmid DNA (reconstitute with 100 ul of water).
Reconstitution Method:	<ol style="list-style-type: none"> 1. Centrifuge at 5,000xg for 5min. 2. Carefully open the tube and add 100ul of sterile water to dissolve the DNA. 3. Close the tube and incubate for 10 minutes at room temperature. 4. Briefly vortex the tube and then do a quick spin (less than 5000xg) to concentrate the liquid at the bottom. 5. Store the suspended plasmid at -20°C. The DNA is stable for at least one year from date of shipping when stored at -20°C.
RefSeq:	<u>NM_003550.3</u>
RefSeq Size:	2754 bp
RefSeq ORF:	2157 bp
Locus ID:	8379
UniProt ID:	<u>Q9Y6D9</u>
Cytogenetics:	7p22.3
Protein Families:	Druggable Genome
Protein Pathways:	Cell cycle
MW:	83.1 kDa
Gene Summary:	MAD1L1 is a component of the mitotic spindle-assembly checkpoint that prevents the onset of anaphase until all chromosome are properly aligned at the metaphase plate. MAD1L1 functions as a homodimer and interacts with MAD2L1. MAD1L1 may play a role in cell cycle control and tumor suppression. Alternative splicing results in multiple transcript variants. [provided by RefSeq, Jan 2015]

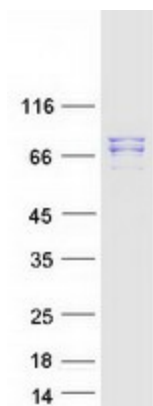
Product images:



Circular map for RC203471



Western blot validation of overexpression lysate (Cat# [LY401184]) using anti-DDK antibody (Cat# [TA50011-100]). Left: Cell lysates from untransfected HEK293T cells; Right: Cell lysates from HEK293T cells transfected with RC203471 using transfection reagent MegaTran 2.0 (Cat# [TT210002]).



Coomassie blue staining of purified MAD1L1 protein (Cat# [TP303471]). The protein was produced from HEK293T cells transfected with MAD1L1 cDNA clone (Cat# RC203471) using MegaTran 2.0 (Cat# [TT210002]).