

## Product datasheet for **RC203469**

### ARL3 (NM\_004311) Human Tagged ORF Clone

#### Product data:

**Product Type:** Expression Plasmids  
**Product Name:** ARL3 (NM\_004311) Human Tagged ORF Clone  
**Tag:** Myc-DDK  
**Symbol:** ARL3  
**Synonyms:** ARFL3; JBTS35; RP83  
**Mammalian Cell Selection:** Neomycin  
**Vector:** pCMV6-Entry (PS100001)  
**E. coli Selection:** Kanamycin (25 ug/mL)  
**ORF Nucleotide Sequence:** >RC203469 ORF sequence  
Red=Cloning site Blue=ORF Green=Tags(s)

TTTTGTAATACGACTCACTATAGGGCGGCCGGAATTCGTCGACTGGATCCGGTACCGAGGAGATCTGCC  
GCC**CGATCGCC**

ATGGGCTTGTCTCAATTTTGGCAAGTTGAAAAGTGCACCAGACCAGGAGGTGAGAATACTTCTCCTGG  
GCTTGGATAATGCTGGCAAGACCACTCTTCTGAAGCAGCTTGCATCTGAAGACATCAGCCACATCACACC  
TACACAGGGTTTCAACATCAAAGTGTACAATACAAGGTTTTAACTGAATGTATGGGACATTGGTGGA  
CAGAGGAAAATCAGACCATACTGGAAGAATTATTTGAAAATACCGATATCTTATATATGTAATCGACA  
GTGCAGACAGAAAAGATTTGAAGAGACGGTCTAGGAACTAGCGGAATTACTGGAGGAAGAAAACTAAG  
TTGTGTGCCAGTGTCTATCTTTGCTAATAAGCAGGATTTGCTCACAGCAGCCCTGCCTCTGAAATTGCA  
GAAGGACTGAACCTGCATACCATCCGCGACCGAGTCTGGCAGATCCAGTCTTGCTCAGCTCTCACAGGAG  
AGGGCGTTCAGGATGGCATGAACTGGGTCTGAAAAATGTCAATGCAAAGAAGAAA

**ACGCGT**ACGCGGCCGCTCGAGCAGAACTCATCTCAGAAGAGGATCTGGCAGCAAATGATATCCTGGATT  
ACAAGGATGACGACGATAAGGTTTAA

**Protein Sequence:** >RC203469 protein sequence  
Red=Cloning site Green=Tags(s)

MGLLSILRKLKSPDQEVRIILLGLDNAGKTTLLKQLASEDISHITPTQGFNIKSVQSQGFKLNVDIGG  
QRKIRPYWKNYFENDILIIYVIDSADRKRFEETGGELAELEEEKLSVPLVIFANKQDLLTAAPASEIA  
EGLNLHTIRDRVWQIQSCSALTGEGVQDGMNVCKNVNAKKK

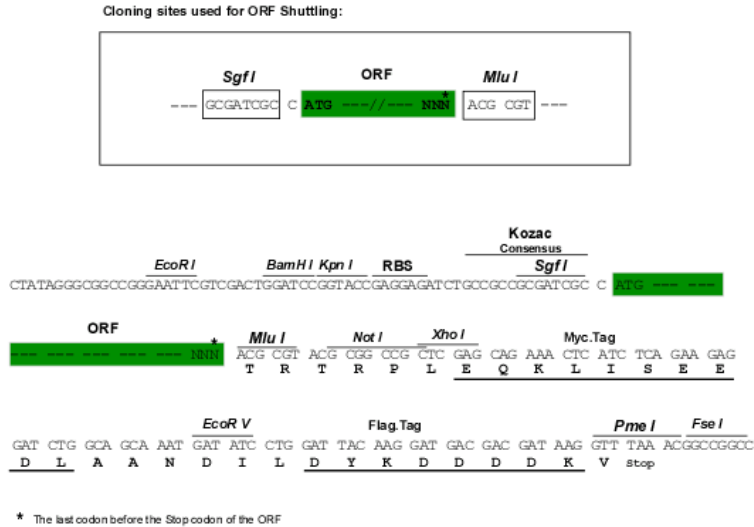
**TRTRPLEQKLISEEDLAANDILDYKDDDDKV**

**Chromatograms:** [https://cdn.origene.com/chromatograms/mk6428\\_e05.zip](https://cdn.origene.com/chromatograms/mk6428_e05.zip)



Restriction Sites: SgfI-MluI

Cloning Scheme:



ACCN: NM\_004311

ORF Size: 546 bp

OTI Disclaimer: The molecular sequence of this clone aligns with the gene accession number as a point of reference only. However, individual transcript sequences of the same gene can differ through naturally occurring variations (e.g. polymorphisms), each with its own valid existence. This clone is substantially in agreement with the reference, but a complete review of all prevailing variants is recommended prior to use. [More info](#)

OTI Annotation: This clone was engineered to express the complete ORF with an expression tag. Expression varies depending on the nature of the gene.

Components: The ORF clone is ion-exchange column purified and shipped in a 2D barcoded Matrix tube containing 10ug of transfection-ready, dried plasmid DNA (reconstitute with 100 ul of water).

Reconstitution Method:

1. Centrifuge at 5,000xg for 5min.
2. Carefully open the tube and add 100ul of sterile water to dissolve the DNA.
3. Close the tube and incubate for 10 minutes at room temperature.
4. Briefly vortex the tube and then do a quick spin (less than 5000xg) to concentrate the liquid at the bottom.
5. Store the suspended plasmid at -20°C. The DNA is stable for at least one year from date of shipping when stored at -20°C.

RefSeq: [NM\\_004311.4](#)

RefSeq Size: 3891 bp

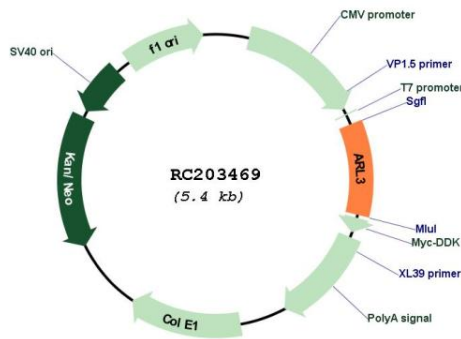
RefSeq ORF: 549 bp

Locus ID: 403

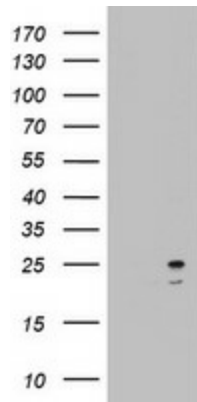
UniProt ID: [P36405](#)

**Cytogenetics:** 10q24.32  
**Domains:** SAR, ARF, arf  
**Protein Families:** Druggable Genome  
**MW:** 20.5 kDa  
**Gene Summary:** ADP-ribosylation factor-like 3 is a member of the ADP-ribosylation factor family of GTP-binding proteins. ARL3 binds guanine nucleotides but lacks ADP-ribosylation factor activity. [provided by RefSeq, Jul 2008]

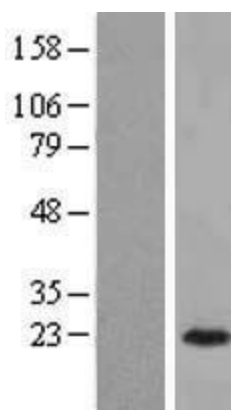
**Product images:**



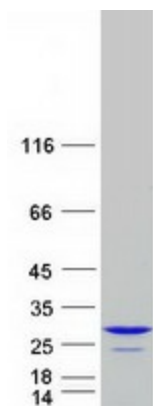
Circular map for RC203469



HEK293T cells were transfected with the pCMV6-ENTRY control (Cat# [PS100001], Left lane) or pCMV6-ENTRY ARL3 (Cat# RC203469, Right lane) cDNA for 48 hrs and lysed. Equivalent amounts of cell lysates (5 ug per lane) were separated by SDS-PAGE and immunoblotted with anti-ARL3 (Cat# [TA803087]). Positive lysates [LY418068] (100ug) and [LC418068] (20ug) can be purchased separately from OriGene.



Western blot validation of overexpression lysate (Cat# [LY418068]) using anti-DDK antibody (Cat# [TA50011-100]). Left: Cell lysates from untransfected HEK293T cells; Right: Cell lysates from HEK293T cells transfected with RC203469 using transfection reagent MegaTran 2.0 (Cat# [TT210002]).



Coomassie blue staining of purified ARL3 protein (Cat# [TP303469]). The protein was produced from HEK293T cells transfected with ARL3 cDNA clone (Cat# RC203469) using MegaTran 2.0 (Cat# [TT210002]).