

## Product datasheet for **RC203460**

### LSM2 (NM\_021177) Human Tagged ORF Clone

#### Product data:

**Product Type:** Expression Plasmids  
**Product Name:** LSM2 (NM\_021177) Human Tagged ORF Clone  
**Tag:** Myc-DDK  
**Symbol:** LSM2  
**Synonyms:** C6orf28; G7B; snRNP; YBL026W  
**Mammalian Cell Selection:** Neomycin  
**Vector:** pCMV6-Entry (PS100001)  
**E. coli Selection:** Kanamycin (25 ug/mL)  
**ORF Nucleotide Sequence:** >RC203460 ORF sequence  
Red=Cloning site Blue=ORF Green=Tags(s)

TTTTGTAATACGACTCACTATAGGGCGCCGGGAATTCGTCGACTGGATCCGGTACCGAGGAGATCTGCC  
GCC**CGATCGCC**

ATGCTCTTCTATTCTTTTTCAAGTCCCTTGTGGGCAAGGATGTGGTCGTGGAATAAAGAATGACCTGA  
GCATCTGTGGAACCTCCATTCTGTGGATCAGTATCTCAACATCAAATAACTGACATCAGTGTCACAGA  
CCCTGAGAAATACCCTCACATGTTATCAGTGAAGAACTGCTTCATTCGGGGCTCAGTGGTCCGATACGTG  
CAGCTGCCAGCAGATGAGGTCGACACACAGTTGCTACAGGATGCGCAAGGAAGGAAAGCCCTGCAGCAGA  
AACAG

**ACGCGT**ACGCGGCCGCTCGAGCAGAAACTCATCTCAGAAGAGGATCTGGCAGCAAATGATATCCTGGATT  
ACAAGGATGACGACGATAAGGTTTAA

**Protein Sequence:** >RC203460 protein sequence  
Red=Cloning site Green=Tags(s)  
MLFYFFKSLVGKDVVVELKNDLSICGTLHSVDQYLNLIKLTDISVTDPEKYPHMLSVKNCFIRGSVVRYY  
QLPADEVDTQLLQDAARKEALQQKQ

**TR**TRPLEQKLISEEDLAANDILDYKDDDDKV

**Chromatograms:** [https://cdn.origene.com/chromatograms/mk6424\\_c08.zip](https://cdn.origene.com/chromatograms/mk6424_c08.zip)

**Restriction Sites:** SgfI-MluI



[View online »](#)

**Cloning Scheme:**


**ACCN:** NM\_021177

**ORF Size:** 285 bp

**OTI Disclaimer:** The molecular sequence of this clone aligns with the gene accession number as a point of reference only. However, individual transcript sequences of the same gene can differ through naturally occurring variations (e.g. polymorphisms), each with its own valid existence. This clone is substantially in agreement with the reference, but a complete review of all prevailing variants is recommended prior to use. [More info](#)

**OTI Annotation:** This clone was engineered to express the complete ORF with an expression tag. Expression varies depending on the nature of the gene.

**Components:** The ORF clone is ion-exchange column purified and shipped in a 2D barcoded Matrix tube containing 10ug of transfection-ready, dried plasmid DNA (reconstitute with 100 ul of water).

- Reconstitution Method:**
1. Centrifuge at 5,000xg for 5min.
  2. Carefully open the tube and add 100ul of sterile water to dissolve the DNA.
  3. Close the tube and incubate for 10 minutes at room temperature.
  4. Briefly vortex the tube and then do a quick spin (less than 5000xg) to concentrate the liquid at the bottom.
  5. Store the suspended plasmid at -20°C. The DNA is stable for at least one year from date of shipping when stored at -20°C.

**RefSeq:** [NM\\_021177.5](#)

**RefSeq Size:** 880 bp

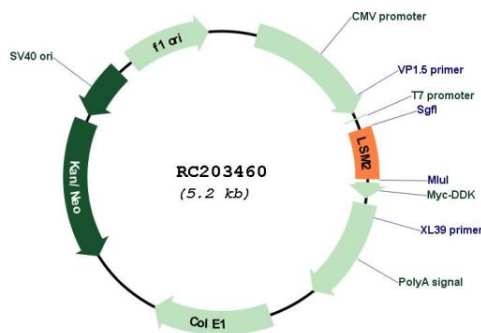
**RefSeq ORF:** 288 bp

**Locus ID:** 57819

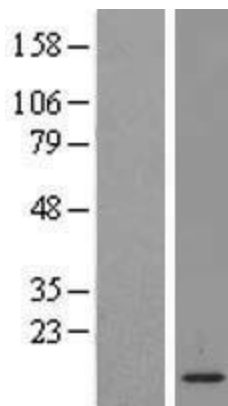
**UniProt ID:** [Q9Y333](#)  
**Cytogenetics:** 6p21.33  
**Domains:** Sm  
**Protein Pathways:** RNA degradation, Spliceosome  
**MW:** 10.8 kDa

**Gene Summary:** This gene encodes a member of the LSM family of RNA-binding proteins. LSM proteins form stable heteromers that bind specifically to the 3'-terminal oligo(U) tract of U6 snRNA and may play a role in pre-mRNA splicing by mediating U4/U6 snRNP formation. Pseudogenes of this gene are located on the short arm of chromosomes 6 and 19. [provided by RefSeq, Nov 2011]

### Product images:



Circular map for RC203460



Western blot validation of overexpression lysate (Cat# [LY412045]) using anti-DDK antibody (Cat# [TA50011-100]). Left: Cell lysates from untransfected HEK293T cells; Right: Cell lysates from HEK293T cells transfected with RC203460 using transfection reagent MegaTran 2.0 (Cat# [TT210002]).