

Product datasheet for **RC203458**

PRMT5 (NM_006109) Human Tagged ORF Clone

Product data:

Product Type:	Expression Plasmids
Product Name:	PRMT5 (NM_006109) Human Tagged ORF Clone
Tag:	Myc-DDK
Symbol:	PRMT5
Synonyms:	HRMT1L5; HSL7; IBP72; JBP1; SKB1; SKB1Hs
Mammalian Cell Selection:	Neomycin
Vector:	pCMV6-Entry (PS100001)
E. coli Selection:	Kanamycin (25 ug/mL)



[View online »](#)

ORF Nucleotide
Sequence:

>RC203458 ORF sequence
Red=Cloning site Blue=ORF Green=Tags(s)

TTTTGTAATACGACTCACTATAGGGCGGCCGGGAATTCGTCGACTGGATCCGGTACCGAGGAGATCTGCC
GCC**CGGATCGCC**

ATGGCGGCGATGGCGGTGCGGGGTGCTGGTGGGAGCCCGGTGCCAGCGGAGGGACCTGAATTGCGTCC
CCGAAATAGCTGACACACTAGGGGCTGTGGCCAAGCAGGGGTTGATTTCTCTGCATGCCTGTCTTCCA
TCCGCGTTTCAAGAGGGAGTTTCATTACAGAACCTGCTAAGAATCGGCCCGGTCCCCAGACACGATCAGAC
CTACTGCTGTGAGGAAGGACTGGAATACGCTAATTGTGGGAAAGCTTTCTCCATGGATTCGTCAGACT
CAAAAGTGAGAGAAGATTCGACAGAACTCCGAGGCGCCATGTTACAGGAGCTGAATTTGGTGCATATTT
GGGTCTTCCAGCTTTCCTGCTGCCCTTAATCAGGAAGATAACACCAACCTGGCCAGAGTTTTGACCAAC
CACATCCACACTGGCCATCACTTTCATGTTCTGGATGCGGGTACCCTTGGTGGCACCAGAGGACCTGA
GAGATGATATAATTGAGAATGCACCAACTACACACACAGAGGAGTACAGTGGGGAGGAGAAAACGTGGAT
GTGGTGGCACAACCTCCGACTTTGTGTGACTATAGTAAGAGGATTGCAGTGGCTTTGAAATGGGGCT
GACCTCCCATCTAATCATGTCTTTCATGCTGGCTTGGGGAGCCCATCAAAGCAGCCATTCTCCCCACTA
GCATTTTCTGACCAATAAGAAGGGATTTCTGTTCTTTCTAAGATGCACCAGAGGCTCATCTTCCGGCT
CCTCAAGTTGGAGGTGCAGTTCATCATCACAGGCCAACCAACCACTCAGAGAAGGAGTTCTGCTCCTAC
CTCCAATACCTGGAACTTAAGCCAGAACCGTCTCCACCTAATGCCTATGAACTTTTCCAAGGGCT
ATGAAGACTATCTGCAGTCCCGCTTACGCCACTGATGGACAATCTGGAATCTCAGACATATGAAGTGT
TGAAAAGGACCCCATCAAATACTCTCAGTACCAGCAGGCCATCTATAAATGTCTGCTAGACCGAGTACCA
GAAGAGGAGAAGGATACCAATGTCCAGGTAAGTGGTGGTGGGAGCAGGACGGGGACCCCTGGTGAACG
CTTCCCTGCGGGCAGCCAAGCAGGCCACCGGCCGATAAAGCTGTATGCTGTGGAGAAAAACCCAAATGC
CGTGGTGACGCTAGAGAAGTGGCAGTTTGAAGAATGGGGAAGCCAAGTGACCGTAGTCTCATCAGACATG
AGGGAATGGGTGGCTCCAGAGAAAAGCAGACATCATTGTCAGTGAGCTTCTGGGCTCATTTGCTGACAATG
AATTGTCGCTGAGTGCCTGGATGGAGCCAGCACTTCTAAAAGATGATGGTGTGAGCATCCCCGGGGA
GTACACTTCTTTCTGGCTCCCATCTTCTCCTCAAGCTGTACAATGAGGTCCGAGCCTGTAGGGAGAAG
GACCGTGACCCTGAGGCCAGTTTGAGATGCCTTATGTGGTACGGCTGCACAACCTCCACCAGCTCTCTG
CACCCAGCCCTGTTTACCTTCAGCCATCCCAACAGAGATCCTATGATTGACAACAACCGCTATTGCAC
CTTGGAATTTCTGTGGAGGTGAACACAGTACTACATGGCTTTGCCGGCTACTTTGAGACTGTGCTTTAT
CAGGACATCACTCTGAGTATCCGTCCAGAGACTACTCTCCTGGGATGTTCTCATGGTTTCCCATCTCT
TCCCTATTAAGCAGCCATAACGGTACGTGAAGGCCAAACCATCTGTGTGCGTTTTCTGGCGATGCAGCAA
TTCCAAGAAGGTGTGGTATGAGTGGGCTGTGACAGCACCAGTCTGTTCTGCTATTCATAACCCACAGGC
CGCTCATATACCATTTGGCTC

ACGCGTACGCGGCCGCTCGAGCAGAAACTCATCTCAGAAGAGGATCTGGCAGCAAATGATATCCTGGATT
ACAAGGATGACGACGATAAGGTTTAA

Protein Sequence: >RC203458 protein sequence
Red=Cloning site Green=Tags(s)

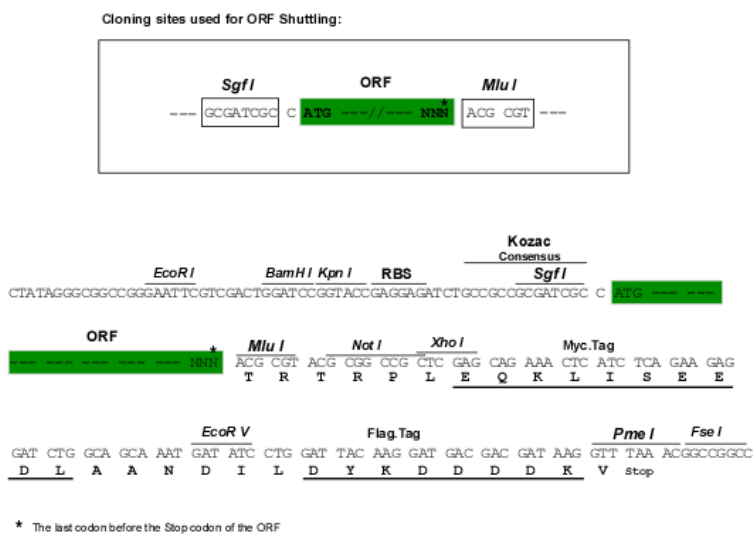
MAAMAVGGAGGSRVSSGRDLNCPVEIADTLGAVAKQGFDFLCMPVFHPRFKREFIQEPAKNRPGPQTRSD
 LLLSGRDWNTLIVGKLSPIRPSKVEKIRRNSEAAMLQELNFGAYLGLPAFLPLNQEDNTNLARVLTN
 HIHTGHSSMFWMRVPLVAPEDLRDDIIENAPTTHTTEYSGEETWMMWHNFRTLCDYSKRIAVALEIGA
 DLPSNHVIDRWLGEPIKAAIILPTSIFLTNKKGFPVL SKMHQRLIFRLLKLEVFIIITGTNHHSEKEFCSY
 LQYLEYLSQNRPPNAYELFAKGYEDYLSPLQPLMDNLESQTYEVFEKDPKIKYSYQQAIYKCLLDRVP
 EEEKDTNVQVLMVLGAGRGLVNASLRAAQADRRIKLYAVEKNPNAVVTLENWQFEEWGSQVTVVSSDM
 REWVAPEKADIIYSELLGSFADNELSPECLDGAQHFLKDDGVSIPGEYTSFLAPISSSKLYNEVRACREK
 DRDPEAQFEMPYVVR LHNHQLSAPQPCFTFSHPNRDPMIDNNRYCTLEFPVEVNTVLHGFAGYFETVLY
 QDITLSIRPETHSPGMFSWFPILFPIKQPITVREGQTCVRFWRCSNSKKVWYEWAVTAPVCSAIHNPTG
 RSYTIGL

TRTRPLEQKLISEEDLANDILDYKDDDDKV

Chromatograms: https://cdn.origene.com/chromatograms/mk6238_e01.zip

Restriction Sites: SgfI-MluI

Cloning Scheme:



ACCN: NM_006109

ORF Size: 1911 bp

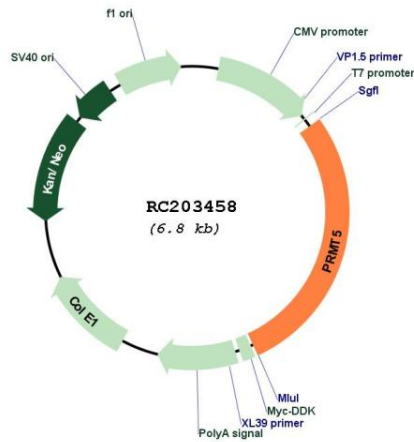
OTI Disclaimer: The molecular sequence of this clone aligns with the gene accession number as a point of reference only. However, individual transcript sequences of the same gene can differ through naturally occurring variations (e.g. polymorphisms), each with its own valid existence. This clone is substantially in agreement with the reference, but a complete review of all prevailing variants is recommended prior to use. [More info](#)

OTI Annotation: This clone was engineered to express the complete ORF with an expression tag. Expression varies depending on the nature of the gene.

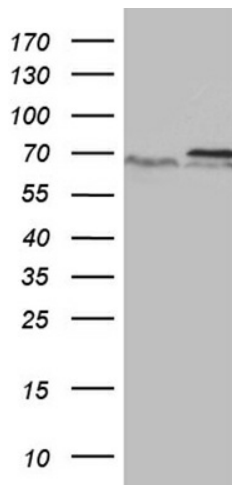
Components: The ORF clone is ion-exchange column purified and shipped in a 2D barcoded Matrix tube containing 10ug of transfection-ready, dried plasmid DNA (reconstitute with 100 ul of water).

Reconstitution Method:	<ol style="list-style-type: none">1. Centrifuge at 5,000xg for 5min.2. Carefully open the tube and add 100ul of sterile water to dissolve the DNA.3. Close the tube and incubate for 10 minutes at room temperature.4. Briefly vortex the tube and then do a quick spin (less than 5000xg) to concentrate the liquid at the bottom.5. Store the suspended plasmid at -20°C. The DNA is stable for at least one year from date of shipping when stored at -20°C.
Note:	Plasmids are not sterile. For experiments where strict sterility is required, filtration with 0.22um filter is required.
RefSeq:	NM_006109.5
RefSeq Size:	2541 bp
RefSeq ORF:	1914 bp
Locus ID:	10419
UniProt ID:	O14744
Cytogenetics:	14q11.2
Domains:	Skb1
Protein Families:	Stem cell - Pluripotency
MW:	72.7 kDa
Gene Summary:	This gene encodes an enzyme that belongs to the methyltransferase family. The encoded protein catalyzes the transfer of methyl groups to the amino acid arginine, in target proteins that include histones, transcriptional elongation factors and the tumor suppressor p53. This gene plays a role in several cellular processes, including transcriptional regulation, and the assembly of small nuclear ribonucleoproteins. A pseudogene of this gene has been defined on chromosome 4. Alternative splicing results in multiple transcript variants encoding different isoforms. [provided by RefSeq, Sep 2015]

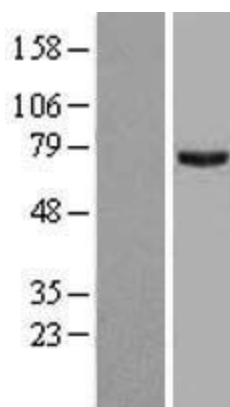
Product images:



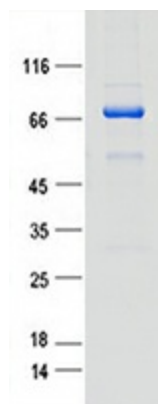
Circular map for RC203458



HEK293T cells were transfected with the pCMV6-ENTRY control (Cat# [PS100001], Left lane) or pCMV6-ENTRY PRMT5 (Cat# RC203458, Right lane) cDNA for 48 hrs and lysed. Equivalent amounts of cell lysates (5 ug per lane) were separated by SDS-PAGE and immunoblotted with anti-PRMT5 (Cat# [TA807620])(1:500). Positive lysates [LY416847] (100ug) and [LC416847] (20ug) can be purchased separately from OriGene.



Western blot validation of overexpression lysate (Cat# [LY416847]) using anti-DDK antibody (Cat# [TA50011-100]). Left: Cell lysates from untransfected HEK293T cells; Right: Cell lysates from HEK293T cells transfected with RC203458 using transfection reagent MegaTran 2.0 (Cat# [TT210002]).



Coomassie blue staining of purified PRMT5 protein (Cat# [TP303458]). The protein was produced from HEK293T cells transfected with PRMT5 cDNA clone (Cat# RC203458) using MegaTran 2.0 (Cat# [TT210002]).