

Product datasheet for **RC203453L4V**

Apg3 (ATG3) (NM_022488) Human Tagged ORF Clone Lentiviral Particle

Product data:

Product Type:	Lentiviral Particles
Product Name:	Apg3 (ATG3) (NM_022488) Human Tagged ORF Clone Lentiviral Particle
Symbol:	Apg3
Synonyms:	APG3; APG3-LIKE; APG3L; PC3-96
Mammalian Cell Selection:	Puromycin
Vector:	pLenti-C-mGFP-P2A-Puro (PS100093)
Tag:	mGFP
ACCN:	NM_022488
ORF Size:	942 bp
ORF Nucleotide Sequence:	The ORF insert of this clone is exactly the same as(RC203453).
OTI Disclaimer:	The molecular sequence of this clone aligns with the gene accession number as a point of reference only. However, individual transcript sequences of the same gene can differ through naturally occurring variations (e.g. polymorphisms), each with its own valid existence. This clone is substantially in agreement with the reference, but a complete review of all prevailing variants is recommended prior to use. More info
OTI Annotation:	This clone was engineered to express the complete ORF with an expression tag. Expression varies depending on the nature of the gene.
RefSeq:	NM_022488.3
RefSeq Size:	1572 bp
RefSeq ORF:	945 bp
Locus ID:	64422
UniProt ID:	Q9NT62
Cytogenetics:	3q13.2
Domains:	Autophagy_N, Autophagy_C
Protein Pathways:	Regulation of autophagy

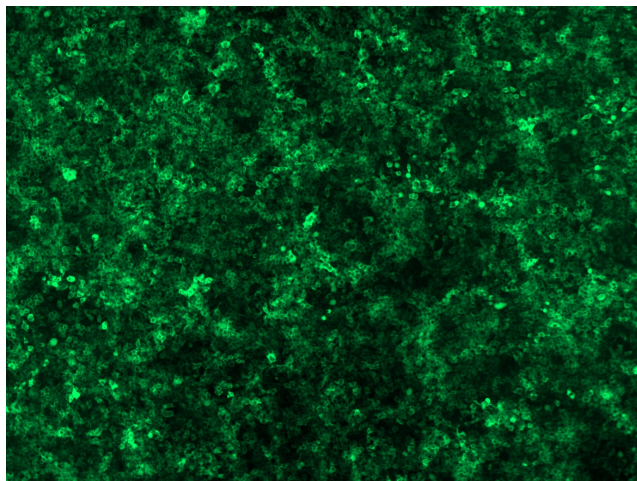


[View online »](#)

MW: 35.9 kDa

Gene Summary: This gene encodes a ubiquitin-like-conjugating enzyme and is a component of ubiquitination-like systems involved in autophagy, the process of degradation, turnover and recycling of cytoplasmic constituents in eukaryotic cells. This protein is known to play a role in regulation of autophagy during cell death. A pseudogene of this gene is located on chromosome 20. Alternative splicing results in multiple transcript variants encoding different isoforms. [provided by RefSeq, Jul 2013]

Product images:



[RC203453L4] was used to prepare Lentiviral particles using [TR30037] packaging kit. HEK293T cells were transduced with RC203453L4V particle to overexpress human ATG3-mGFP fusion protein.