

Product datasheet for **RC203449**

RMC1 (NM_013326) Human Tagged ORF Clone

Product data:

Product Type:	Expression Plasmids
Product Name:	RMC1 (NM_013326) Human Tagged ORF Clone
Tag:	Myc-DDK
Symbol:	RMC1
Synonyms:	C18orf8; HsT2591; Mic-1; MIC1; WDR98
Mammalian Cell Selection:	Neomycin
Vector:	pCMV6-Entry (PS100001)
E. coli Selection:	Kanamycin (25 ug/mL)



[View online »](#)

ORF Nucleotide Sequence:

>RC203449 ORF sequence
 Red=Cloning site Blue=ORF Green=Tags(s)

TTTTGTAATACGACTCACTATAGGGCGGCCGGAATTCGTCGACTGGATCCGGTACCGAGGAGATCTGCC
 GCC**CGCATCGCC**

ATGGGCGAGGAGGACTACTATCTGGAGCTGTGCGAGCGGCCGGTGCAGTTCGAGAAGGCGAACCCCTGTCA
 ACTGCGTCTTCTCGATGAGGCCAACAAAGCAGGTTTTTGCTGTTTCGATCTGGTGGAGCTACTGGCGTGGT
 AGTTAAAGGCCAGATGATAGGAATCCCATCTCATTAGAAATGGATGACAAAGGAGAAGTGAAGTGCATT
 AAGTTTTCTTAGAAAATAAGATATTGGCTGTTTCAGAGGACCTCAAAGACTGTGGATTTTTGTAATTTTA
 TCCCTGATAATCCAGCTGGAATACACACAGGAGTGAAGACTAAGAATGCCAACATTCTAGGATTCTG
 CTGGACTAGTTCAACTGAAATTGTCTTCATAACAGATCAAGGAATCGAATTTTACCAGGTATTACCAGAG
 AAACGGAGTCTGAAACTTTGAAGAGCCACAATCTCAATGTGAATTGGTACATGTACTGCCCGAGAGCG
 CCGTGATCTTGCTGTCTACCACGGTCTGGAGAATGCTCCTGCAGCCTTTTCACTTAGGGCTGGCACTAT
 GTCGAAGCTGCCAAATTTGAGATTGAATTACCAGCTGCGCCTAAGTCAACTAAACCCAGCCTTTCCGAA
 AGAGACATCGCAATGGCTACCATATACGGGCAGCTGTATGTTCTTCTTTCGAGGCATCATTCTCGGACCT
 CCAACAGCACAGGAGCGGAGGTGGTCTCTATCATCTACCACGAGAAGGTGCCTGTAAAAAGATGCACAT
 ATTGAAGTTAAATAGGACGGGAAAGTTTGCCTGAACGTGGTGGACAACCTGGTAGTCGTGCATCATCAG
 GATACAGAGACATCGGTAATATTCGATATCAAGTTACGGGGAGAGTTTGACGGCTCCGTTACCTCCACC
 ACCCGTGCTTCCCGCTCGATCGATCCAGCCCTATCAGATCCCCATCACAGGTCCTGTGCCGTGACCAG
 CCAGTCTCCTGTTCCATGAACTCTATTCTTCATCTTGGATTGTCTTCAACCTGACATCATTATCAGC
 GCAAGCCAAGGTTACCTCTGGAACCTCCAAGTAACTTGAGCCCATAGTAAATCTTACCAGACAAAG
 GAAGACTCATGGACTTTCTCCTCCAGAGAAAGGAATGCAAGATGGTCATCCTGTCTGTCTGTTACAGAT
 GTTAAGTGAGTCAGACAGAGCATCGCTGCCCCTGATAGCCACTGTTTTTGATAAACTCAACCATGAGTAT
 AAAAAAGTACCTGGATGCCGAGCAGAGTTATGCGATGGCGGTGGAAGCAGGGCAGGCCGAAGCAGCCCGC
 TCCTCAAGAGGCCGGTGCAGGACCCAGGCGGTGCTGGACCAGTCAAGTGTACACCCATGTCTGTGACG
 CTTTGTGGAAAAGGAGATGCCTCATAAATTTGTGATAGCCGTGCTGATGGAATACATTGTTCTCTT
 AACCAGTTTCAGATTGCAGTACAGCATTACCTACATGAACTTGTATCAAAACCTTGTCCAGCACAAAC
 TCTTTTATATGCTGCATCAGTTCCTGCAGTACCACGTCTCAGCGACTCCAAACCTTTGGCTTGTCTGCT
 GTTATCCCTAGAGAGTTTCTATCCTCCTGCTCATCAGCTATCTCTGGACATGCTGAAGCGACTTTCAACA
 GCAAATGATGAAATAGTAGAAGTTCTCCTTTCCAAACACCAAGTGTAGCTGCCTTAAGGTTTATCCGGG
 GCATTGGTGGCCATGACAACATTTCTGCACGAAAATTTTAGATGCTGCAAAGCAGACTGAAGACAACAT
 GCTTTTCTATAACAATATCCGCTTTTTTGAACAGCGAAACCAGCGTTTGGAGGGAGCCCAATTTACACA
 CCAGGGGAACACTGTGAAGAACATGTTGCTTTTTTCAAACAGATTTTTGGAGACCAAGCTCTAATGAGGC
 CTACAACATTC

ACGCGTACGCGGCCGCTCGAGCAGAACTCATCTCAGAAGAGGATCTGGCAGCAATGATATCCTGGATT
 ACAAGGATGACGACGATAAGGTTTAA

Protein Sequence: >RC203449 protein sequence
Red=Cloning site Green=Tags(s)

```

MGEEDYYLELCERPVQFEKANPVCVFFDEANKQVFAVRSGGATGVVVKGPDDRNPISFRMDDKGEVKCI
KFSLENKILAVQRTSKTVDFCNFIPDNSQLEYTQECKTKNANILGFCWTSSTEIVFITDQGIEFYQVLPE
KRSLKLLKSHNLNVNMYMCPESAVILLSTTVLENLVLPFHFRAGTMSKLPKFEIELPAAPKSTKPSLSE
RDIAMATIYGQLYVFLRHHSRSTSNSTGAEVVL YHLPREGACKMHILKLNRTGKFA LNVDNLV VVHHQ
DTETSVIFDIKLRGEFDGSVTFHHPVLPARSIQPYQIPITGPAAVTSQSPVPCPLYSSSWIVFQPDIIIS
ASQGYLWNLQVKLEPIVNL L PDKGRLMDFLLQRKECKM VILSVCSQMLSESDRASLPVIATVFDKLNHEY
KKYLD AEQSYAMAVEAGQSRSSPLLKRPVRTQAVLDQSDVYTHVLSAFVEKKEMPHKFVIAVLMEYIRSL
NQFQIAVQH YLHELVIKTLVQHNLFYMLHQFLQYHVLSDSKPLACLLLSLESFYPPAHLSDMLKRLST
ANDEIVEVLLSKHQVLAALRFIRGIGGHDNISARKFLDAAKQTEDNMLFYTIFRFFEQRNQLRGSFNPT
PGEHCEEHVAFKQIFGDQALMRPTTF
    
```

TRTRPLEQKLISEEDLAANDILDYKDDDDKV

Chromatograms: https://cdn.origene.com/chromatograms/mk6413_g10.zip

Restriction Sites: SgfI-MluI

Cloning Scheme:



ACCN: NM_013326

ORF Size: 1971 bp

OTI Disclaimer: The molecular sequence of this clone aligns with the gene accession number as a point of reference only. However, individual transcript sequences of the same gene can differ through naturally occurring variations (e.g. polymorphisms), each with its own valid existence. This clone is substantially in agreement with the reference, but a complete review of all prevailing variants is recommended prior to use. [More info](#)

OTI Annotation: This clone was engineered to express the complete ORF with an expression tag. Expression varies depending on the nature of the gene.

Components: The ORF clone is ion-exchange column purified and shipped in a 2D barcoded Matrix tube containing 10ug of transfection-ready, dried plasmid DNA (reconstitute with 100 ul of water).

Reconstitution Method:

1. Centrifuge at 5,000xg for 5min.
2. Carefully open the tube and add 100ul of sterile water to dissolve the DNA.
3. Close the tube and incubate for 10 minutes at room temperature.
4. Briefly vortex the tube and then do a quick spin (less than 5000xg) to concentrate the liquid at the bottom.
5. Store the suspended plasmid at -20°C. The DNA is stable for at least one year from date of shipping when stored at -20°C.

Note: Plasmids are not sterile. For experiments where strict sterility is required, filtration with 0.22um filter is required.

RefSeq: [NM_013326.5](#)

RefSeq Size: 2226 bp

RefSeq ORF: 1974 bp

Locus ID: 29919

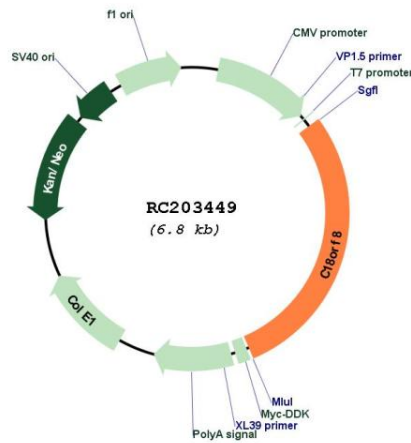
UniProt ID: [Q96DM3](#)

Cytogenetics: 18q11.2

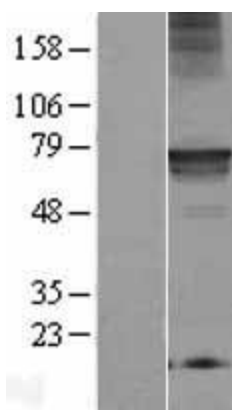
MW: 75 kDa

Gene Summary: This gene encodes a colon cancer associated protein. [provided by RefSeq, Jan 2013]

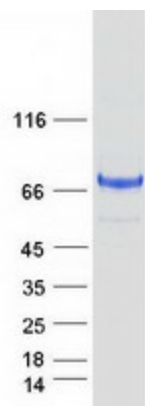
Product images:



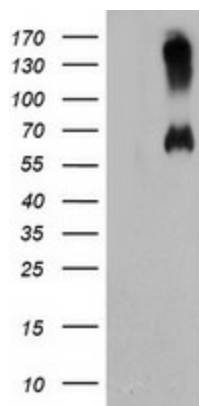
Circular map for RC203449



Western blot validation of overexpression lysate (Cat# [LY415628]) using anti-DDK antibody (Cat# [TA50011-100]). Left: Cell lysates from untransfected HEK293T cells; Right: Cell lysates from HEK293T cells transfected with RC203449 using transfection reagent MegaTran 2.0 (Cat# [TT210002]).



Coomassie blue staining of purified RMC1 protein (Cat# [TP303449]). The protein was produced from HEK293T cells transfected with RMC1 cDNA clone (Cat# RC203449) using MegaTran 2.0 (Cat# [TT210002]).



HEK293T cells were transfected with the pCMV6-ENTRY control (Cat# [PS100001], Left lane) or pCMV6-ENTRY C18orf8 (Cat# RC203449, Right lane) cDNA for 48 hrs and lysed. Equivalent amounts of cell lysates (5 ug per lane) were separated by SDS-PAGE and immunoblotted with anti-C18orf8 (Cat# [TA504561]). Positive lysates [LY415628] (100ug) and [LC415628] (20ug) can be purchased separately from OriGene.