

Product datasheet for **RC203448**

BANP (NM_017869) Human Tagged ORF Clone

Product data:

Product Type:	Expression Plasmids
Product Name:	BANP (NM_017869) Human Tagged ORF Clone
Tag:	Myc-DDK
Symbol:	BANP
Synonyms:	BEND1; SMAR1; SMARBP1
Mammalian Cell Selection:	Neomycin
Vector:	pCMV6-Entry (PS100001)
E. coli Selection:	Kanamycin (25 ug/mL)



[View online »](#)

ORF Nucleotide Sequence:

>RC203448 ORF sequence
 Red=Cloning site Blue=ORF Green=Tags(s)

TTTTGTAATACGACTCACTATAGGGCGGCCGGAATTCGTCGACTGGATCCGGTACCGAGGAGATCTGCC
 GCC**GCGATCGCC**

ATGATGTCGGAACACGACCTGGCCGATGTGGTTACAGATTGCAGTGAAGACCTGAGCCCTGACCACCCAG
 TTGTTTTGGAGAATCATGTAGTGACAGATGAAGACGAACCTGCTTTGAAACGCCAGCGACTAGAAATCAA
 TTGCCAGGATCCATCTATAAAGTCATTCCTGTATTCCATCAACCAGACAATCTGCTTGCGGTTGGATAGC
 ATTGAAGCAAATGCAAGCCCTGGAGGCTACTTGTAATCCTTAGAAGAAAAGCTGGATCTGGTCACGA
 ACAAGCAGCACAGCCCCATCCAGGTCCCATGGTGGCCGGCTCCCCTCTCGGGGCAACCCAGACGTGCAA
 CAAAGTGCATGCGCTGTGCCTGGGCGTCGGCAGAACACCATTGTGGTGAAGGTGCCGGGCAAGAAGAC
 AGCCACCACGAGGACGGGAGAGCGGCTCGGAGGCCAGCGACTCTGTGTCCAGCTGTGGCAGGCGGGCA
 GTCAGAGCATCGGAGCAACGTCAGCTCATCACCTGAACTCGGAAGAGGACTACCCCAATGGCACCTG
 GCTGGGCGACGAGAACAACCCCGAGATGCGGGTACGCTGCGCCATCATCCCCTCCGACATGCTGCACATC
 AGCACCAACTGCCGCACGGCTGAGAAGATGGCGCTAACGCTGCTGGACTACCTCTCCACCAGGAGGTGC
 AGGCTGTGTCCAACCTCTCGGGGAGGGCAAGCAGCGGAAGAAGCAGCTGGACCCGCTCACCATCTACGG
 CATCCGGTGTACCTTTCTATAAATTTGGCATCACAGAAATCCGACTGGTACCGAATCAAGCAGAGCATC
 GACTCCAAGTGCCGCACGGCGTGGCGGCCAAGCAGCGGGGCCAGAGCCTGGCGGTCAAGAGCTTCTCGC
 GGAGAAGCCCAACTCGTCTCTACTGCCCTTACAGCCGATGATGAGCACCCACCTCCTGCCAGCGA
 GCTCCCGCAGCCACAGCCGACGCCGAGGCCCTGCACTACGCGCTGGCCAACGCACAGCAGGTGCAGATC
 CACCAGATCGGAGAAGACGGACAGGTGCAAGTAAATCCACAGGGACACCTCCACATCGCCAGGTGCCCG
 AGGGGGGCAAGTCCAGATCACGCAGGACAGCGAGGGCAACCTCCAGATCCATCACGTGGGCGGACCGG
 TCAGGTGCTGCAGGGTGCACAGCTGATCGCCGTGGCCTCCTCGGACCCCGCGGCGGGCGTGGATGGG
 TCGCCACTCCAGGGCAGCGACATCCAGTTTCACTGAGTGCAGCTGGCGCCAGTGAAGTACACACGGCCG
 GGGCACAGACGGCCGAAGCCCTGCAGCCACGCTACAGCCGAGATGCAGCTCGAGCACGGGGCCATCCA
 GATTGAG

ACGCGTACGCGGCCGCTCGAGCAGAACTCATCTCAGAAGAGGATCTGGCAGCAAATGATATCTGGATT
 ACAAGGATGACGACGATAAGGTTTAA

Protein Sequence:

>RC203448 protein sequence
 Red=Cloning site Green=Tags(s)

MMSEHDLADVQIAVEDLSPDHPVLENHVVTDEDEPALKRQRLEINCQDPSIKSFLYSINQTI CLR LDS
 IEAKLQALEATCKSLEEKLDLVTNKQHSPIQVPMVAGSPLGATQTCNKVRCVAVPGRRQNTIVVKVPGQED
 SHHEDGESGSEASDSVSSCGQAGSQSIGSNVTLITLNSEEDYPNGTWLGDENNPEMRVCAIIPSDMLHI
 STNCRATAEKMALTLLDYLFHREVQAVSNLSGQKHGKQLDPLTIYGIRCHLFYKFGITESDWYRIKQSI
 DSKRTAWRRKQRGQSLAVKFSRRTPNSSYCPSEPMSTPPPASELPQPQPQALHYALANAQQVQI
 HQIGEDGQVQVIPQGHLLIAQVPQGEVQITQDSEGNLQIHHVQDQGVQLQGAQLIAVASSDPAAAGVDG
 SPLQGSIDIQVYVQLAPVSDHTAGAQTAEALQPTLQPEMQLEHGAIQIQ

TRTRPLEQKLISEEDLAANDILDYKDDDDKV

Chromatograms:

https://cdn.origene.com/chromatograms/mk6428_d03.zip

Restriction Sites:

Sgfl-MluI

Cloning Scheme:

Cloning sites used for ORF Shutting:



* The last codon before the Stop codon of the ORF

ACCN: NM_017869

ORF Size: 1407 bp

OTI Disclaimer: The molecular sequence of this clone aligns with the gene accession number as a point of reference only. However, individual transcript sequences of the same gene can differ through naturally occurring variations (e.g. polymorphisms), each with its own valid existence. This clone is substantially in agreement with the reference, but a complete review of all prevailing variants is recommended prior to use. [More info](#)
OTI Annotation: This clone was engineered to express the complete ORF with an expression tag. Expression varies depending on the nature of the gene.

Components: The ORF clone is ion-exchange column purified and shipped in a 2D barcoded Matrix tube containing 10ug of transfection-ready, dried plasmid DNA (reconstitute with 100 ul of water).

Reconstitution Method:

1. Centrifuge at 5,000xg for 5min.
2. Carefully open the tube and add 100ul of sterile water to dissolve the DNA.
3. Close the tube and incubate for 10 minutes at room temperature.
4. Briefly vortex the tube and then do a quick spin (less than 5000xg) to concentrate the liquid at the bottom.
5. Store the suspended plasmid at -20°C. The DNA is stable for at least one year from date of shipping when stored at -20°C.

RefSeq Size: 2230 bp

RefSeq ORF: 1410 bp

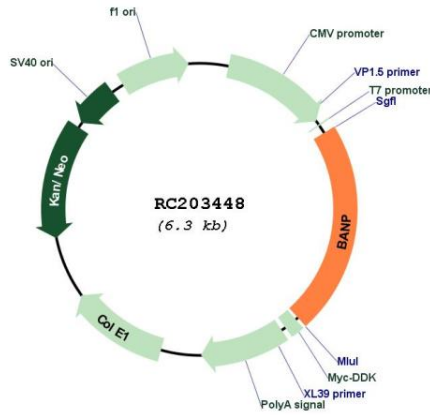
Locus ID: 54971

UniProt ID: [Q8N9N5](#)
Cytogenetics: 16q24.2

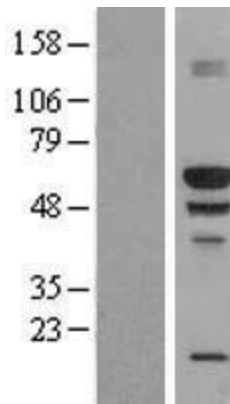
MW: 51.2 kDa

Gene Summary:

This gene encodes a protein that binds to matrix attachment regions. The protein forms a complex with p53 and negatively regulates p53 transcription, and functions as a tumor suppressor and cell cycle regulator. Multiple transcript variants encoding different isoforms have been found for this gene. [provided by RefSeq, Mar 2010]

Product images:


Circular map for RC203448



Western blot validation of overexpression lysate (Cat# [LY409206]) using anti-DDK antibody (Cat# [TA50011-100]). Left: Cell lysates from untransfected HEK293T cells; Right: Cell lysates from HEK293T cells transfected with [RC212927] using transfection reagent MegaTran 2.0 (Cat# [TT210002]).