

Product datasheet for **RC203443**

ZBTB5 (NM_014872) Human Tagged ORF Clone

Product data:

Product Type:	Expression Plasmids
Product Name:	ZBTB5 (NM_014872) Human Tagged ORF Clone
Tag:	Myc-DDK
Symbol:	ZBTB5
Mammalian Cell Selection:	Neomycin
Vector:	pCMV6-Entry (PS100001)
E. coli Selection:	Kanamycin (25 ug/mL)



[View online »](#)

ORF Nucleotide Sequence:

>RC203443 representing NM_014872
 Red=Cloning site Blue=ORF Green=Tags(s)

TTTTGTAATACGACTCACTATAGGGCGGCCGGAATTCGTCGACTGGATCCGGTACCGAGGAGATCTGCC
 GCC**GCGATCGCC**

ATGGATTTTCTGGTCACTTTGAACAAATCTTCCAGCAGCTGAACTACCAGAGACTTCATGGCCAGCTCT
 GTGATTGTGCATTGTAGTGGGGAATAGACACTTTAAAGCCACCCTCGGTGCTGGCAGCATGCAGCAC
 GCATTTCCGAGCCCTGTTCTCAGTGGCAGAAGGAGATCAGACCATGAACATGATCCAGCTGGATAGCGAG
 GTGGTGACAGCAGAGGCCCTTTGCTGCACTGATTGACATGATGTATACCTCCACCCTCATGCTGGGGAGA
 GCAATGTAATGGATGTCTATTGGCAGCCTCTCACCTGCATTTGAACTCTGTTGTTAAGGCATGTAACA
 TTACTTAAACGACAAGGACGCTGCCCATGTCTCCCCCAGTGAGCGGTTCCAGGAGCAGAGCGCCCGCATG
 CAGCGCTCCTTTATGCTACAGCAGCTGGGACTAAGCATCGTGAGCTCAGCCCTCAATTCAGCCAGAATG
 GCGAGGAGCAGCCAGCCCCATGAGCTTCCATGCGCAGTAACCTGGATCAGCGCACGCCCTTCCCAT
 GAGACGCCTTCATAAGCGCAAGCAGTCTGCAGAGGAGCGGCCAGGCAGCGCCTCCGACCCTCCATAGAT
 GAGTCTGCCATTTAGATGTTACACCGGAGAATGGGCCTTCAGGGGTTTATTCTCGGGAGGAGTTCTTTT
 CACCAGATTCTCTGAAAATTGTGGATAATCCTAAAGCTGACGGAATGACTGATAACCAGGAAGATAGTGC
 GATCATGTTTGTAGTCACTTTTGGCACTCAAGAAGATGCCAGGTGCCAGCCAGTCTGATAACAGTGTCT
 GGCAACATGGCACAGTTGTCATGGCCTCTCGTCAACTCAGGTTGAGACTAGTTTTGATCAGGAAGCTG
 CACCTGAGAAAAGTAGTTTTAGTGTGAAAACCCTGAGGTTGGCCTTGGTGAGAAGGAGCACATGAGAGT
 GGTGGTTAAATCTGAGCCCTGAGCTCACCTGAGCCTCAGGATGAAGTGAAGTGTGACCTCACAAAGCA
 GAAGGCAGCGAGTCTGTGGAAGTGAAGGAGTTGTGGTCACTGCCGAGAAGATAGACCTCAGCCCTGAAA
 GCAGTGATCGGAGTTTTTCAGATCCCCAGTCTAGCACAGACAGGGTAGGTGATATCCATATTTTGAAGT
 CACAAATAACCTAGAGCATAAAGTCCACTTTTAGTATTTTGAATTTTCTTAAACAGAGCAGAGGAAATAAC
 TTTACTGCAAAATCAGAACAATGATGATAATATTCCAAACACCACTAGTACTGCAGGCTGGAGAGTGAGG
 CCCCCTATTTGTTGAGTCCAGAGGCTGGGCCTGCAGGTGGGCCCTCCTCTGCCCTGGCTCCCATGTAGA
 GAACCCATTTAGTGAACCTGCAGACTCCCACCTTCGTGAGGCTATGCAGGAGGTGATGGGCTGCCGTGT
 GTGCAGACTTCAGGCTACCAAGGAGGAGAACAGTTTGGGATGGACTTTTCCAGGCTCGTGTGGGCTCC
 ACTCCTCCTTCTCCAGGTAATGATAGGTTCCCAAGGGGAGGAGCCAGTAACTTTCCTTACTACCGCCG
 CATAGCTCCAAAATGCCAGTTGTAACCTCCGTGAGGAGCTCACAGATCCCAGAAAACCTACCAGTTCT
 CAGCTAATGATGAATGGAGCTACGTCTCATTGAAAATGGCCATCCTTCCAGCCTGGCCCTCCACAGT
 TGACCAGGCATCTGCAGATGTTCTGTCAAAGTGAAGAAGGCCTTATCAGAGCACAATGTTTTGTTGT
 AGAGGGAGCTCGCAAGTATGCCTGCAAAAATCTGCTGCAAAAATTTTCTGACTTTGACAGATTGCAAGAAG
 CACATCCGTGTTACACAGGTGAAAAGCCTTACGCCTGCCTGAAGTGTGGCAAGAGGTTTGTAGTCCCA
 GCCACCTGTATAAGCACTCAAAGACTACCTGCCTGCGCTGGCAGAGCAGCAATCTTCCAGCACTTTGCT
 C

ACGCGTACGCGGCCGCTCGAGCAGAACTCATCTCAGAAGAGGATCTGGCAGCAATGATATCCTGGATT
 ACAAGGATGACGACGATAAGGTTTAA

Protein Sequence: >RC203443 representing NM_014872
Red=Cloning site Green=Tags(s)

MDFPGHFEQIFQQLNYQRLHGQLCDCVIVVGNRHFKAHRSVLAACSTHFRALFVSAEGDQTMNMIQLDSE
 VVTAEFAALIDMMYTSTLMLGESNVMDVLLAASHLHLNSVVKACKHYL TTRTLPMSPPSERVQEQSARM
 QRSFMLQQLGLSIVSSALNSSQNGEEQPAPMSSSMRSNLDQRTPFPMRRLHKKQSAEERARQLRPSID
 ESAISDVTPENGPSGVHSREEFFSPDSLKIVDNPKADGMDNQEDSAIMFDQSFGTQEDAQVPSQSDNSA
 GNMAQLSMASRATQVETSFQDEAAPEKSSFQCNPEVGLGEKEHMRVVVKSEPLSSPEPQDEVSDVTSQA
 EGSESVEVEGVVSAEKIDLSPESDRSFSDPQSSTDRVGDIIHILEVTNNLEHKSTFSISNFLNKSARGN
 FTANQNNDNIPNTTSDCRLESEAPYLLSPEAGPAGGSSAPGSHVENPFSEPADSHFVRPMQEVMLGPC
 VQTSQYQGGQFGMDFSRSLGLHSSF SRVMIGSPRGGASNFYYRRIAPKMPVVT SVRSQIPENSTSS
 QLMMGATSSFENGHPSQPGPPQLTRASADVL SKCKKAL SEHNVLVVEGARKYACKICCKTFLTLTDCKK
 HIRVHTGEKPYACLKCGKRFSSSHLYKHSKTTCLRWQSSNLPSTLL

TRTRPLEQKLISEEDLAANDILDYKDDDDKV

Chromatograms: https://cdn.origene.com/chromatograms/mg2917_c01.zip

Restriction Sites: SgfI-MluI

Cloning Scheme:



ACCN: NM_014872

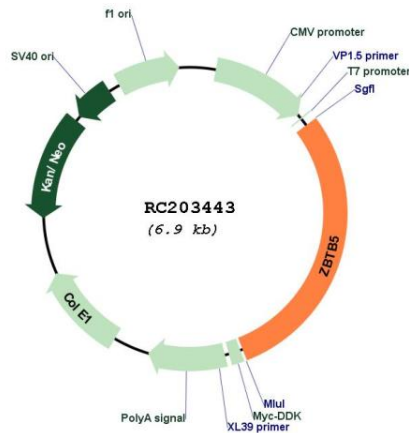
ORF Size: 2031 bp

OTI Disclaimer: The molecular sequence of this clone aligns with the gene accession number as a point of reference only. However, individual transcript sequences of the same gene can differ through naturally occurring variations (e.g. polymorphisms), each with its own valid existence. This clone is substantially in agreement with the reference, but a complete review of all prevailing variants is recommended prior to use. [More info](#)

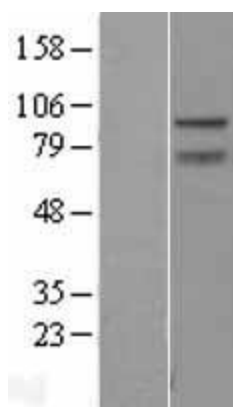
OTI Annotation: This clone was engineered to express the complete ORF with an expression tag. Expression varies depending on the nature of the gene.

Components:	The ORF clone is ion-exchange column purified and shipped in a 2D barcoded Matrix tube containing 10ug of transfection-ready, dried plasmid DNA (reconstitute with 100 ul of water).
Reconstitution Method:	<ol style="list-style-type: none"> 1. Centrifuge at 5,000xg for 5min. 2. Carefully open the tube and add 100ul of sterile water to dissolve the DNA. 3. Close the tube and incubate for 10 minutes at room temperature. 4. Briefly vortex the tube and then do a quick spin (less than 5000xg) to concentrate the liquid at the bottom. 5. Store the suspended plasmid at -20°C. The DNA is stable for at least one year from date of shipping when stored at -20°C.
RefSeq:	<u>NM_014872.3</u>
RefSeq Size:	4631 bp
RefSeq ORF:	2034 bp
Locus ID:	9925
UniProt ID:	<u>O15062</u>
Cytogenetics:	9p13.2
Domains:	BTB, zf-C2H2
Protein Families:	Transcription Factors
MW:	74.1 kDa
Gene Summary:	May be involved in transcriptional regulation.[UniProtKB/Swiss-Prot Function]

Product images:



Circular map for RC203443



Western blot validation of overexpression lysate (Cat# [LY414902]) using anti-DDK antibody (Cat# [TA50011-100]). Left: Cell lysates from untransfected HEK293T cells; Right: Cell lysates from HEK293T cells transfected with RC203443 using transfection reagent MegaTran 2.0 (Cat# [TT210002]).