

## Product datasheet for **RC203440**

### **C2orf28 (ATRAID) (NM\_016085) Human Tagged ORF Clone**

#### Product data:

Product Type:	Expression Plasmids
Product Name:	C2orf28 (ATRAID) (NM_016085) Human Tagged ORF Clone
Tag:	Myc-DDK
Symbol:	C2orf28
Synonyms:	APR--3; APR-3; APR3; C2orf28; HSPC013; p18; PRO240
Mammalian Cell Selection:	Neomycin
Vector:	pCMV6-Entry (PS100001)
E. coli Selection:	Kanamycin (25 ug/mL)
ORF Nucleotide Sequence:	>RC203440 ORF sequence Red=Cloning site Blue=ORF Green=Tags(s)

TTTTGTAATACGACTCACTATAGGGCGCCGGGAATTCGTCGACTGGATCCGGTACCGAGGAGATCTGCC  
GCC**CGATCGCC**

ATGCTGCATGCCGTTGCTGCCTGAATCAGAAGGGCACCATCTTGGGGCTGGATCTCCAGAACTGTTCTC  
TGGAGGACCCTGGTCCAACTTTTCATCAGGCACATACCACTGTCATCATAGACCTGCAAGCAAACCCCT  
CAAAGGTGACTTGGCCAACACCTTCCGTGGCTTTACTCAGCTCCAGACTCTGATACTGCCACAACATGTC  
AACTGCTCCTGGAGGAATTAATGCCTGGAATACTATCACCTTTATATAGACAACCAAATCTGTCAAGGGC  
AAAAGAACCTTTGCAATAACACTGGGGACCCAGAAATGTGTCCTGAGAATGGATCTTGTGTACCTGATGG  
TCCAGGTCTTTGCAGTGTGTTTGTGCTGATGGTTCCATGGATACAAGTGTATGCGCCAGGGCTCGTTC  
TCACTGCTTATGTTCTTCGGGATTCTGGGAGCCACCACCTATCCGTCTCCATTCTGCTTTGGGGACCC  
AGCGCCGAAAAGCCAAGACTTCA

**ACGCGT**ACGCGGCCGCTCGAGCAGAACTCATCTCAGAAGAGGATCTGGCAGCAAATGATATCCTGGATT  
ACAAGGATGACGACGATAAGGTTTAA

Protein Sequence:	>RC203440 protein sequence Red=Cloning site Green=Tags(s)
-------------------	--

MLHARCCLNQKGTILGLDLQNCLEDPGPNFHQAHTTVIIDLQANPLKGDLANFRGFTQLQTLILPQHV  
NCPGGINAWNTITSYIDNQICQGQKNLCNNTGDPEMCPENGSCVPDGPGLLQCVCADGFHGYKCMRQGSF  
SLLMFFGILGATTLVSVSILLWATQRRKAKTS

**TR**TRPLEQKLISEEDLAANDILDYKDDDDKV

Chromatograms:	<a href="https://cdn.origene.com/chromatograms/mk6557_g06.zip">https://cdn.origene.com/chromatograms/mk6557_g06.zip</a>
----------------	---



[View online »](#)

**Restriction Sites:** SgfI-MluI

**Cloning Scheme:**



**ACCN:** NM\_016085

**ORF Size:** 513 bp

**OTI Disclaimer:** The molecular sequence of this clone aligns with the gene accession number as a point of reference only. However, individual transcript sequences of the same gene can differ through naturally occurring variations (e.g. polymorphisms), each with its own valid existence. This clone is substantially in agreement with the reference, but a complete review of all prevailing variants is recommended prior to use. [More info](#)

**OTI Annotation:** This clone was engineered to express the complete ORF with an expression tag. Expression varies depending on the nature of the gene.

**Components:** The ORF clone is ion-exchange column purified and shipped in a 2D barcoded Matrix tube containing 10ug of transfection-ready, dried plasmid DNA (reconstitute with 100 ul of water).

**Reconstitution Method:**

1. Centrifuge at 5,000xg for 5min.
2. Carefully open the tube and add 100ul of sterile water to dissolve the DNA.
3. Close the tube and incubate for 10 minutes at room temperature.
4. Briefly vortex the tube and then do a quick spin (less than 5000xg) to concentrate the liquid at the bottom.
5. Store the suspended plasmid at -20°C. The DNA is stable for at least one year from date of shipping when stored at -20°C.

**RefSeq:** [NM\\_016085.5](#)

**RefSeq Size:** 1098 bp

**RefSeq ORF:** 516 bp

**Locus ID:** 51374

**UniProt ID:** [Q6UW56](#)

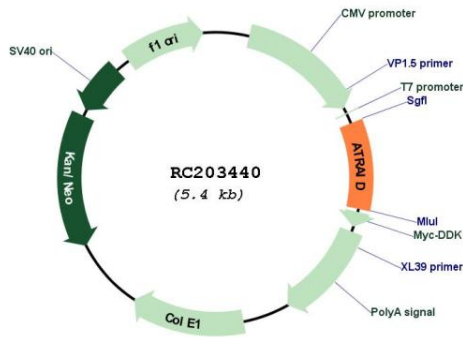
**Cytogenetics:** 2p23.3

**Protein Families:** Druggable Genome, Transmembrane

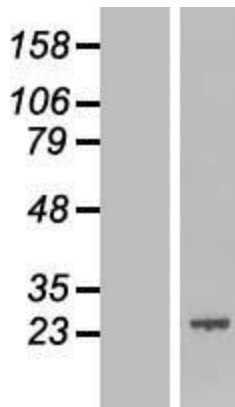
**MW:** 18.6 kDa

**Gene Summary:** This gene is thought to be involved in apoptosis, and may also be involved in hematopoietic development and differentiation. The use of alternative splice sites and promoters result in multiple transcript variants encoding different isoforms.[provided by RefSeq, Dec 2009]

**Product images:**



Circular map for RC203440



Western blot validation of overexpression lysate (Cat# [LY414191]) using anti-DDK antibody (Cat# [TA50011-100]). Left: Cell lysates from untransfected HEK293T cells; Right: Cell lysates from HEK293T cells transfected with RC203440 using transfection reagent MegaTran 2.0 (Cat# [TT210002]).