

## Product datasheet for **RC203437**

### RBMS1 (NM\_016836) Human Tagged ORF Clone

#### Product data:

**Product Type:** Expression Plasmids  
**Product Name:** RBMS1 (NM\_016836) Human Tagged ORF Clone  
**Tag:** Myc-DDK  
**Symbol:** RBMS1  
**Synonyms:** C2orf12; HCC-4; MSSP; MSSP-1; MSSP-2; MSSP-3; SCR2; YC1  
**Mammalian Cell Selection:** Neomycin  
**Vector:** pCMV6-Entry (PS100001)  
**E. coli Selection:** Kanamycin (25 ug/mL)  
**ORF Nucleotide Sequence:** >RC203437 ORF sequence  
 Red=Cloning site Blue=ORF Green=Tags(s)

TTTTGTAATACGACTCACTATAGGGCGCCGGGAATTCGTCGACTGGATCCGGTACCGAGGAGATCTGCC  
 GCC**CGATCGCC**

ATGGGCAAAGTGTGAAACAGCAGATGTACCCTCAGTACGCCACCTACTATTACCCCAAGTATCTGCAAG  
 CCAAGCAGTCTCTGGTCCCAGCCACCCCATGGCCCTCCAGTCCCAGCACCACCAGCAGTAATAACAA  
 CAGTAGCAGCAGTAGCAACTCAGGATGGGATCAGCTCAGCAAACGAACCTCTATATCCGAGGACTGCCT  
 CCCACACCACCAGCAGGACCTGGTGAAGCTCTGTCAACCATATGGGAAAATAGTCTCCACAAAGGCAA  
 TTTTGGATAAGACAACGAACAAATGCAAAGTTATGGTTTTGTCGACTTTGACAGCCCTGCAGCAGCTCA  
 AAAAGCTGTGTGCCCTGAAGGCCAGTGGGGTTCAAGCTCAAATGGCAAAGCAACAGGAACAAGATCCT  
 ACCAACCTCTACATTTCTAATTTGCCACTCTCCATGGATGAGCAAGAACTAGAAAATATGCTCAAACCAT  
 TTGGACAAGTTATTTCTACAAGGATACTACGTGATTCCAGTGGTACAAGTCGTGGTGTGGCTTTGCTAG  
 GATGGAATCAACAGAAAAATGTGAAGCTGTTATTGGTCATTTTAAATGGAAAAATTAAGACACCACCA  
 GGAGTTTCTGCCCCACAGAACCTTTATTGTGTAAGTTTGTCTGATGGAGGACAGAAAAAGAGACAGAACC  
 CAAACAAATACATCCCTAATGGAAGACCATGGCATAGAGAAGGAGAGGTGAGACTTGCTGGAATGACACT  
 TACTTACGACCCAACACAGCTGCTATACAGAACGGATTTTATCCTTACCATACAGTATTGCTACAAAC  
 CGAATGATCACTCAAACCTCTATTACACCCTATATTGCATCTCCTGTATCTGCCTACCAGGTGCAAAGT  
 CTTGCTGGATGCAACCTCAACCATATATTCTACAGCACCCCTGGTCCCGTGTAACTCCCTCAATGGAGCA  
 CACCATGTCACTACAGCCCGCATCAATGATCAGCCCTCTGGCCAGCAGATGAGTCATCTGTCACTAGGC  
 AGCACCAGCAACATACATGCCTGCAACGTGAGCTATGCAAGGAGCCTACTTGCCACAGTATGCACATATGC  
 AGACGACAGCGTTCTGTTGAGGAGGCAAGTGGTCAACAGCAGGTGGCTGTCGAGACGTCTAATGACCA  
 TTCTCCATATACCTTTCAACCTAATAAG

**ACGCGT**ACGCGGCCGCTCGAGCAGAAACTCATCTCAGAAGAGGATCTGGCAGCAAATGATATCCTGGATT  
 ACAAGGATGACGACGATAAGGTTTAA



[View online >](#)

**Protein Sequence:** >RC203437 protein sequence  
 Red=Cloning site Green=Tags(s)

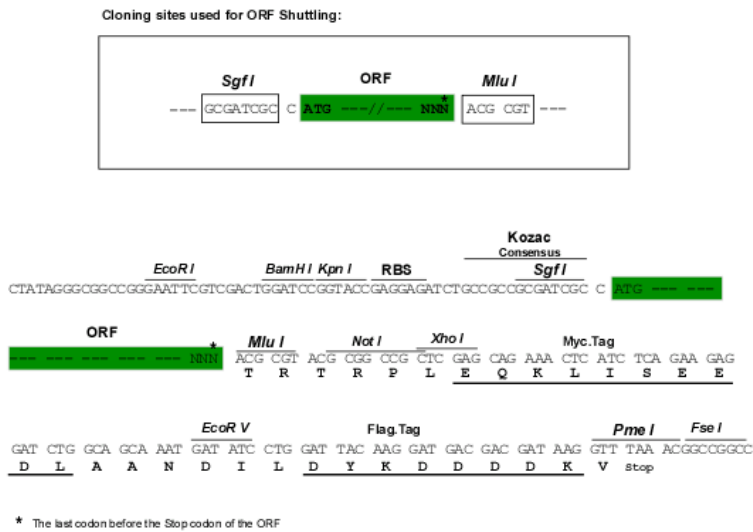
MGKVWVKQMPQYATYYYYPQYLQAKQSLVPAHPMAPPSPSTTSSNNSSSSSSNSGWDQLSKTNLYIRGLP  
 PHTTDQDLVKLCQPYGKIIVSTKAILDKTTNKCKGYGFVDFDSPAQAQKAVSALKASGVQAQMAQQEQDP  
 TNLYISNLPLSMDEQELENMLKPFQVISTRILRDSSGTSRGGVFARMESTEKC EAVIGHFNGKF IKTPP  
 GVSAPTEPLLCKFADGGQKKRQNPVKYIPNGRPWHREGEVRLAGMTLTYDPTTAAIQNGFYPSYSIATN  
 RMITQTSITPYIASPVSA YQVQSPSWMQOPYILQHPGAVLTPSMEHTMSLQPASMI SPLAQQMSHL SLG  
 STGTYPATSAMQGAYLPQYAHMQTTAVPVVEEASGQQQVAVETSNDHSPYTFQPNK

TRTRPLEQKLISEEDLAANDILDYKDDDDKV

**Chromatograms:** [https://cdn.origene.com/chromatograms/mk6423\\_a09.zip](https://cdn.origene.com/chromatograms/mk6423_a09.zip)

**Restriction Sites:** SgfI-MluI

**Cloning Scheme:**



**ACCN:** NM\_016836

**ORF Size:** 1218 bp

**OTI Disclaimer:** The molecular sequence of this clone aligns with the gene accession number as a point of reference only. However, individual transcript sequences of the same gene can differ through naturally occurring variations (e.g. polymorphisms), each with its own valid existence. This clone is substantially in agreement with the reference, but a complete review of all prevailing variants is recommended prior to use. [More info](#)

**OTI Annotation:** This clone was engineered to express the complete ORF with an expression tag. Expression varies depending on the nature of the gene.

**Components:** The ORF clone is ion-exchange column purified and shipped in a 2D barcoded Matrix tube containing 10ug of transfection-ready, dried plasmid DNA (reconstitute with 100 ul of water).

**Reconstitution Method:**

1. Centrifuge at 5,000xg for 5min.
2. Carefully open the tube and add 100ul of sterile water to dissolve the DNA.
3. Close the tube and incubate for 10 minutes at room temperature.
4. Briefly vortex the tube and then do a quick spin (less than 5000xg) to concentrate the liquid at the bottom.
5. Store the suspended plasmid at -20°C. The DNA is stable for at least one year from date of shipping when stored at -20°C.

**RefSeq:** [NM\\_016836.4](#)

**RefSeq Size:** 4305 bp

**RefSeq ORF:** 1221 bp

**Locus ID:** 5937

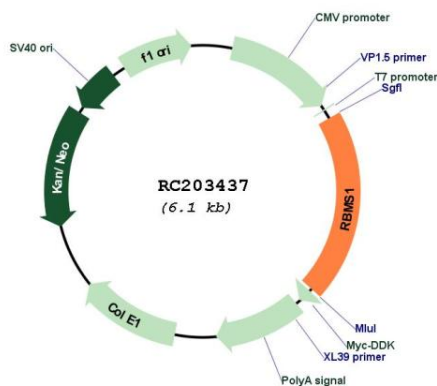
**UniProt ID:** [P29558](#)

**Cytogenetics:** 2q24.2

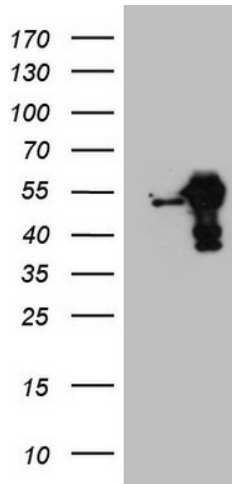
**MW:** 44.5 kDa

**Gene Summary:** This gene encodes a member of a small family of proteins which bind single stranded DNA/RNA. These proteins are characterized by the presence of two sets of ribonucleoprotein consensus sequence (RNP-CS) that contain conserved motifs, RNP1 and RNP2, originally described in RNA binding proteins, and required for DNA binding. These proteins have been implicated in such diverse functions as DNA replication, gene transcription, cell cycle progression and apoptosis. Several transcript variants, resulting from alternative splicing and encoding different isoforms, have been described. A pseudogene for this locus is found on chromosome 12. [provided by RefSeq, Feb 2009]

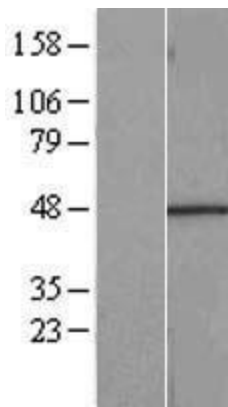
**Product images:**



Circular map for RC203437



HEK293T cells were transfected with the pCMV6-ENTRY control (Cat# [PS100001], Left lane) or pCMV6-ENTRY RBMS1 (Cat# RC203437, Right lane) cDNA for 48 hrs and lysed. Equivalent amounts of cell lysates (5 ug per lane) were separated by SDS-PAGE and immunoblotted with anti-RBMS1 (Cat# [TA808580])(1:2000). Positive lysates [LY413821] (100ug) and [LC413821] (20ug) can be purchased separately from OriGene.



Western blot validation of overexpression lysate (Cat# [LY413821]) using anti-DDK antibody (Cat# [TA50011-100]). Left: Cell lysates from untransfected HEK293T cells; Right: Cell lysates from HEK293T cells transfected with RC203437 using transfection reagent MegaTran 2.0 (Cat# [TT210002]).