

Product datasheet for **RC203436**

ZNF16 (NM_006958) Human Tagged ORF Clone

Product data:

Product Type:	Expression Plasmids
Product Name:	ZNF16 (NM_006958) Human Tagged ORF Clone
Tag:	Myc-DDK
Symbol:	ZNF16
Synonyms:	HZF1; KOX9
Mammalian Cell Selection:	Neomycin
Vector:	pCMV6-Entry (PS100001)
E. coli Selection:	Kanamycin (25 ug/mL)



[View online »](#)

ORF Nucleotide
Sequence:

>RC203436 ORF sequence
Red=Cloning site Blue=ORF Green=Tags(s)

TTTTGTAATACGACTCACTATAGGGCGGCCGGGAATTCGTGCGACTGGATCCGGTACCGAGGAGATCTGCC
GCCGCGATCGCC

ATGCCAGCCTCAGAACTCGCCGTGAGGAGGCAGAGATGGAGCTCTCAGTTCCAGGACCATCCCCCTGGA
CCCTGCAGCCCAGGCCGTGTGAGAGATGCTCCTGCTGTGACCCACCCTGGATCTGCAGCCTGTGGTAC
CCCCTGCTGTAGTGATACTGAGCTGGAAGCCATCTGCCCTCACTATCAGCAGCCAGATTGTGACACCAGG
ACTGAAGACAAGGAGTTTCTTACAAGGAAGACATTCATGAAGATTTGGAATCACAGGCAGAAAATACAG
AAAATATGCTGGTGATGTTCCAGGTACCCGAGCTTGAGATCTGTGTGATGATGATCAGAAAAGAGA
CTGGGGAGTCCCCGAAGGCAGGAGGCTGCCACAGTCCCTCTCCAGGAGGGGGACTTCACACCAGCTGCC
ATGGGGCTCCTTAGGGGCCCTTAGGGGAGAAAGATCTGGACTGTAATGGTTTTGACAGTCGCTTCAGTC
TGAGCCCCAAACCTGATGGCATGTCAGGAAATCCCTACAGAAGAGAGGCCACATCCATATGACATGGGTGG
CCAGAGTTTCCAGCACAGTGTGGACCTAACTGGTCATGAGGGGGTTCCCACAGCTGAAAGTCCACTATA
TGTAATGAGTGTGGGAAAACCTTCCAAGGAAATCCTGACCTTATTCAGCGTCAAATAGTCCACACTGGGG
AGGCTTCCTTTATGTGTGATGATTGTGGGAAAACCTTCAGCCAGAACTCAGTTCTTAAAAACCGTACCG
ATCTCATATGAGTGAGAAAGCTTACCAGTGCAGCGAATGTGGGAAAGCCTTCCGAGGGCACTCAGACTTT
TCTAGGCATCAGAGTCACCACAGCAGTGAGAGGCCCTTATATGTGTAATGAATGTGGAAAAGCCTTCAGCC
AGAAGCTCGAGCCTTAAAAAGCACCAAAAGTCTCACATGAGTGAGAAGCCCTATGAATGCAATGAATGTGG
GAAGGCTTTTAGGCGGAGCTCAAACCTCATCCAACATCAAAGAATCCATTCTGGGGAGAAAACCGTATGTG
TGCAGTGAGTGTGGGAAGGCCTTCAGCCGAAGCTCAAACCTCATCAAACACCACAGGACTCACACAGGAG
AGAAGCCTTTTGTAGTGTGGCGAGTGTGGGAAAGCCTTCAGCCAGAGTGCACACCTGAGGAAGCACCAGAG
GGTCCACACTGGAGAGAAGCCTTATGAGTGAATGATTGTGGCAAGCCCTTCAGTCGGGTCTCAAACCTC
ATTAAGCACACAGGGTTCACACTGGAGAGAAGCCCTATAAGTGCAGTACTGTGGGAAAGCATTATGTC
AGAGCTCCAGCCTTATTCAGCATCGGAGAATTCACACTGGAGAAAAGCCTCACGTGTGTAATGTATGTGG
AAAAGCCTTATGTTATAGCTCAGTGTCTCCGAAAGCACCAGATCATCCACACGGGAGAGAAGCCGTACAGA
TGCAGTGTCTGTGGGAAGGCCTTCAGCCACAGCTCAGCCCTCATTGAGCACCAGGGCGTGCACACAGGCG
ACAAGCCCTACGCCTGCCACGAGTGTGGGAAGACCTTTGGTGCAGCTCCAACCTCATCCTTACCAGCG
AGTCCACACTGGAGAGAAGCCCTATGAATGTACTGAATGTGGAAAACCTTCAGCCAGAGCTCAACCCTC
ATTCAGCATCAGAGGATTCATAATGGGCTGAAGCCCCATGAATGTAACCAGTGTGGTAAAGCCTTCAACC
GAAGCTCAAATCTCATTACCACCAGAAAAGTTCATACTGGGGAAAACCTACACCTGTGTTGAATGTGG
TAAGGGCTTCAGCCAGAGCTCACACCTCATTGAGCATCAGATAATCCACACGGGGCAGCGCCCTACAAA
TGCAGTGAGTGTGGGAAAGCCTTCAGTCAGCGTTCGGTCTCATCCAGCACCAGAGGATTCACACTGGGG
TGAAGCCCTATGACTGTGCTGCTGTGGGAAAGCCTTCAGCCAGCGATCAAAGTTGATCAAACACCAGTT
GATTCACACCAGGGAA

ACGCGTACGCGGCCGCTCGAGCAGAACTCATCTCAGAAGAGGATCTGGCAGCAAATGATATCCTGGATT
ACAAGGATGACGACGATAAGGTTTAA

Protein Sequence: >RC203436 protein sequence
Red=Cloning site Green=Tags(s)

MPSLRTRREEAEMELSVPGPSPWTPAAQARVRDAPVTHPGSAACGTPCCSDTELEAICPHYQQPDCDTR
 TEDKEFLHKEDIHEDLESQAEISENYAGDVSQVPELGDLCDDVSRDWGVPEGRRLPQSLSQEGDFTPAA
 MGLLRGPLGEKDLDCNGFDSRFLSPNLMACQEIPTTEERPHYPDMGGQSFQHSVDLTGHEGVPTAESPLI
 CNECGKTFQGNPDLIQRQIVHTGEASFMCDDCGKTF SQNSVLKNRHRSHMSEKAYQCSECGKAFRGHSDF
 SRHQSHSSSERPYMCNECGKAFSQNSSLKKHKSHMSEKPYECNECGKAFRRSSNLIQHRIHSGEKPYV
 CSECGKAFRRSSNLIKHHRHTHTGEKPFECGECGKAFSQAHLRKHQRVHTGEKPYECNDCGKPF SRVSNL
 IKHHRVHTGEKPYKCSDCGKAFSQSSSLIQHRRHTHTGEKPHVCNVCGKAFSYSSVLRKHQIHTGEKPYR
 CSVCGKAFSHSSALIQHQGVHTGDKPYACHECGKTFGRSSNLILHQRVHTGEKPYECTECGKTFQSSTL
 IQHQRIHNLKPHECNQCGKAFNRSSNL IHHQKVHTGEKPYTCVECGKGFSSSHLIQHRIHTGERPYK
 CSECGKAFSQRVLIQHQRHTGVKPYDCAACGKAFSQRSKLIKHLHTRE

TRTRPLEQKLISEEDLANDILDYKDDDDKV

Chromatograms: https://cdn.origene.com/chromatograms/mk6156_g01.zip

Restriction Sites: SgfI-MluI

Cloning Scheme:



ACCN: NM_006958

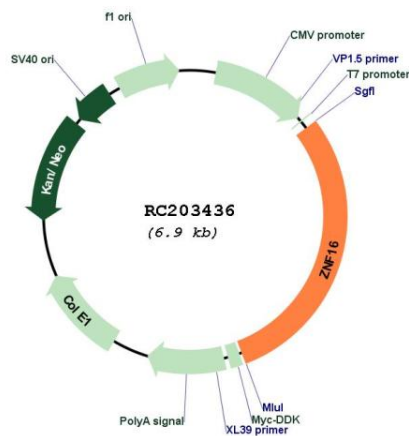
ORF Size: 2046 bp

OTI Disclaimer: The molecular sequence of this clone aligns with the gene accession number as a point of reference only. However, individual transcript sequences of the same gene can differ through naturally occurring variations (e.g. polymorphisms), each with its own valid existence. This clone is substantially in agreement with the reference, but a complete review of all prevailing variants is recommended prior to use. [More info](#)

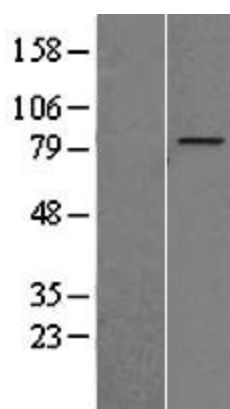
OTI Annotation: This clone was engineered to express the complete ORF with an expression tag. Expression varies depending on the nature of the gene.

Components:	The ORF clone is ion-exchange column purified and shipped in a 2D barcoded Matrix tube containing 10ug of transfection-ready, dried plasmid DNA (reconstitute with 100 ul of water).
Reconstitution Method:	<ol style="list-style-type: none"> 1. Centrifuge at 5,000xg for 5min. 2. Carefully open the tube and add 100ul of sterile water to dissolve the DNA. 3. Close the tube and incubate for 10 minutes at room temperature. 4. Briefly vortex the tube and then do a quick spin (less than 5000xg) to concentrate the liquid at the bottom. 5. Store the suspended plasmid at -20°C. The DNA is stable for at least one year from date of shipping when stored at -20°C.
RefSeq:	<u>NM_006958.3</u>
RefSeq Size:	2546 bp
RefSeq ORF:	2049 bp
Locus ID:	7564
UniProt ID:	<u>P17020</u>
Cytogenetics:	8q24.3
Domains:	zf-C2H2
Protein Families:	Transcription Factors
MW:	76.5 kDa
Gene Summary:	The protein encoded by this gene contains multiple tandem zinc finger motifs. The encoded protein is involved in the differentiation of erythroid and megakaryocytic cells. This gene is located in a cluster of related genes on chromosome 8 encoding zinc finger proteins. Alternative splicing results in multiple transcript variants. [provided by RefSeq, Sep 2012]

Product images:



Circular map for RC203436



Western blot validation of overexpression lysate (Cat# [LY422273]) using anti-DDK antibody (Cat# [TA50011-100]). Left: Cell lysates from untransfected HEK293T cells; Right: Cell lysates from HEK293T cells transfected with [RC221669] using transfection reagent MegaTran 2.0 (Cat# [TT210002]).