

Product datasheet for **RC203431**

PVRL4 (NECTIN4) (NM_030916) Human Tagged ORF Clone

Product data:

Product Type:	Expression Plasmids
Product Name:	PVRL4 (NECTIN4) (NM_030916) Human Tagged ORF Clone
Tag:	Myc-DDK
Symbol:	PVRL4
Synonyms:	EDSS1; LNIR; nectin-4; PRR4; PVRL4
Mammalian Cell Selection:	Neomycin
Vector:	pCMV6-Entry (PS100001)
E. coli Selection:	Kanamycin (25 ug/mL)



[View online »](#)

ORF Nucleotide Sequence:

>RC203431 ORF sequence
 Red=Cloning site Blue=ORF Green=Tags(s)

TTTTGTAATACGACTCACTATAGGGCGGCCGGAATTCGTCGACTGGATCCGGTACCGAGGAGATCTGCC
 GCC**CGCATCGCC**

ATGCCCTGTCCCTGGGAGCCGAGATGTGGGGCCTGAGGCCTGGCTGCTGCTGCTACTGCTGGCAT
 CATTTACAGGCCGGTGCCCGCGGGTGAGCTGGAGACCTCAGACGTGGTAACTGTGGTGCTGGGCCAGGA
 CGAAAACTGCCCTGCTTCTACCGAGGGGACTCCGGCGAGCAAGTGGGGCAAGTGGCATGGGCTCGGGTG
 GACGCGGGCGAAGGCGCCAGGAAGTACGCTACTGCACTCCTCAAAATACGGGCTTCATGTAGAGCCGGCTT
 ACGAGGGCCGGTGGAGCAGCCGCCCCACGCAACCCCTGGACGGCTCAGTCTCTGCGCAACGC
 AGTGCAGGCGGATGAGGGCGAGTACGAGTCCGGGTGAGCACCTCCCGCCGGCAGCTTCCAGGCGCGG
 CTGCGGCTCCGAGTGTGGTGCCTCCCTGCCCTCACTGAATCCTGGTCCAGCACTAGAAGAGGGCCAGG
 GCCTGACCCTGGCAGCTCCTGCACAGTGGGGCAGCCAGCCCGAGCTGACCTGGGACACGGAGGT
 CAAAGGCACAACGTCCAGCCGTTCTTCAAGCACTCCCGCTCTGCTGCCGTACCTCAGAGTTCCACTTG
 GTGCTAGCCGACAGCATGAATGGGAGCCACTGACTTGTGTGGTGTCCATCCTGGCCTGCTCCAGGACC
 AAAGGATCACCCACATCCTCCACGTGCTCTTCTTGTGAGGCCTCTGTGAGGGGCTTGAAGACAAAA
 TCTGTGGCACATTGGCAGAGAAGGAGCTATGCTCAAGTGCCTGAGTGAAGGGCAGCCCCCTCCCTCATA
 AACTGGACACGGCTGGATGGGCTCTGCCAGTGGGGTACGAGTGGATGGGGACACTTTGGGCTTTCCCC
 CACTGACCACTGAGCACAGCGGCATCTACGTCTGCCATGTCAGCAATGAGTTCTCCTCAAGGATTCTCA
 GGTCAGTGTGGATGTTCTTGACCCAGGAAGACTCTGGGAAGCAGGTGGACCTAGTGTGAGCCTCGGTG
 GTGGTGGTGGGTGATCGCCGACTCTGTTCTGCCTTCTGGTGGTGGTGGTGGTGTCTATGTCGGCAT
 ACCATCGGCGCAAGGCCACAGATGACCCAGAAATATGAGGAGGAGTACCCTGACAGGAGAACTC
 CATCCGGAGGCTGATTCCCATCACACGACCCAGGAGCCAGCCGAGGAGAGTGTAGGGCTGAGAGCC
 GAGGGCCACCCTGATAGTCTCAAGGACAACAGTGTCTGCTGTGATGAGTGAAGAGCCGAGGGCCGCA
 GTTACTCCACGCTGACCACGGTGGGGAGATAGAAACACAGACTGAACTGCTGTCTCCAGGCTCTGGGCG
 GGCCGAGGAGGAGGAAGATCAGGATGAAGGCATCAAACAGGCCATGAACATTTTGTTCAGGAGAATGGG
 ACCCTACGGGCCAAGCCACGGCAATGGCATCTACATCAATGGGCGGGGACACCTGGTC

ACGCGTACGCGGCCGCTCGAGCAGAACTCATCTCAGAAGAGGATCTGGCAGCAAATGATATCCTGGATT
 ACAAGGATGACGACGATAAGGTTTAA

Protein Sequence:

>RC203431 protein sequence
 Red=Cloning site Green=Tags(s)

MPLSLGAEMWGPEAWLLLLLLLLASFTGRCPAGELETSDVVTVVVLGQDAKLPCFYRGSQVQVAVARV
 DAGEGAQELALLHSKYGLHVSPAYEGRVEQPPPPRNPLDGSVLLRNAVQADEGEYECRVSTFPAGSFQAR
 LRLRVLVPPPLSLNPGPALEEGQLTLAASCTAEGSPAPSVTWDEVKGTTSSRSFKHSRSAAVTSEFHL
 VPSRSMNGQPLTCVVSHPGLLQDQRITHILHVSFLAEASVRGLEDQNLWHIGREGAMKCLSEGQPPPSY
 NWTRLDGPLPSGVRVDGDTLGFPLTTEHSGIYVCHVSNEFSSRDSQVTVVDLDPQEDSGKQVDLVSASV
 VVVGVIAALLFCLLVVVVLMRYHRRKAQMTQKYEELTLTRENSIRRLHSHHTDPRSQPEESVGLRA
 EGHPSLKDSSCSVMSEEPGRSYSTLTTVREIETQTELLSPGSGRAEEEEEDQDEGIKQAMNHVQENG
 TLRAKPTNGIYINGRHLV

TRTRPLEQKLISEEDLAANDILDYKDDDDKV

Chromatograms:

https://cdn.origene.com/chromatograms/mk6155_b06.zip

Restriction Sites:

SgfI-MluI

Cloning Scheme:


ACCN: NM_030916

ORF Size: 1530 bp

OTI Disclaimer: The molecular sequence of this clone aligns with the gene accession number as a point of reference only. However, individual transcript sequences of the same gene can differ through naturally occurring variations (e.g. polymorphisms), each with its own valid existence. This clone is substantially in agreement with the reference, but a complete review of all prevailing variants is recommended prior to use. [More info](#)

OTI Annotation: This clone was engineered to express the complete ORF with an expression tag. Expression varies depending on the nature of the gene.

Components: The ORF clone is ion-exchange column purified and shipped in a 2D barcoded Matrix tube containing 10ug of transfection-ready, dried plasmid DNA (reconstitute with 100 ul of water).

Reconstitution Method:

1. Centrifuge at 5,000xg for 5min.
2. Carefully open the tube and add 100ul of sterile water to dissolve the DNA.
3. Close the tube and incubate for 10 minutes at room temperature.
4. Briefly vortex the tube and then do a quick spin (less than 5000xg) to concentrate the liquid at the bottom.
5. Store the suspended plasmid at -20°C. The DNA is stable for at least one year from date of shipping when stored at -20°C.

RefSeq: [NM_030916.3](#)

RefSeq Size: 3520 bp

RefSeq ORF: 1533 bp

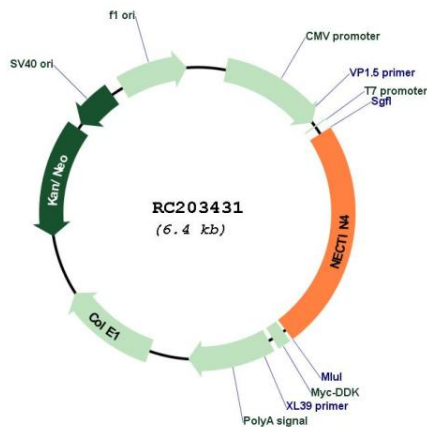
Locus ID: 81607

UniProt ID: [Q96NY8](#)

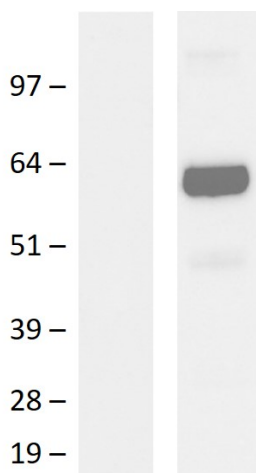
Cytogenetics: 1q23.3

Domains:	ig, IGc2, IG
Protein Families:	Druggable Genome, Transmembrane
Protein Pathways:	Adherens junction
MW:	55.5 kDa
Gene Summary:	This gene encodes a member of the nectin family. The encoded protein contains two immunoglobulin-like (Ig-like) C2-type domains and one Ig-like V-type domain. It is involved in cell adhesion through trans-homophilic and -heterophilic interactions. It is a single-pass type I membrane protein. The soluble form is produced by proteolytic cleavage at the cell surface by the metalloproteinase ADAM17/TACE. The secreted form is found in both breast tumor cell lines and breast tumor patients. Mutations in this gene are the cause of ectodermal dysplasia-syndactyly syndrome type 1, an autosomal recessive disorder. Alternatively spliced transcript variants have been found but the full-length nature of the variant has not been determined. [provided by RefSeq, Jan 2011]

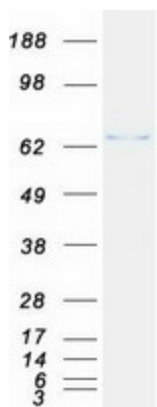
Product images:



Circular map for RC203431



Western blot validation of overexpression lysate (Cat# [LY403093]) using anti-DDK antibody (Cat# [TA592569]). Left: Cell lysates from untransfected HEK293T cells; Right: Cell lysates from HEK293T cells transfected with RC203431 using transfection reagent PEI.



Coomassie blue staining of purified NECTIN4 protein (Cat# [TP303431]). The protein was produced from HEK293T cells transfected with NECTIN4 cDNA clone (Cat# RC203431) using MegaTran 2.0 (Cat# [TT210002]).