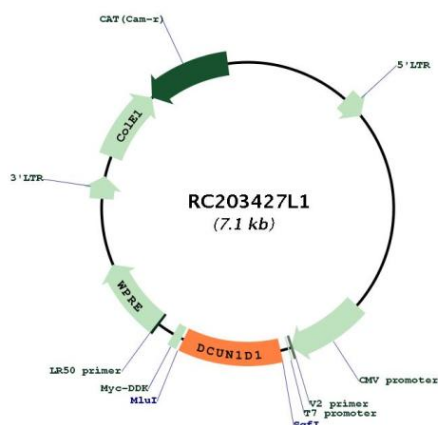
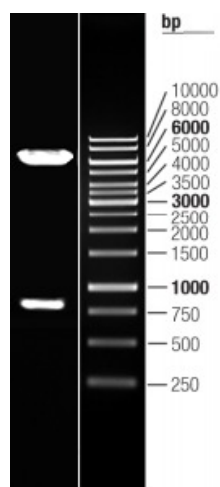


OTI Disclaimer:	The molecular sequence of this clone aligns with the gene accession number as a point of reference only. However, individual transcript sequences of the same gene can differ through naturally occurring variations (e.g. polymorphisms), each with its own valid existence. This clone is substantially in agreement with the reference, but a complete review of all prevailing variants is recommended prior to use. More info
OTI Annotation:	This clone was engineered to express the complete ORF with an expression tag. Expression varies depending on the nature of the gene.
Components:	The ORF clone is ion-exchange column purified and shipped in a 2D barcoded Matrix tube containing 10ug of transfection-ready, dried plasmid DNA (reconstitute with 100 ul of water).
Reconstitution Method:	<ol style="list-style-type: none"> 1. Centrifuge at 5,000xg for 5min. 2. Carefully open the tube and add 100ul of sterile water to dissolve the DNA. 3. Close the tube and incubate for 10 minutes at room temperature. 4. Briefly vortex the tube and then do a quick spin (less than 5000xg) to concentrate the liquid at the bottom. 5. Store the suspended plasmid at -20°C. The DNA is stable for at least one year from date of shipping when stored at -20°C.
RefSeq:	NM_020640.2
RefSeq Size:	3192 bp
RefSeq ORF:	780 bp
Locus ID:	54165
UniProt ID:	Q96GG9
Cytogenetics:	3q26.33
Domains:	DUF298
Protein Families:	Druggable Genome
MW:	30.1 kDa
Gene Summary:	Part of an E3 ubiquitin ligase complex for neddylation. Promotes neddylation of cullin components of E3 cullin-RING ubiquitin ligase complexes. Acts by binding to cullin-RBX1 complexes in the cytoplasm and promoting their nuclear translocation, enhancing recruitment of E2-NEDD8 (UBE2M-NEDD8) thioester to the complex, and optimizing the orientation of proteins in the complex to allow efficient transfer of NEDD8 from the E2 to the cullin substrates. Involved in the release of inhibitory effects of CAND1 on cullin-RING ligase E3 complex assembly and activity (PubMed:25349211, PubMed:28581483). Acts also as an oncogene facilitating malignant transformation and carcinogenic progression (By similarity). [UniProtKB/Swiss-Prot Function]

Product images:



Circular map for RC203427L1



Double digestion of RC203427L1 using SgfI and MluI