

## Product datasheet for RC203421

### DUSP22 (NM\_020185) Human Tagged ORF Clone

#### Product data:

Product Type:	Expression Plasmids
Product Name:	DUSP22 (NM_020185) Human Tagged ORF Clone
Tag:	Myc-DDK
Symbol:	DUSP22
Synonyms:	JKAP; JSP-1; JSP1; LMW-DSP2; LMWDSP2; MKP-x; MKPX; VHX
Mammalian Cell Selection:	Neomycin
Vector:	pCMV6-Entry (PS100001)
E. coli Selection:	Kanamycin (25 ug/mL)
ORF Nucleotide Sequence:	>RC203421 ORF sequence Red=Cloning site Blue=ORF Green=Tags(s)

TTTTGTAATACGACTCACTATAGGGCGCCGGGAATTCGTCGACTGGATCCGGTACCGAGGAGATCTGCCGCCGCGATCGCC

ATGGGGAATGGGATGAACAAGATCCTGCCCGCCTGTACATCGGCAACTCAAAGATGCCAGAGACGCGG  
AACAAATTGAGCAAGAACAAGGTGACACATATTCTGTCTGTCCATGATAGTCCAGGCCTATGTTGGAGGG  
AGTTAAATACCTGTGCATCCCAGCAGCGGATTCACCATCTCAAAACCTGACAAGACATTTCAAAGAAAGT  
ATTAATTCATTACAGAGTGCCGGCTCCGCGGTGAGAGCTGCCTTGTACTGCTGGCCGGGTCTCCA  
GGAGCGTGACACTGGTGATCGCATACATCATGACCGTCACTGACTTTGGCTGGGAGGATGCCTGCACAC  
CGTGCGTGCTGGGAGATCCTGTGCCAACCCCAAGTGGGCTTCCAGAGACAGCTCCAGGAGTTTGAGAAG  
CATGAGGTCCATCAGTATCGGCAGTGGCTGAAGGAAGAATATGGAGAGAGCCCTTTGAGGATGCAGAAG  
AAGCAAAAACATTCTGGCCGCTCCAGGAATTCTGAAGTCTGGGCTTTCTCAGAAGACTG

ACGCGTACGCGGCCGCTCGAGCAGAACTCATCTCAGAAGAGGATCTGGCAGCAATGATATCCTGGATT  
ACAAGGATGACGACGATAAGGTTTAA

Protein Sequence:	>RC203421 protein sequence Red=Cloning site Green=Tags(s)
-------------------	--

MNGMNMKILPGLYIGNFKDARDAEQLSKNKVTHILSVHDSARPMLEGVKYL CIPAADSPSQNLTRHFKEK  
IKFIHECRLRGESCLVHCLAGVSRSVTLVIAYIMTVDFGWEDALHTVRAGRSCANPNVGFQRQLQEFEK  
HEVHQYRQWLKEEYGESPLQDAEEAKNILAAPGILKFWAFLRRL

TRTRPLEQKLI SEEDLAANDILDYKDDDDKV

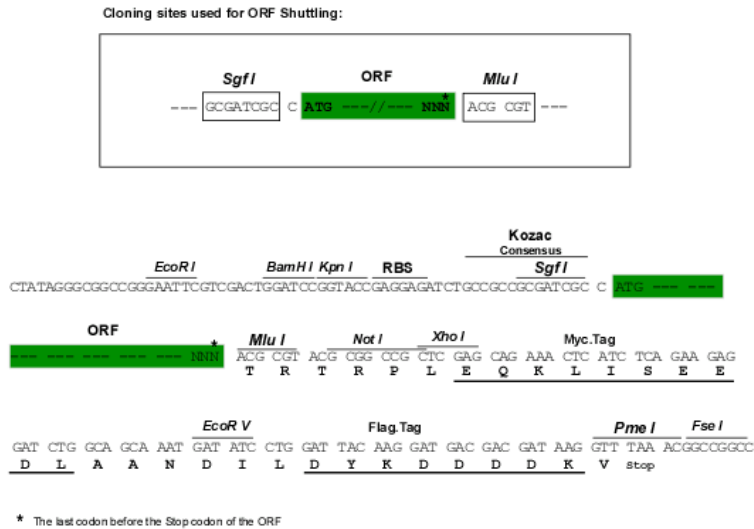
Chromatograms:	<a href="https://cdn.origene.com/chromatograms/mk6065_e12.zip">https://cdn.origene.com/chromatograms/mk6065_e12.zip</a>
----------------	---



[View online »](#)

Restriction Sites: SgfI-MluI

Cloning Scheme:



ACCN: NM\_020185

ORF Size: 552 bp

OTI Disclaimer: The molecular sequence of this clone aligns with the gene accession number as a point of reference only. However, individual transcript sequences of the same gene can differ through naturally occurring variations (e.g. polymorphisms), each with its own valid existence. This clone is substantially in agreement with the reference, but a complete review of all prevailing variants is recommended prior to use. [More info](#)

OTI Annotation: This clone was engineered to express the complete ORF with an expression tag. Expression varies depending on the nature of the gene.

Components: The ORF clone is ion-exchange column purified and shipped in a 2D barcoded Matrix tube containing 10ug of transfection-ready, dried plasmid DNA (reconstitute with 100 ul of water).

Reconstitution Method:

1. Centrifuge at 5,000xg for 5min.
2. Carefully open the tube and add 100ul of sterile water to dissolve the DNA.
3. Close the tube and incubate for 10 minutes at room temperature.
4. Briefly vortex the tube and then do a quick spin (less than 5000xg) to concentrate the liquid at the bottom.
5. Store the suspended plasmid at -20°C. The DNA is stable for at least one year from date of shipping when stored at -20°C.

RefSeq: [NM\\_020185.3](#), [NP\\_064570.1](#)

RefSeq Size: 1538 bp

RefSeq ORF: 555 bp

Locus ID: 56940

UniProt ID: [Q9NRW4](#)

**Cytogenetics:** 6p25.3

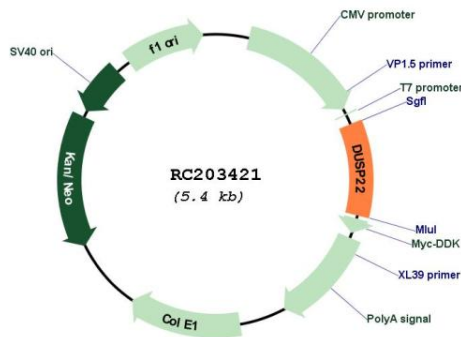
**Domains:** DSPc

**Protein Families:** Druggable Genome, Phosphatase

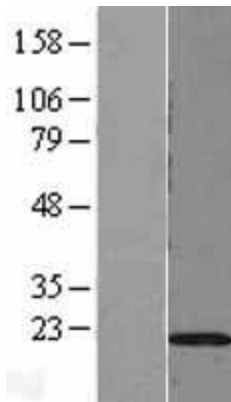
**MW:** 20.9 kDa

**Gene Summary:** Activates the Jnk signaling pathway. Dephosphorylates and deactivates p38 and stress-activated protein kinase/c-Jun N-terminal kinase (SAPK/JNK) (By similarity).[UniProtKB/Swiss-Prot Function]

**Product images:**



Circular map for RC203421



Western blot validation of overexpression lysate (Cat# [LY402758]) using anti-DDK antibody (Cat# [TA50011-100]). Left: Cell lysates from untransfected HEK293T cells; Right: Cell lysates from HEK293T cells transfected with RC203421 using transfection reagent MegaTran 2.0 (Cat# [TT210002]).